



SUNCOAST WINDOWS

HARDWARE RANGE



ESSENTIAL



SIGNATURE



COMMERCIAL





SUNCOAST WINDOWS

CONTENTS

WINDOW HARDWARE RANGE	3
DOOR HARDWARE RANGE	11
HARDWARE CARE & MAINTENANCE	20

Note: Key-locking versions are shown in this catalogue. Non key-locking versions are also available in some products. Talk to a Suncoast windows's sales representative for more information.

HARDWARE RANGE

The importance of hardware can be overlooked when considering all aspects of windows and doors. At Bradnam's we understand that hardware can have a dramatic effect on the overall design and functionality of windows and doors.

As such, our windows and doors are complemented by an extensive range of stylish and innovative hardware options. Whether you are a renovator, homeowner, builder or designer, our hardware range provides flexibility to help with your design concept.



SUNCOAST WINDOWS

WINDOW HARDWARE RANGE

SLIDING WINDOWS

DOUBLE HUNG WINDOWS

AWNING WINDOWS

BI-FOLD WINDOWS

CASEMENT WINDOWS

LOUVRE WINDOWS

Trim Concept Homes

SLIDING WINDOWS

ESSENTIAL



Lever conveniently
locks the window
without a key

SIGNATURE



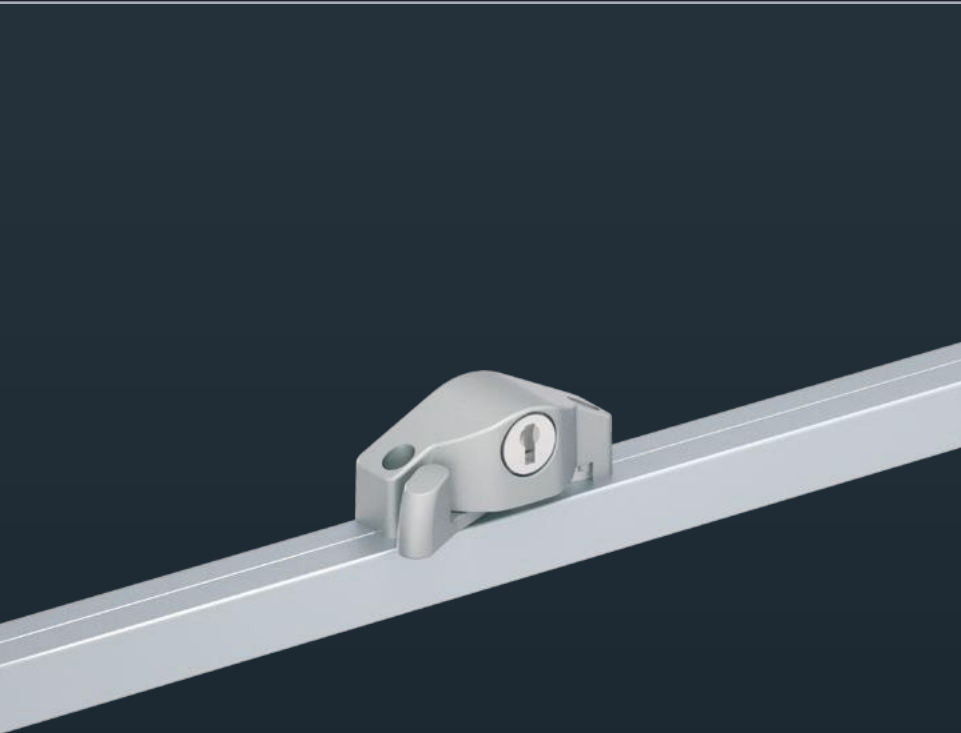
Mortice lock for improved security



DOUBLE HUNG WINDOWS

ESSENTIAL

SIGNATURE



Sash lift handle for
easy operation of sashes

Convenient locking indicator



Unlocked



Locked

AWNING WINDOWS

ESSENTIAL

SIGNATURE

COMMERCIAL

Handles can be folded to minimise interference with window furnishings

Single chain winder

Twin chain winder

Single chain winder

Twin chain winder

Optional sash catch for improved weather proofing

BI-FOLD WINDOWS

SIGNATURE

COMMERCIAL

Signature pull handle

Commercial pull handle

Flush bolt lever

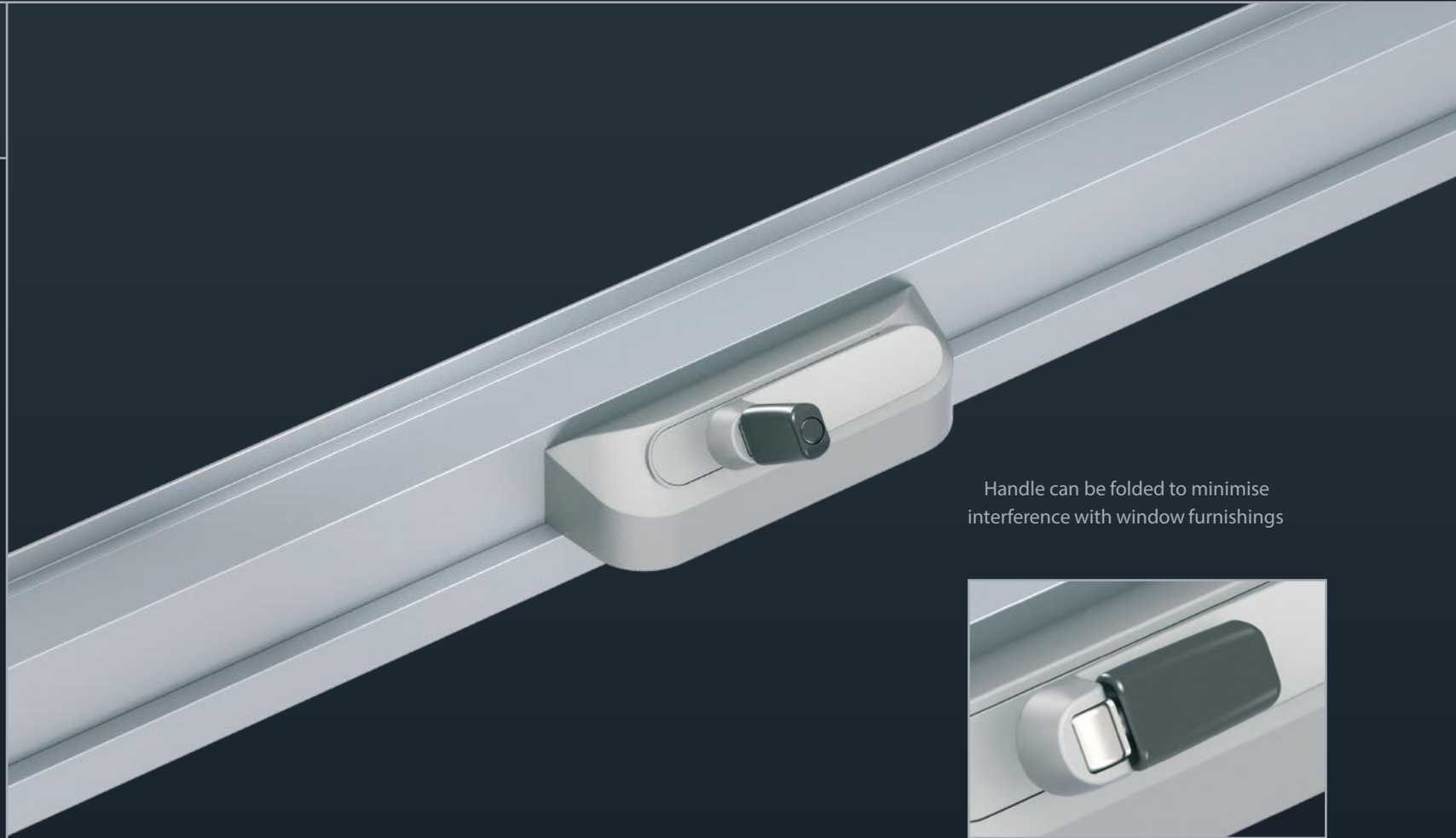
Twin bolt lever



CASEMENT WINDOWS

SIGNATURE LB

Lever & key operated
locking system



Handle can be folded to minimise
interference with window furnishings



LOUVRE WINDOWS

ESSENTIAL

SIGNATURE

SIGNATURE



	Black Matt	Black Gloss	White	Ultra Silver	Designer Silver	Stainless Steel Finish
SLIDING WINDOWS						
Essential	•	•	•	•	•	
Signature		•	•	•	•	
DOUBLE HUNG WINDOWS						
Essential		•	•	•	•	
Signature		•	•	•	•	
AWNING WINDOWS						
Essential		•	•	•	•	
Signature		•	•	•	•	
Commercial		•	•	•	•	
CASEMENT WINDOWS						
Essential		•	•	•	•	•
Signature		•	•	•	•	•
Signature LB		•	•	•	•	
BI-FOLD WINDOWS						
Signature		•	•	•	•	
Commercial	•					•

	Black Matt	White	Grey Satin	Surfmist	White Birch	Stone Beige	Woodland Grey
LOUVRE WINDOWS							
Signature	•	•	•	•	•	•	•

Note: Stainless Steel Finish can either be stainless steel substrate or representative plated finish.

The hardware displayed in this catalogue are a guide only, and due to the nature of printing processes, some degree of colour and gloss level variations may occur. Suncoast's Windows & Doors recommend the viewing of an actual hardware product before order.



McLachlan Homes



SUNCOAST WINDOWS

DOOR HARDWARE RANGE

SLIDING DOORS

BI-FOLD DOORS

PIVOT DOORS

HINGED DOORS

Comdain Homes

SLIDING DOORS

ESSENTIAL

SIGNATURE

COMMERCIAL

Standard internal handle

Standard external handle

Lever
conveniently
locks the door
without a key

Mortice lock for improved security

Adequate clearance
to operate the key

26mm

SIGNATURE

COMMERCIAL

External low profile handle

Internal view

Square-form
handle

External view



BI-FOLD DOORS

SIGNATURE

COMMERCIAL

Locking lever



PIVOT & HINGED DOORS

COMMERCIAL

Signature pull handle

Commercial pull handle

External key pad

Internal turn knob



PIVOT & HINGED DOORS

COMMERCIAL

Lever handle



'D' handles



PIVOT & HINGED DOORS

COMMERCIAL

Square-form handles

Curved handle



HINGED DOORS

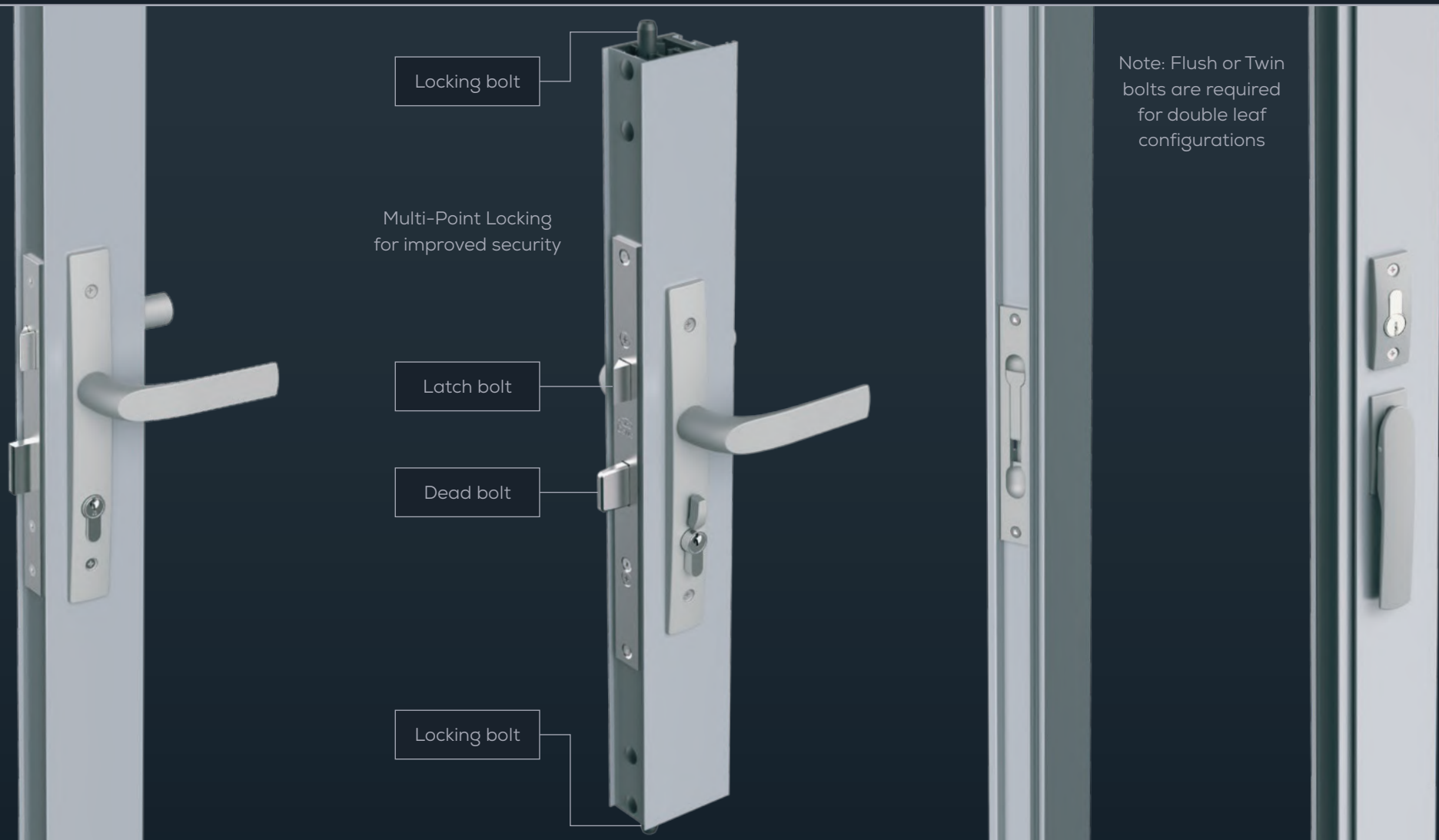
ESSENTIAL

SIGNATURE

COMMERCIAL

Flush bolt

Twin bolt



	Black Matt	Black Gloss	White	Ultra Silver	Designer Silver	Stainless Steel Finish
SLIDING DOORS						
Essential	•	•	•	•	•	
Signature		•	•	•	•	
Commercial		•	•	•	•	•
HINGED DOORS						
Essential		•	•	•	•	•
Signature		•	•	•	•	•
Commercial		•	•	•	•	•
PIVOT & HINGED DOORS						
Commercial						•
BI-FOLD DOORS						
Signature		•	•	•	•	
Commercial	•					•

Note: Stainless Steel Finish can either be stainless steel substrate or representative plated finish

The hardware displayed in this catalogue are a guide only, and due to the nature of printing processes, some degree of colour and gloss level variations may occur. Suncoast's Windows & Doors recommend the viewing of an actual hardware product before order.



HARDWARE CARE & MAINTENANCE

General periodic maintenance and care are required on all hardware to ensure that they function correctly and maintain their appearance. The external finish of hardware must be kept clean by removing any harmful residue (especially salt spray) from the surface.

Cleaning should be undertaken with a small amount of mild detergent in warm water. A soft brush or cloth free of grit or buttons should be used. Any form of abrasive cleaner or household cleaners should not be used under any circumstances.

After cleaning it is essential that the hardware is wiped down with fresh water to remove any detergent residue.

Internal mechanisms of locks, catches, etc. should be kept in good working order by applying a light spray of lubricant (WD40, RP7 or similar). Care should be taken during maintenance of internal mechanisms that any finished surface is well protected to avoid damage.

Recommended Care & Maintenance Intervals

Type of environment	Definition of environment	Maximum maintenance intervals
Mild	Being rural, away from the coast and remote industry and urban activity	6 months
Moderate	Being mainly urban, inland and away from heavy industrial activity	3 months
Tropical / Severe	Being coastal/marine, subject to salt deposition and within 15km of the eastern coast or 10km of the western coast of Australia	2-4 weeks

For more information call Suncoast windows on

07 54915244

WINDOWS & DOORS

INSECT & SAFETY SCREENS

SHOWER SCREENS

MIRRORS & WARDROBES

SPLASHBACKS & SHELVING



Australian Owned & Made

Bradnam's products are proudly made in Australia and designed specifically to meet all Australian conditions.

Hardware availability, features, options, sizes, configurations and performance are subject to regional variations, design requirements and building codes.

Images are for illustration purposes only and may not accurately represent the product. Suncoast windows Windows & Doors reserves the right to change, alter or delete any aspect of the hardware range without notice.