

# Commercial Bi-fold Window & Door (100mm)

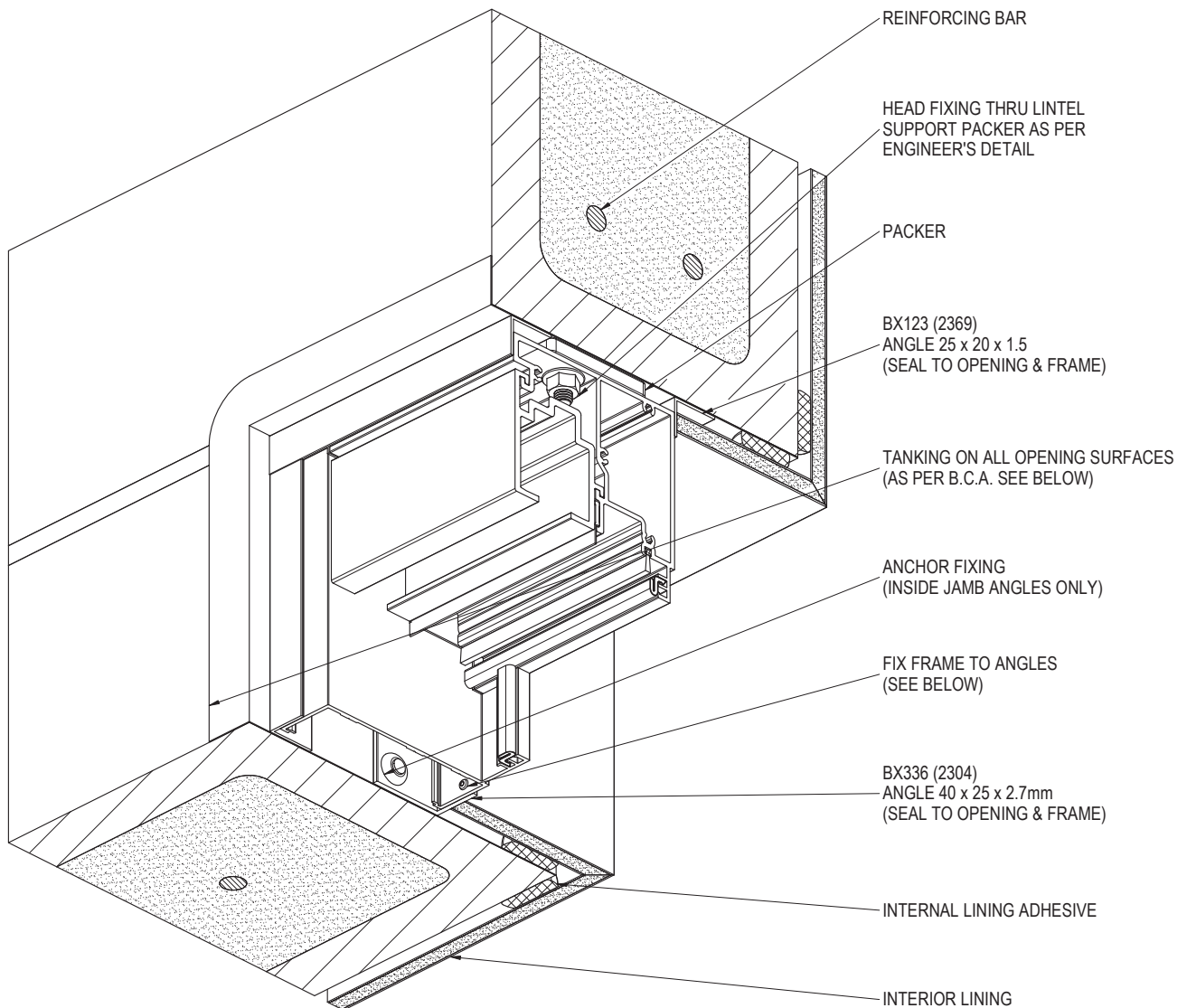
## Installation Details



SUNCOAST  
WINDOWS

Quality . Style . Innovation

## TYPICAL BLOCKWORK CONSTRUCTION - HEAD DETAIL



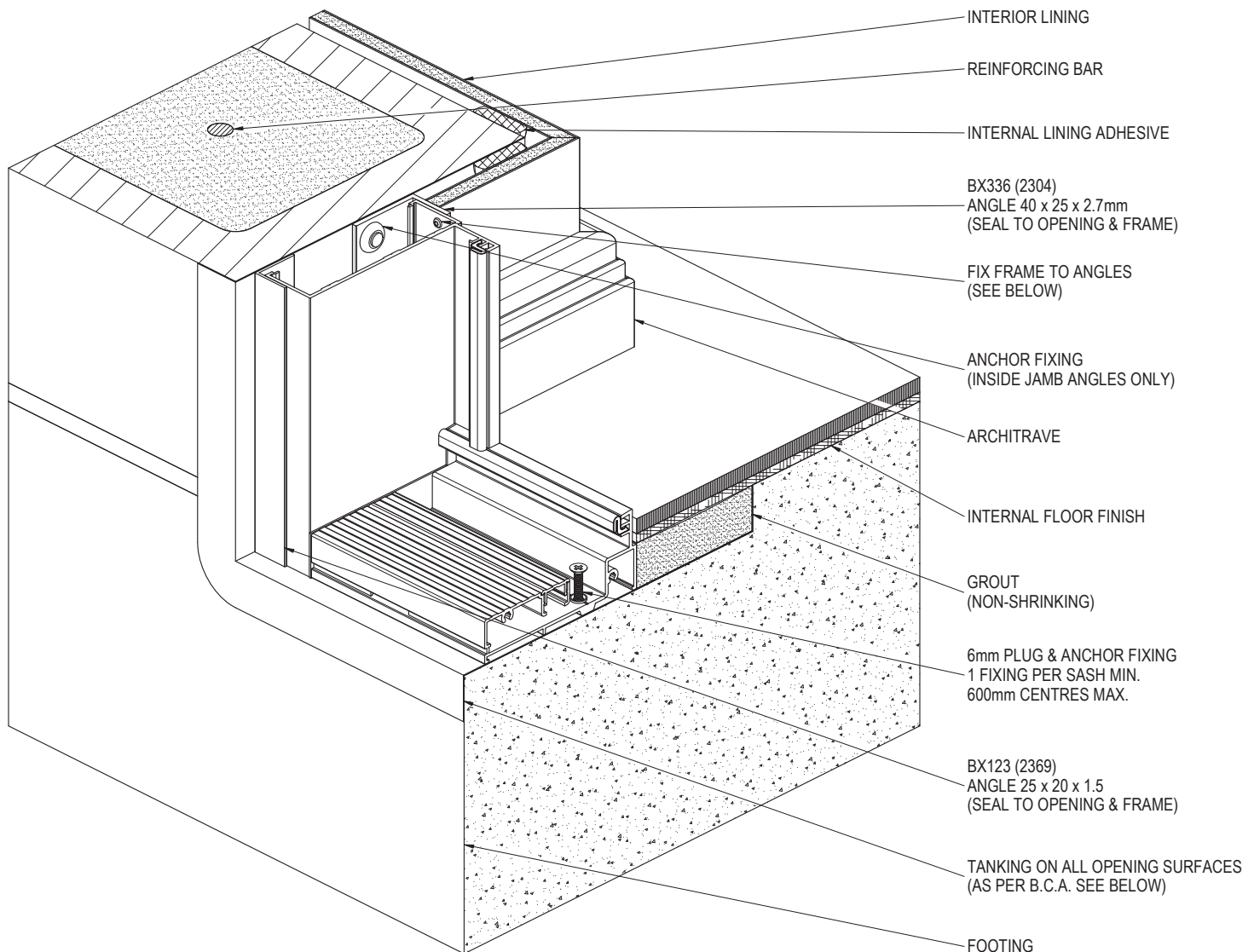
NOTE:  
SURFACE OF BLOCKS TO DOOR OPENING MUST BE TANKED WITH A SUITABLE SEALER TO PREVENT INGRESS OF MOISTURE. ENSURE SURFACES TO BE SEALED ARE SOUND, CLEAN, DRY AND FREE FROM ANY CONTAMINANTS BEFORE SEALING AS ATTAINED IN THE N.C.C. WATERPROOFING SECTION.

FOR SITE CLASSIFICATIONS OF UP TO AND INCLUDING 'N6' OR SIMILAR, FIXINGS ARE TO BE AT 450mm CENTRE MAXIMUM, FOR SITUATIONS IN EXCESS OF THIS THE FIXINGS ARE TO BE AT 300mm CENTRES MAXIMUM. FIXING SIZE TO BE AS PER ENGINEER'S DETAILS.

PRODUCT NO: COM 100 BD  
DRAWING NO: COM-BD-02-01  
DRAWN: DJH

DATE: 07/01/14  
ISSUE: B  
SCALE: 1 : 3

## TYPICAL BLOCKWORK CONSTRUCTION - SILL DETAIL



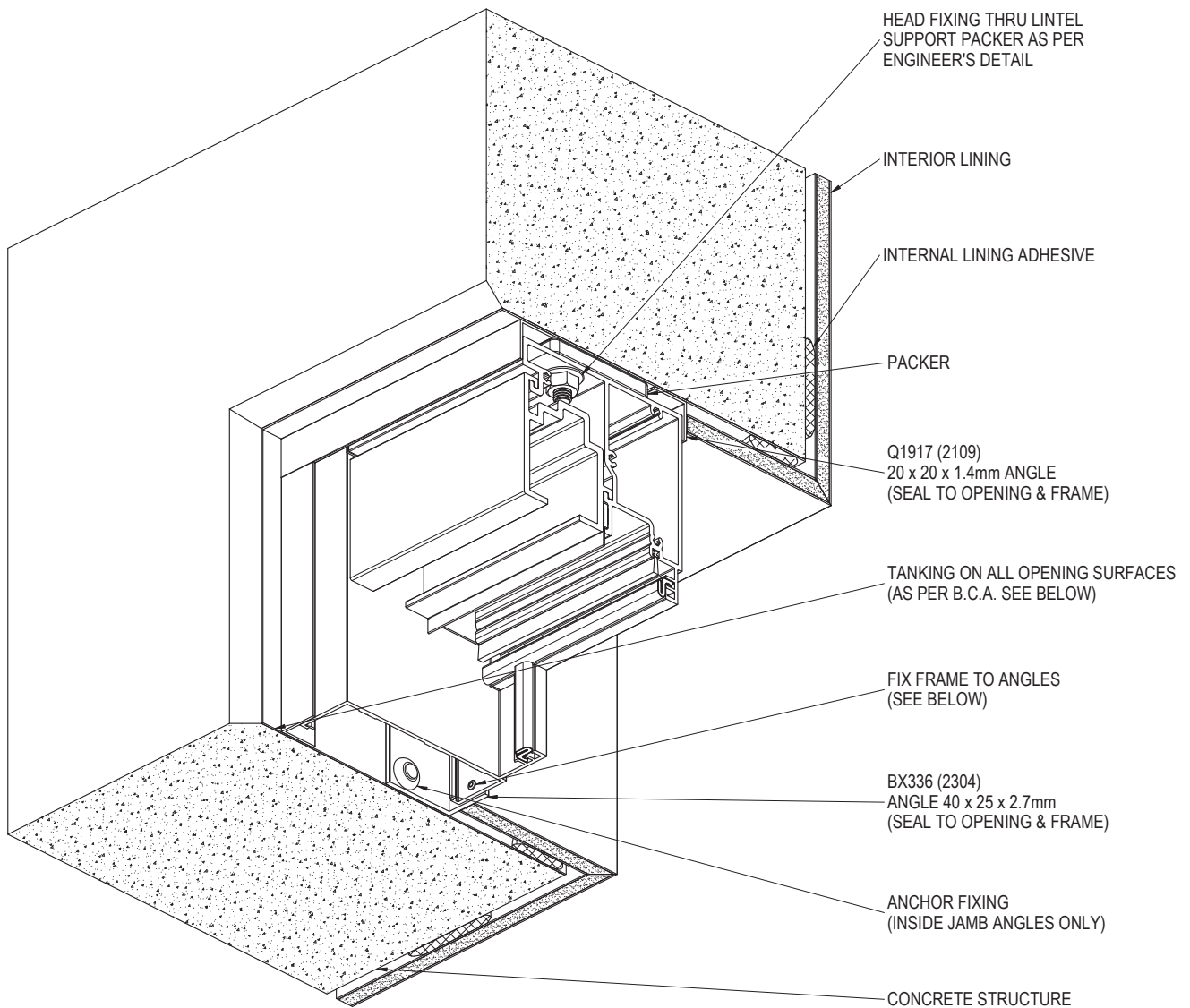
NOTE:  
SURFACE OF BLOCKS TO DOOR OPENING MUST BE TANKED WITH A SUITABLE SEALER TO PREVENT INGRESS OF MOISTURE. ENSURE SURFACES TO BE SEALED ARE SOUND, CLEAN, DRY AND FREE FROM ANY CONTAMINANTS BEFORE SEALING AS ATTAINED IN THE N.C.C. WATERPROOFING SECTION.

FOR SITE CLASSIFICATIONS OF UP TO AND INCLUDING 'N6' OR SIMILAR, FIXINGS ARE TO BE AT 450mm CENTRE MAXIMUM, FOR SITUATIONS IN EXCESS OF THIS THE FIXINGS ARE TO BE AT 300mm CENTRES MAXIMUM. FIXING SIZE TO BE AS PER ENGINEER'S DETAILS.

PRODUCT NO: COM 100 BD  
DRAWING NO: COM-BD-02-02  
DRAWN: DJH

DATE: 07/01/14  
ISSUE: B  
SCALE: 1 : 3

## TYPICAL CONCRETE CONSTRUCTION - HEAD DETAIL



**NOTE:**

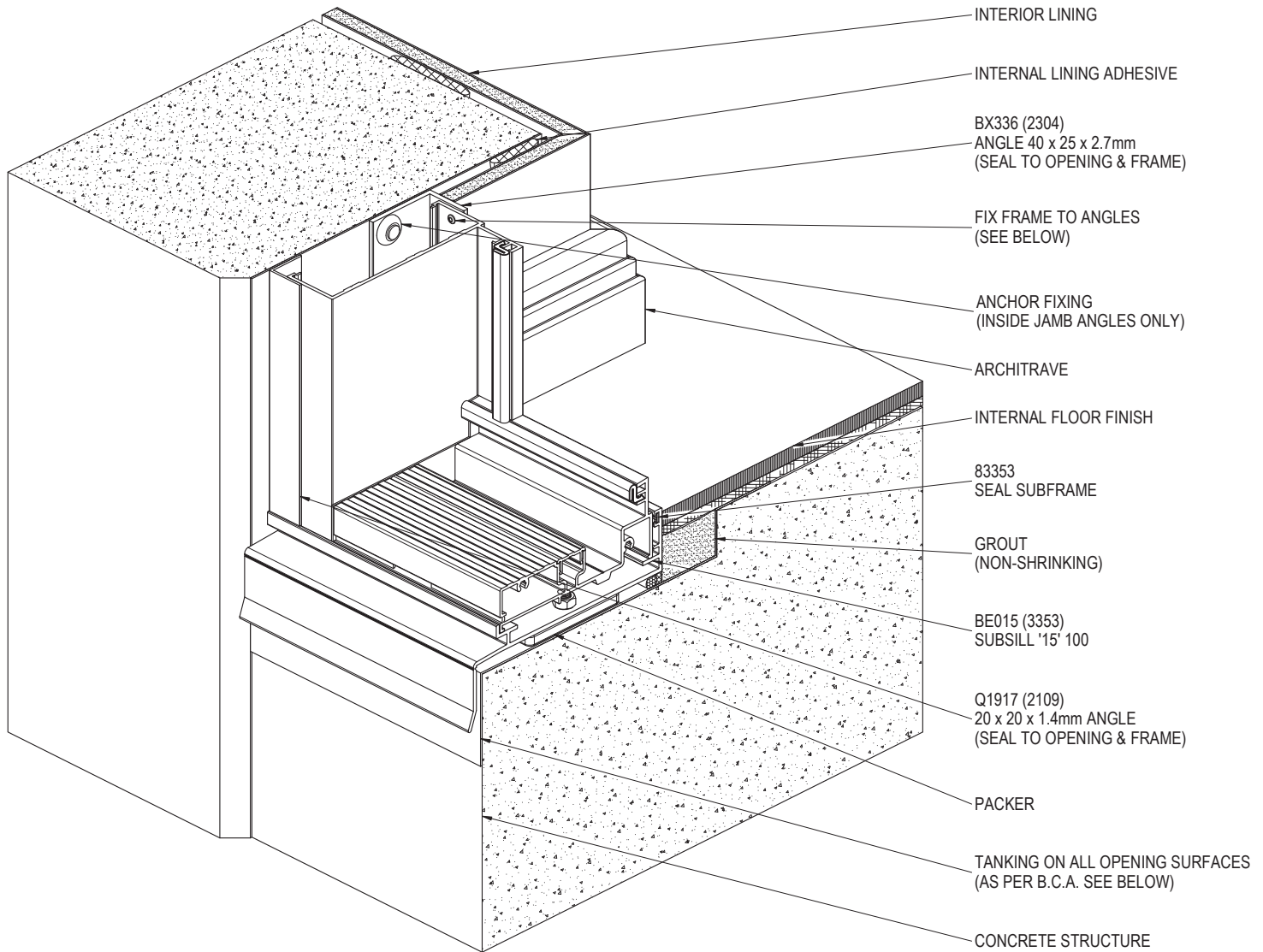
SURFACE OF CONCRETE TO DOOR OPENING MUST BE TANKED WITH A SUITABLE SEALER TO PREVENT INGRESS OF MOISTURE. ENSURE SURFACES TO BE SEALED ARE SOUND, CLEAN, DRY AND FREE FROM ANY CONTAMINANTS BEFORE SEALING AS ATTAINED IN THE N.C.C. WATERPROOFING SECTION.

FOR SITE CLASSIFICATIONS OF UP TO AND INCLUDING 'N6' OR SIMILAR, FIXINGS ARE TO BE AT 450mm CENTRE MAXIMUM, FOR SITUATIONS IN EXCESS OF THIS THE FIXINGS ARE TO BE AT 300mm CENTRES MAXIMUM. FIXING SIZE TO BE AS PER ENGINEER'S DETAILS.

PRODUCT NO: COM 100 BD  
DRAWING NO: COM-BD-02-03  
DRAWN: DJH

DATE: 07/01/14  
ISSUE: B  
SCALE: 1 : 3

## TYPICAL CONCRETE CONSTRUCTION - SILL DETAIL



**NOTE:**

SURFACE OF CONCRETE TO DOOR OPENING MUST BE TANKED WITH A SUITABLE SEALER TO PREVENT INGRESS OF MOISTURE. ENSURE SURFACES TO BE SEALED ARE SOUND, CLEAN, DRY AND FREE FROM ANY CONTAMINANTS BEFORE SEALING AS ATTAINED IN THE N.C.C. WATERPROOFING SECTION.

FOR SITE CLASSIFICATIONS OF UP TO AND INCLUDING 'N6' OR SIMILAR, FIXINGS ARE TO BE AT 450mm CENTRE MAXIMUM, FOR SITUATIONS IN EXCESS OF THIS THE FIXINGS ARE TO BE AT 300mm CENTRES MAXIMUM. FIXING SIZE TO BE AS PER ENGINEER'S DETAILS.

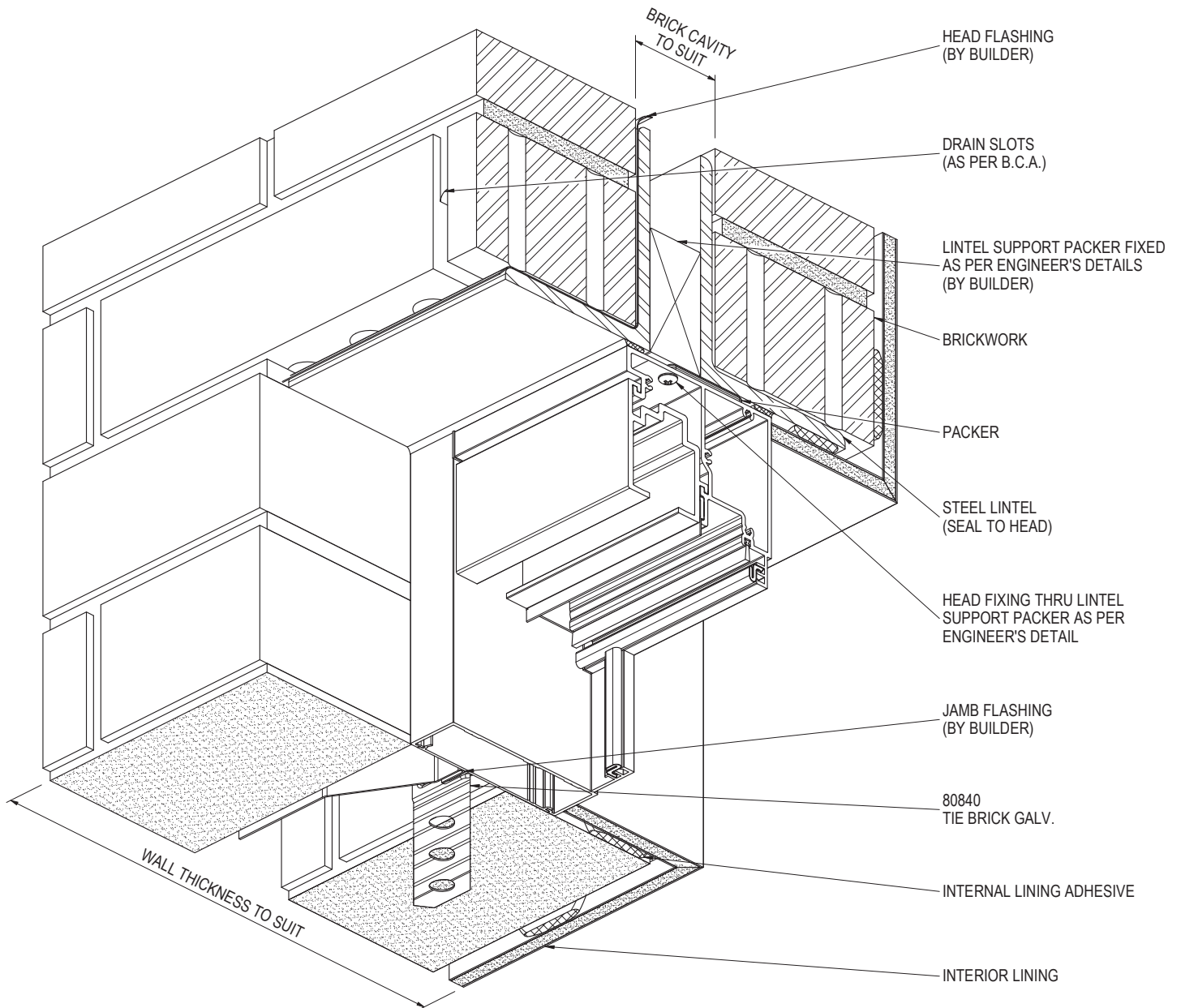
PRODUCT NO: COM 100 BD  
DRAWING NO: COM-BD-02-04  
DRAWN: DJH

DATE: 07/01/14  
ISSUE: B  
SCALE: 1 : 3



**SUNCOAST  
WINDOWS**  
Quality . Style . Innovation

## TYPICAL CAVITY BRICK CONSTRUCTION - HEAD DETAIL



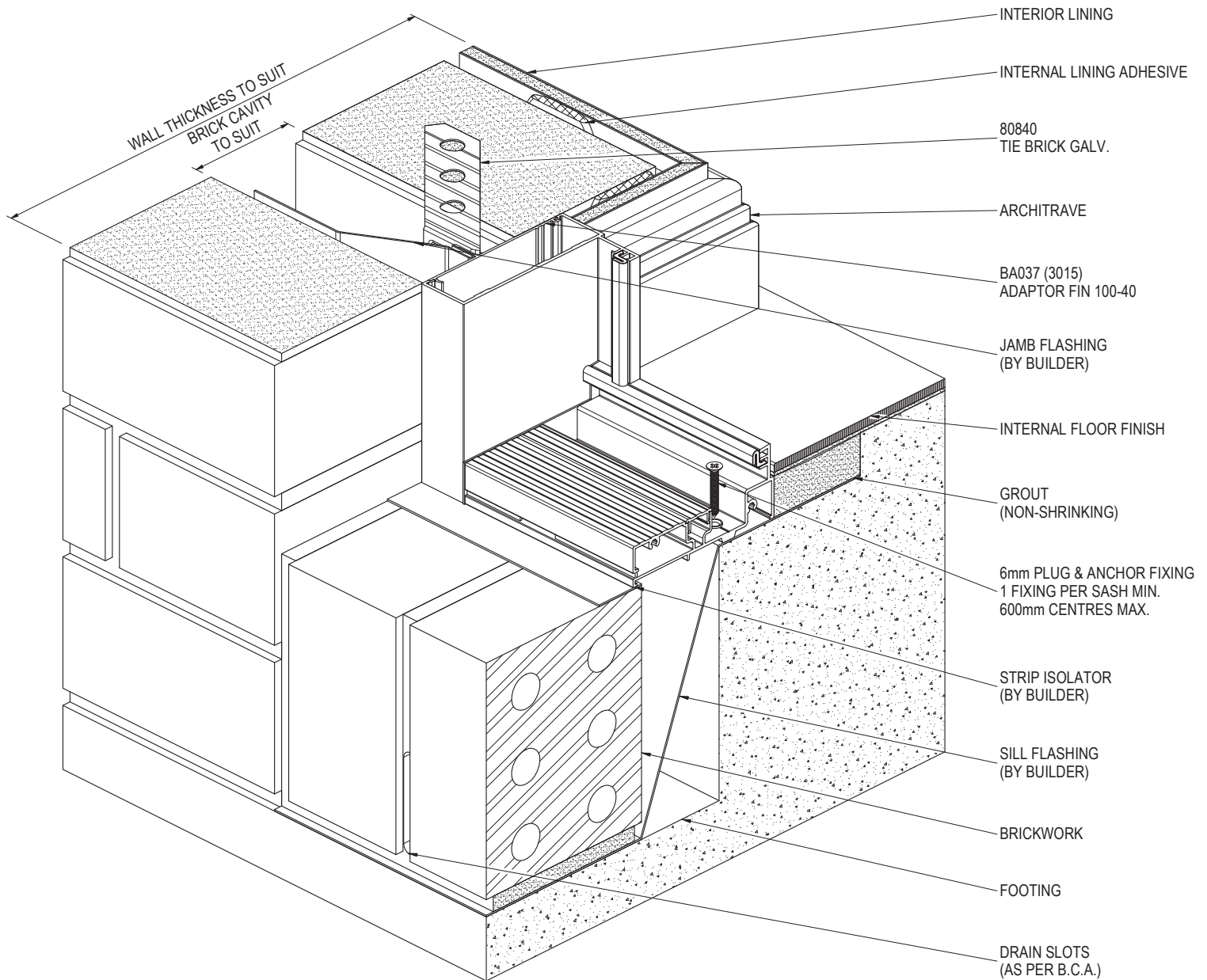
NOTE:  
FOR SITE CLASSIFICATIONS OF UP TO AND INCLUDING 'N6' OR SIMILAR, FIXINGS ARE TO BE AT 450mm CENTRE MAXIMUM, FOR SITUATIONS IN EXCESS OF THIS THE FIXINGS ARE TO BE AT 300mm CENTRES MAXIMUM. FIXING SIZE TO BE AS PER ENGINEER'S DETAILS.

PRODUCT NO: COM 100 BD  
DRAWING NO: COM-BD-02-05  
DRAWN: DJH

DATE: 07/01/14  
ISSUE: B  
SCALE: 1 : 3



## TYPICAL CAVITY BRICK CONSTRUCTION - SILL DETAIL

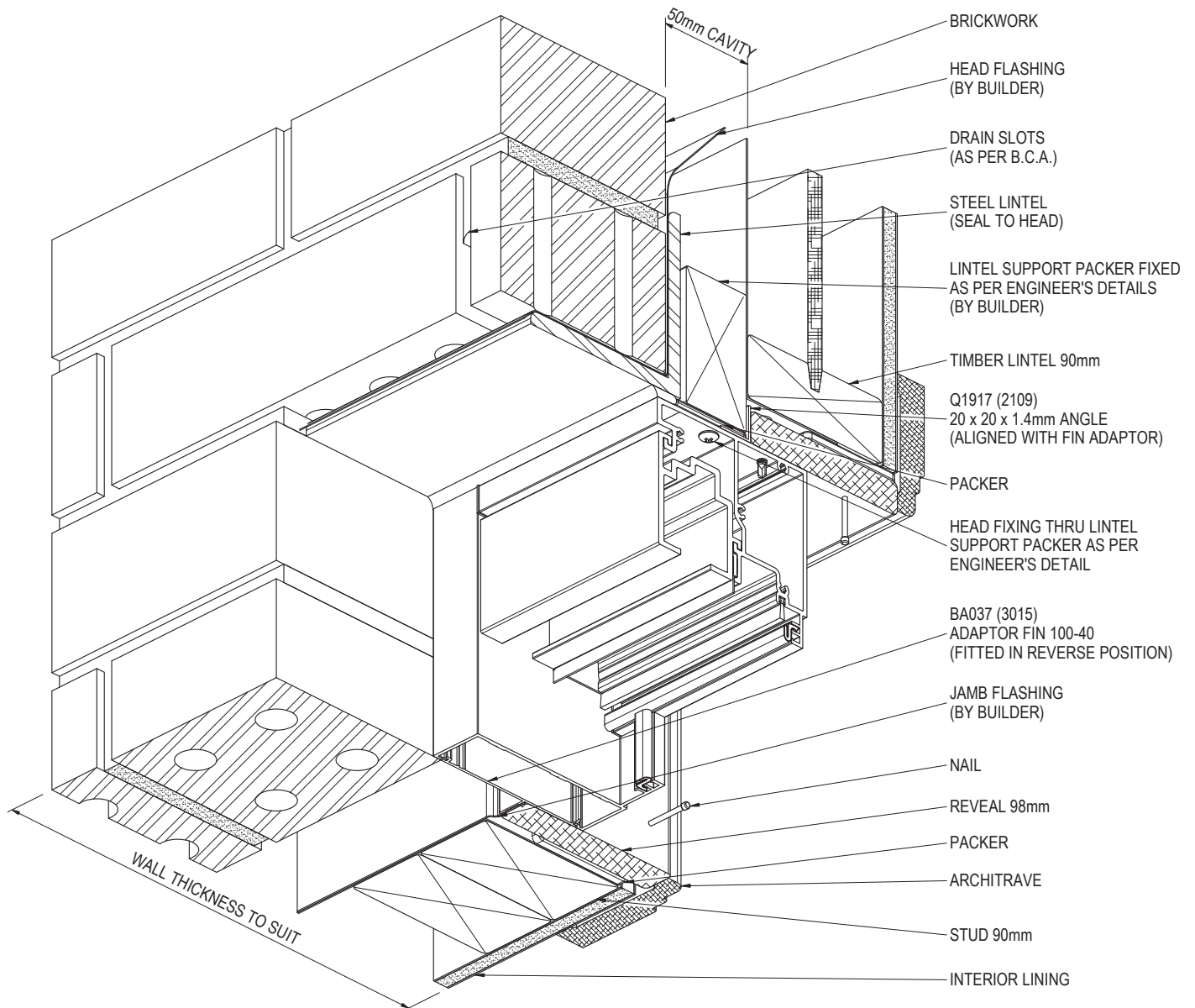


NOTE:  
FOR SITE CLASSIFICATIONS OF UP TO AND INCLUDING 'N6' OR SIMILAR, FIXINGS ARE TO BE AT 450mm CENTRE MAXIMUM, FOR SITUATIONS IN EXCESS OF THIS THE FIXINGS ARE TO BE AT 300mm CENTRES MAXIMUM. FIXING SIZE TO BE AS PER ENGINEER'S DETAILS.

PRODUCT NO: COM 100 BD  
DRAWING NO: COM-BD-02-06  
DRAWN: DJH

DATE: 07/01/14  
ISSUE: B  
SCALE: 1 : 3

## TYPICAL BRICK VENEER CONSTRUCTION - HEAD DETAIL - OPEN OUT



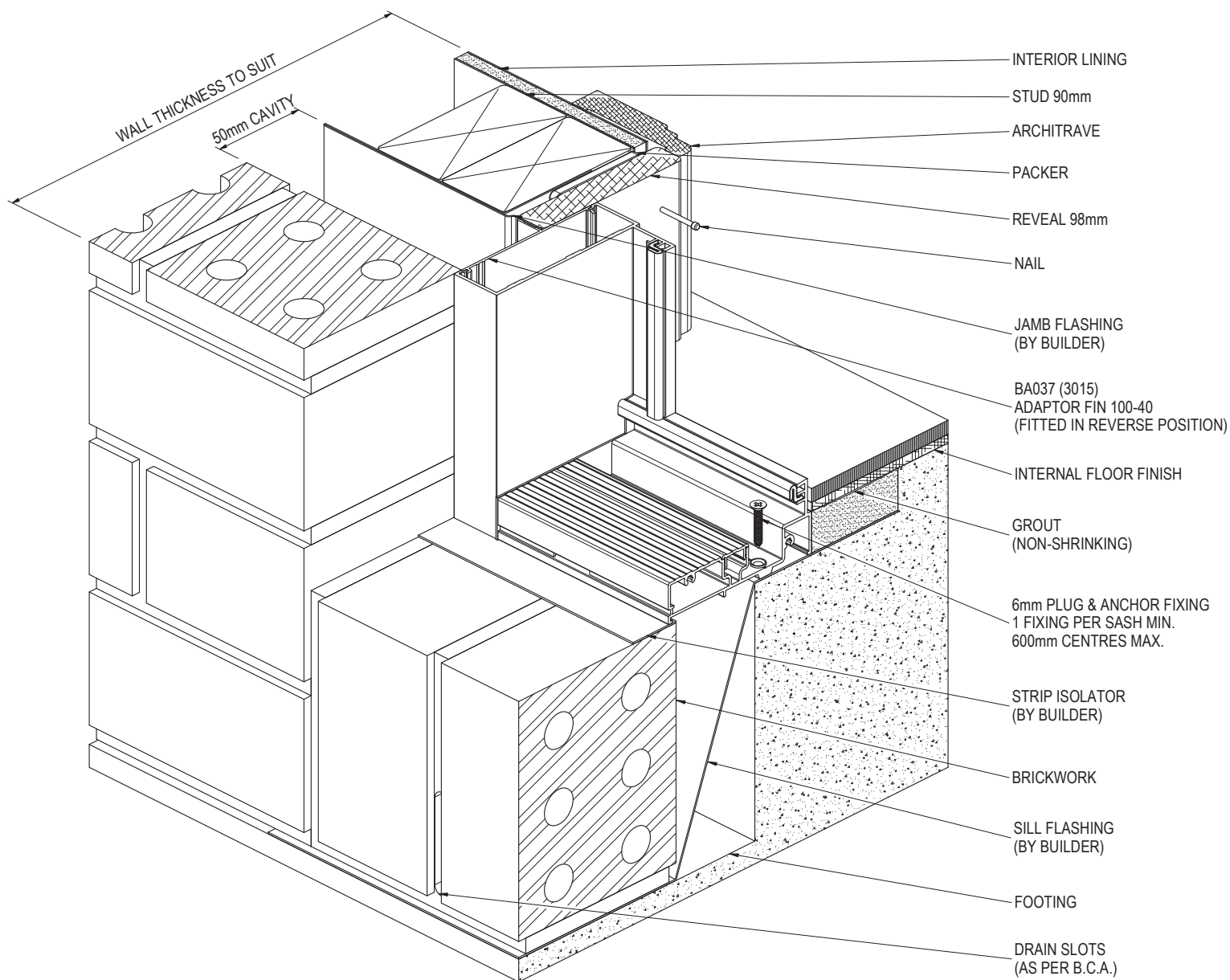
NOTE:  
FOR SITE CLASSIFICATIONS OF UP TO AND INCLUDING 'N6' OR SIMILAR, FIXINGS ARE TO BE AT 450mm CENTRE MAXIMUM, FOR SITUATIONS IN EXCESS OF THIS THE FIXINGS ARE TO BE AT 300mm CENTRES MAXIMUM. FIXING SIZE TO BE AS PER ENGINEER'S DETAILS.

PRODUCT NO: COM 100 BD  
DRAWING NO: COM-BD-02-07  
DRAWN: DJH

DATE: 07/05/14  
ISSUE: C  
SCALE: 1 : 3



## TYPICAL BRICK VENEER CONSTRUCTION - SILL DETAIL - OPEN OUT

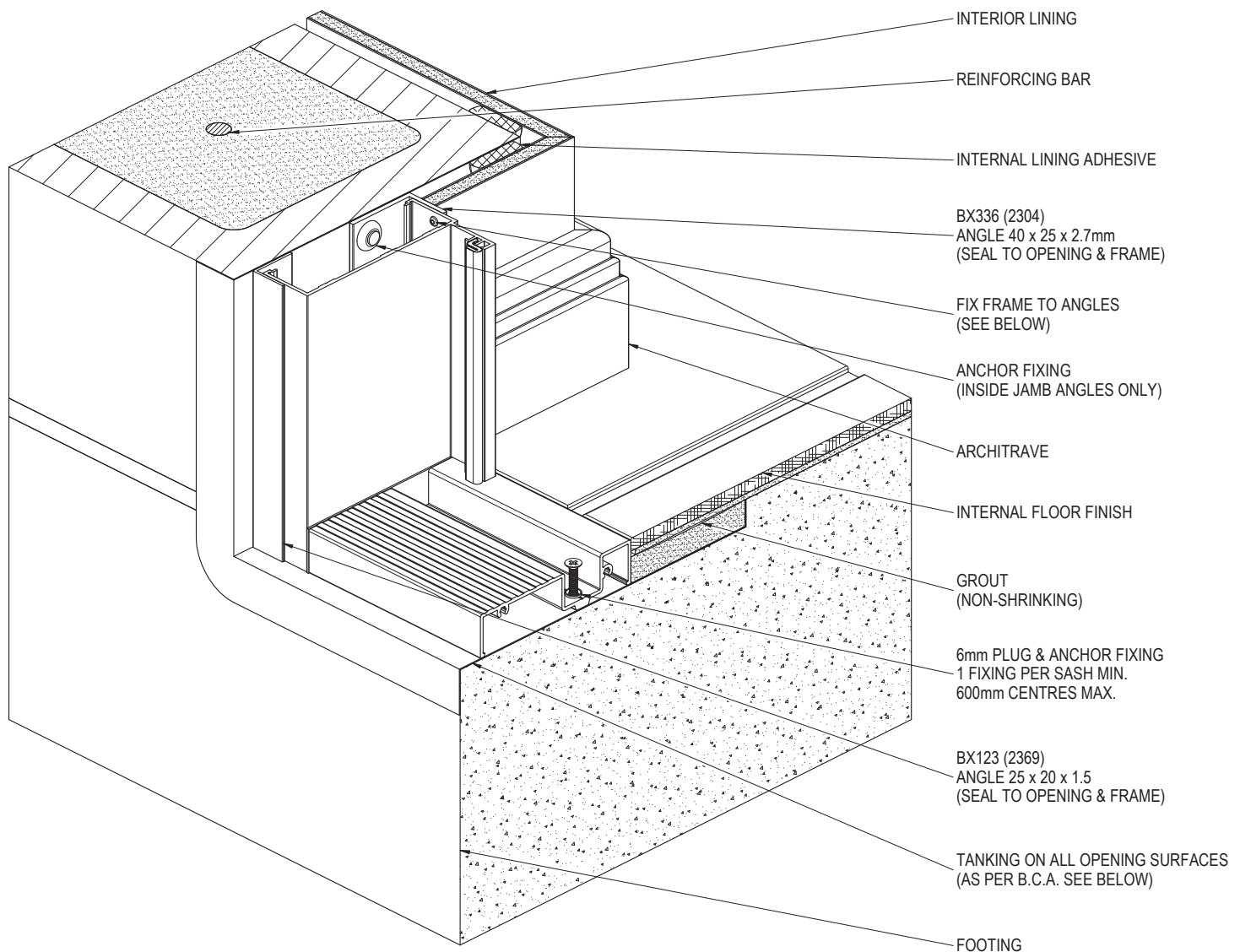


NOTE:  
FOR SITE CLASSIFICATIONS OF UP TO AND INCLUDING 'N6' OR SIMILAR, FIXINGS ARE TO BE AT 450mm CENTRE MAXIMUM, FOR SITUATIONS IN EXCESS OF THIS THE FIXINGS ARE TO BE AT 300mm CENTRES MAXIMUM. FIXING SIZE TO BE AS PER ENGINEER'S DETAILS.

PRODUCT NO: COM 100 BD  
DRAWING NO: COM-BD-02-08  
DRAWN: DJH

DATE: 07/05/14  
ISSUE: C  
SCALE: 1 : 3

## TYPICAL CONSTRUCTION USING BT022 (3516) SILL FLAT



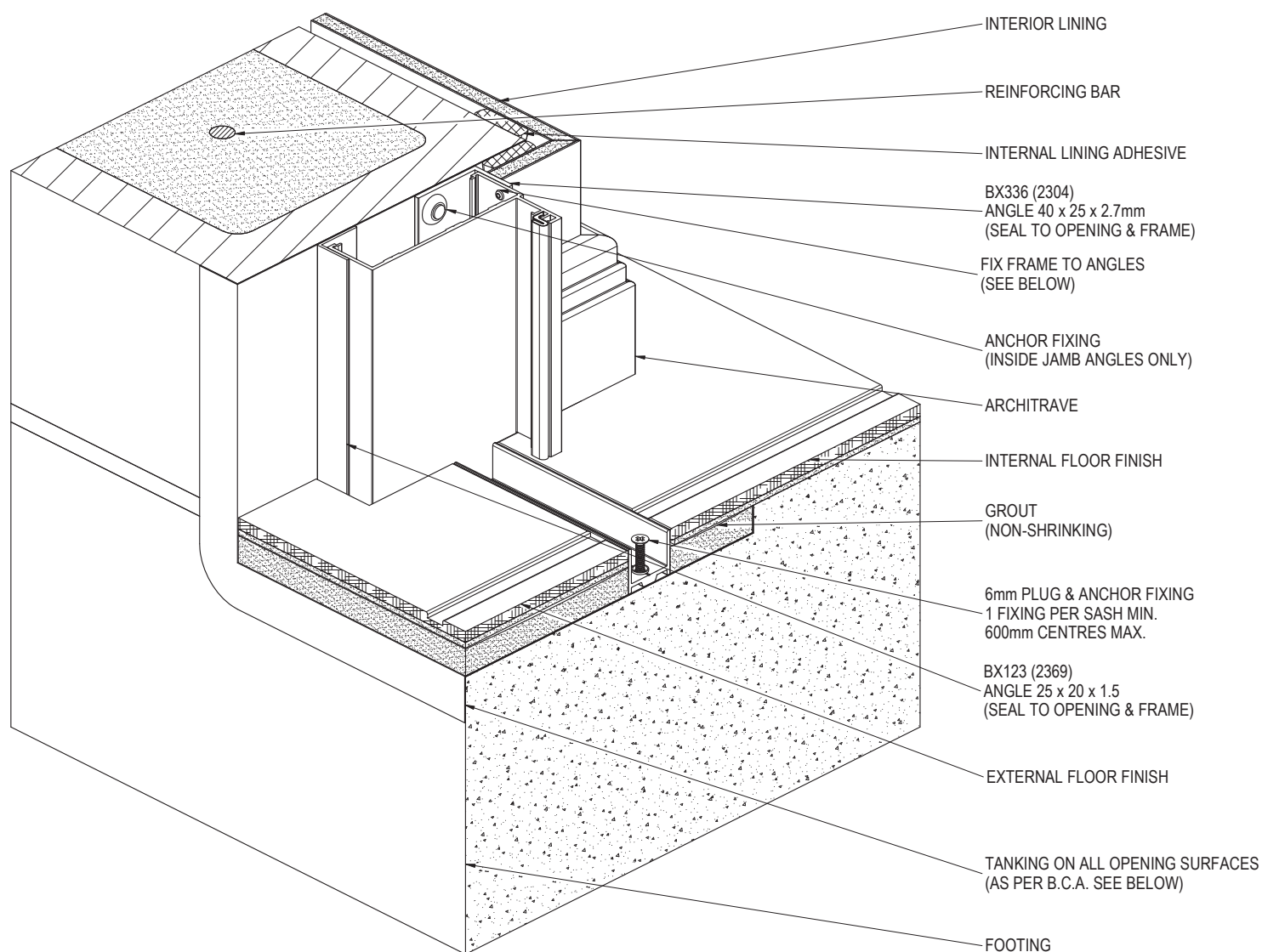
NOTE:  
SURFACE OF BLOCKS TO DOOR OPENING MUST BE TANKED WITH A SUITABLE SEALER TO PREVENT INGRESS OF MOISTURE. ENSURE SURFACES TO BE SEALED ARE SOUND, CLEAN, DRY AND FREE FROM ANY CONTAMINANTS BEFORE SEALING AS ATTAINED IN THE N.C.C. WATERPROOFING SECTION.

FOR SITE CLASSIFICATIONS OF UP TO AND INCLUDING 'N6' OR SIMILAR, FIXINGS ARE TO BE AT 450mm CENTRE MAXIMUM, FOR SITUATIONS IN EXCESS OF THIS THE FIXINGS ARE TO BE AT 300mm CENTRES MAXIMUM. FIXING SIZE TO BE AS PER ENGINEER'S DETAILS.

PRODUCT NO: COM 100 BD  
DRAWING NO: COM-BD-02-09  
DRAWN: DJH

DATE: 07/01/14  
ISSUE: B  
SCALE: 1 : 3

## TYPICAL CONSTRUCTION USING BT023 (3517) CHANNEL GUIDE SILL



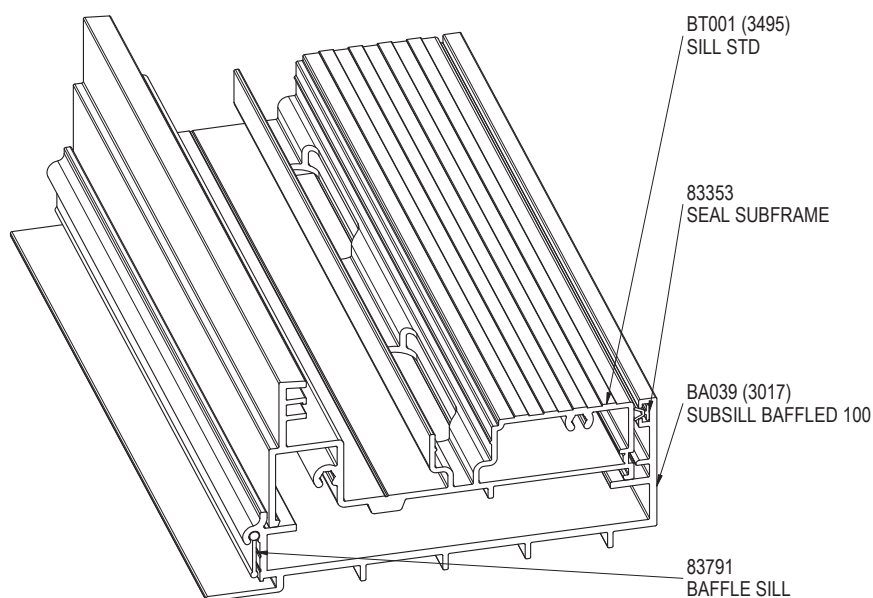
**NOTE:**  
SURFACE OF BLOCKS TO DOOR OPENING MUST BE TANKED WITH A SUITABLE SEALER TO PREVENT INGRESS OF MOISTURE. ENSURE SURFACES TO BE SEALED ARE SOUND, CLEAN, DRY AND FREE FROM ANY CONTAMINANTS BEFORE SEALING AS ATTAINED IN THE N.C.C. WATERPROOFING SECTION.

FOR SITE CLASSIFICATIONS OF UP TO AND INCLUDING 'N6' OR SIMILAR, FIXINGS ARE TO BE AT 450mm CENTRE MAXIMUM, FOR SITUATIONS IN EXCESS OF THIS THE FIXINGS ARE TO BE AT 300mm CENTRES MAXIMUM. FIXING SIZE TO BE AS PER ENGINEER'S DETAILS.

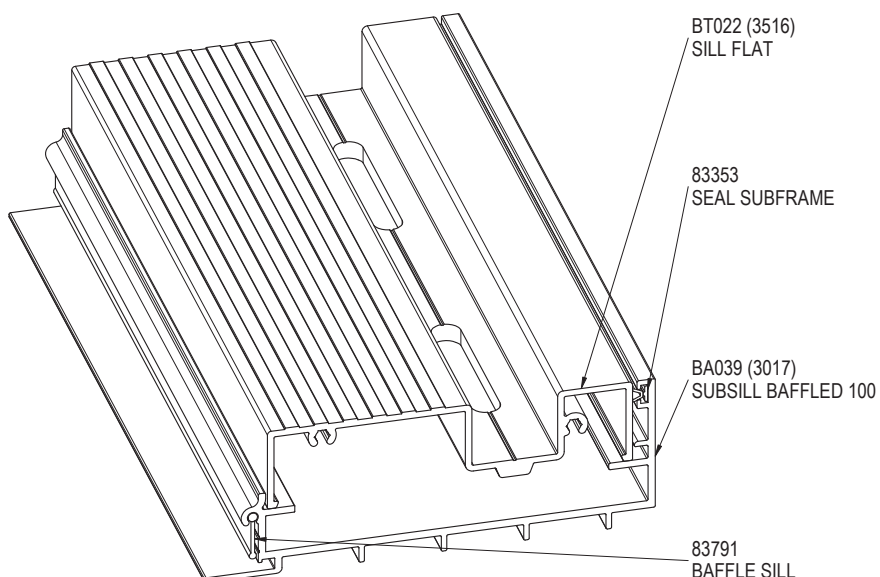
PRODUCT NO: COM 100 BD  
DRAWING NO: COM-BD-02-10  
DRAWN: DJH

DATE: 07/01/14  
ISSUE: B  
SCALE: 1 : 3

## SUBSILL DRAINAGE REGULATIONS



NOTE: IT IS MANDATORY THAT OPEN IN DOORS USING BT001 (3495) SILL STD USE BA039 (3017) SUBSILL BAFFLED 100, REFER TO COM-BD-06-30 FOR MACHINING DETAILS.



NOTE: IT IS RECOMMENDED THAT OPEN OUT & OPEN IN DOORS USING BT001 (3495) SILL STD USE BA039 (3017) SUBSILL BAFFLED 100, REFER TO COM-BD-06-31 FOR MACHINING DETAILS.

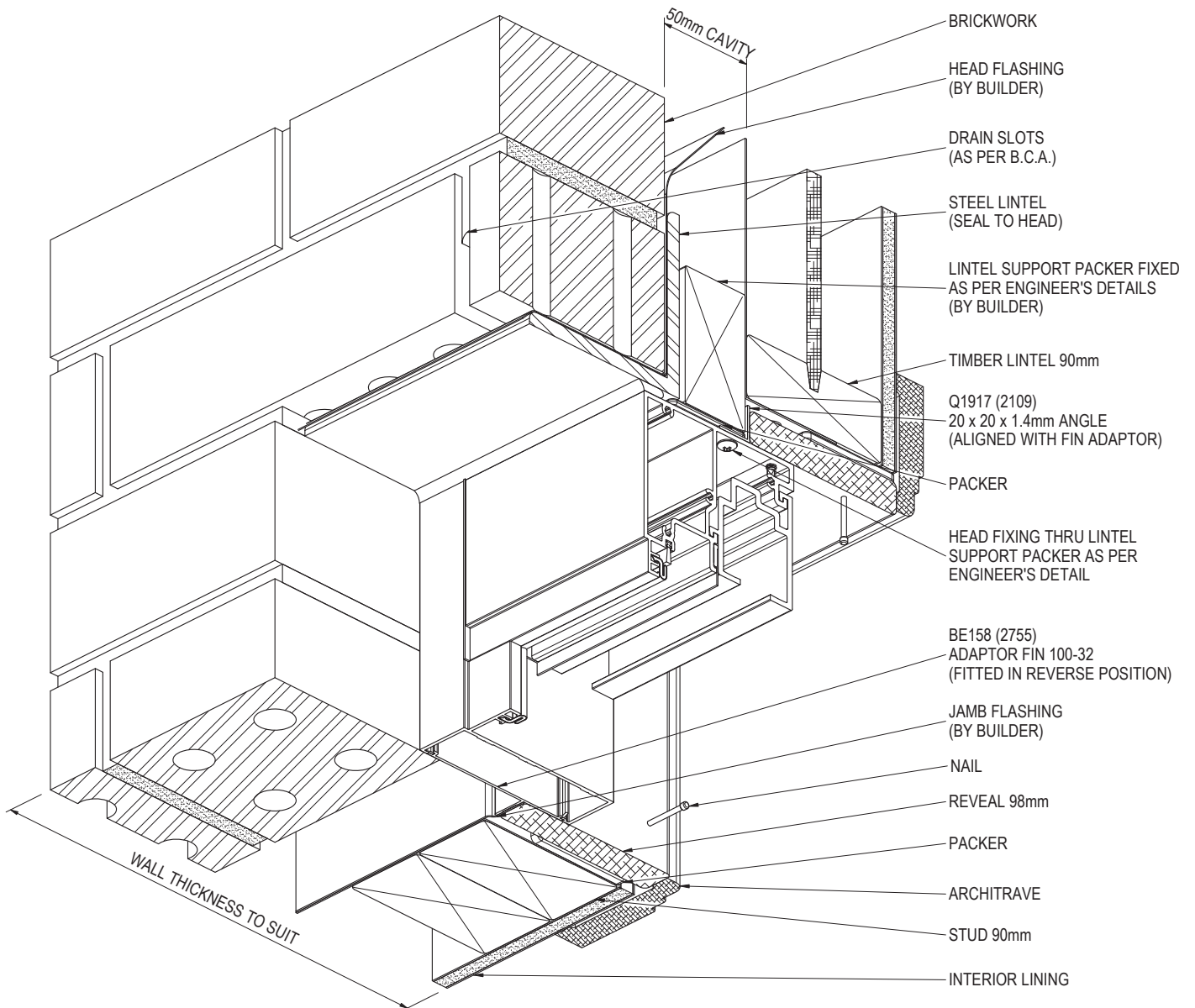
PRODUCT NO: COM 100 BD  
DRAWING NO: COM-BD-02-11  
DRAWN: DJH

DATE: 31/07/12  
ISSUE: A  
SCALE: 1 : 2



SUNCOAST  
WINDOWS  
Quality . Style . Innovation

## TYPICAL BRICK VENEER CONSTRUCTION - HEAD DETAIL - OPEN IN

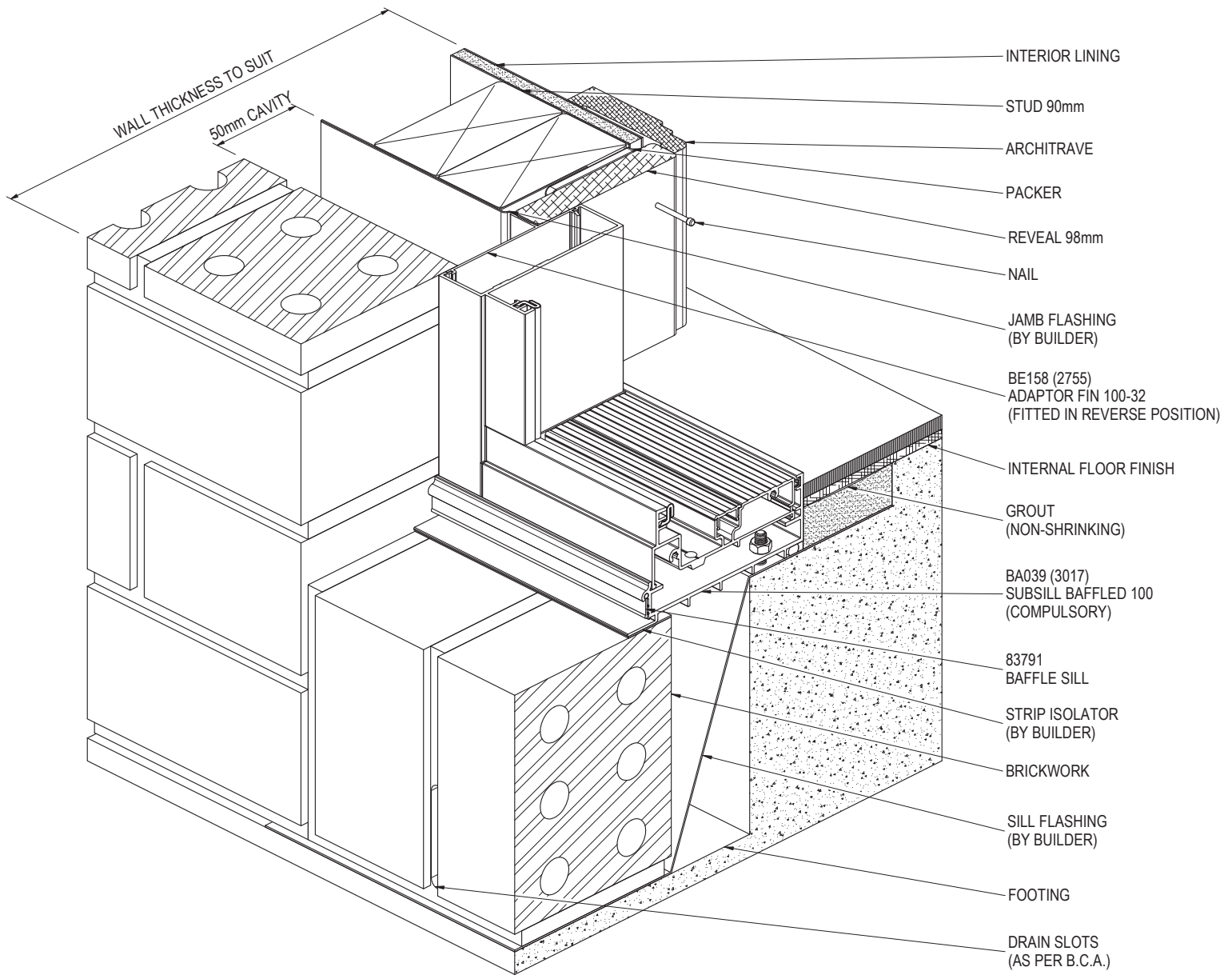


NOTE:  
FOR SITE CLASSIFICATIONS OF UP TO AND INCLUDING 'N6' OR SIMILAR, FIXINGS ARE TO BE AT 450mm CENTRE MAXIMUM, FOR SITUATIONS IN EXCESS OF THIS THE FIXINGS ARE TO BE AT 300mm CENTRES MAXIMUM. FIXING SIZE TO BE AS PER ENGINEER'S DETAILS.

PRODUCT NO: COM 100 BD  
DRAWING NO: COM-BD-02-12  
DRAWN: DJH

DATE: 07/05/14  
ISSUE: A  
SCALE: 1 : 3

## TYPICAL BRICK VENEER CONSTRUCTION - SILL DETAIL - OPEN IN



NOTE:  
FOR SITE CLASSIFICATIONS OF UP TO AND INCLUDING 'N6' OR SIMILAR, FIXINGS ARE TO BE AT 450mm CENTRE MAXIMUM, FOR SITUATIONS IN EXCESS OF THIS THE FIXINGS ARE TO BE AT 300mm CENTRES MAXIMUM. FIXING SIZE TO BE AS PER ENGINEER'S DETAILS.

PRODUCT NO: COM 100 BD  
DRAWING NO: COM-BD-02-13  
DRAWN: DJH

DATE: 07/05/14  
ISSUE: A  
SCALE: 1 : 3