

Essential

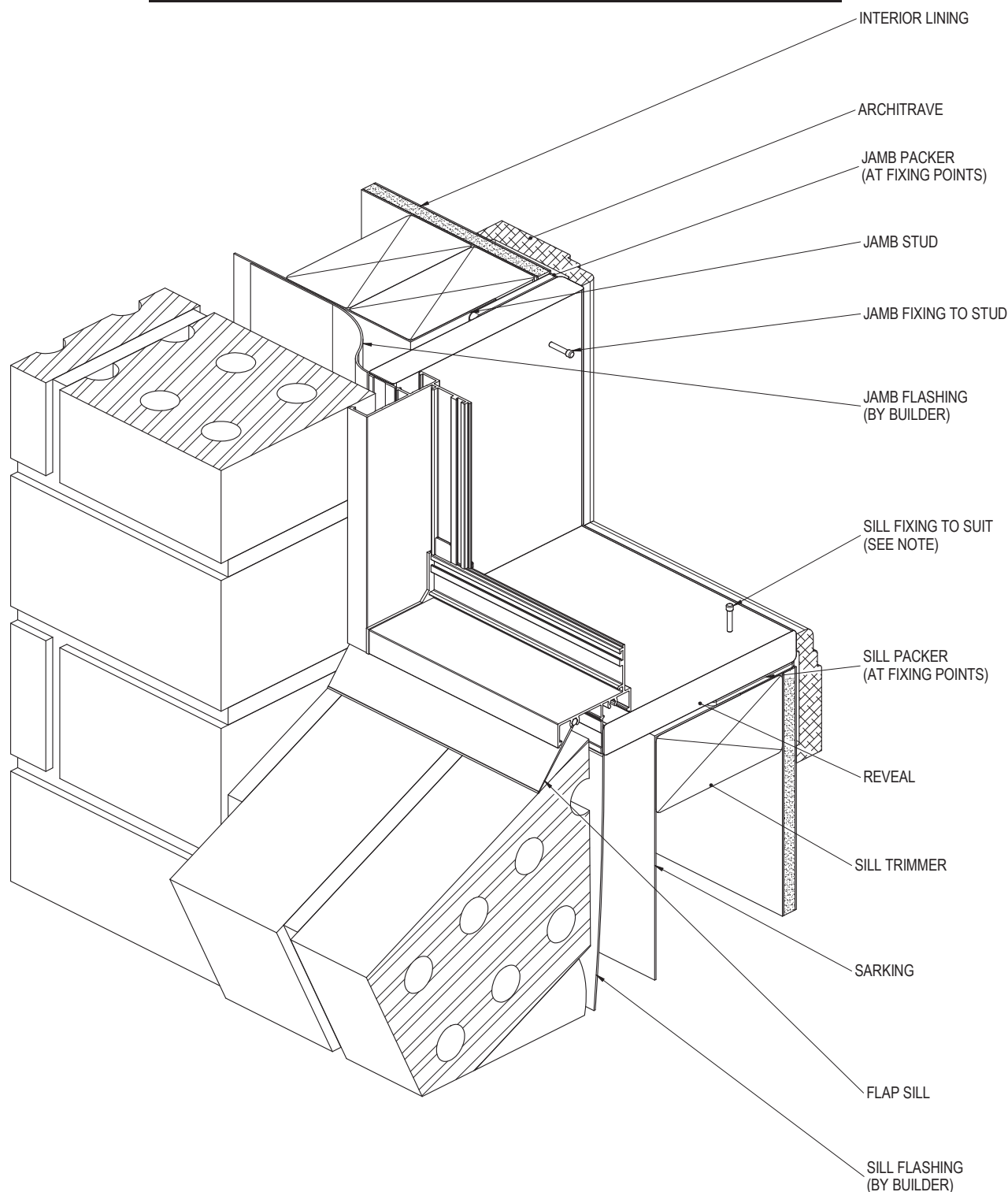
Awning Window (52mm)

Casement Window (52mm)

Fixed Window (52mm-EG)

Installation Details

BRICK VENEER CONSTRUCTION - SILL & JAMB DETAIL



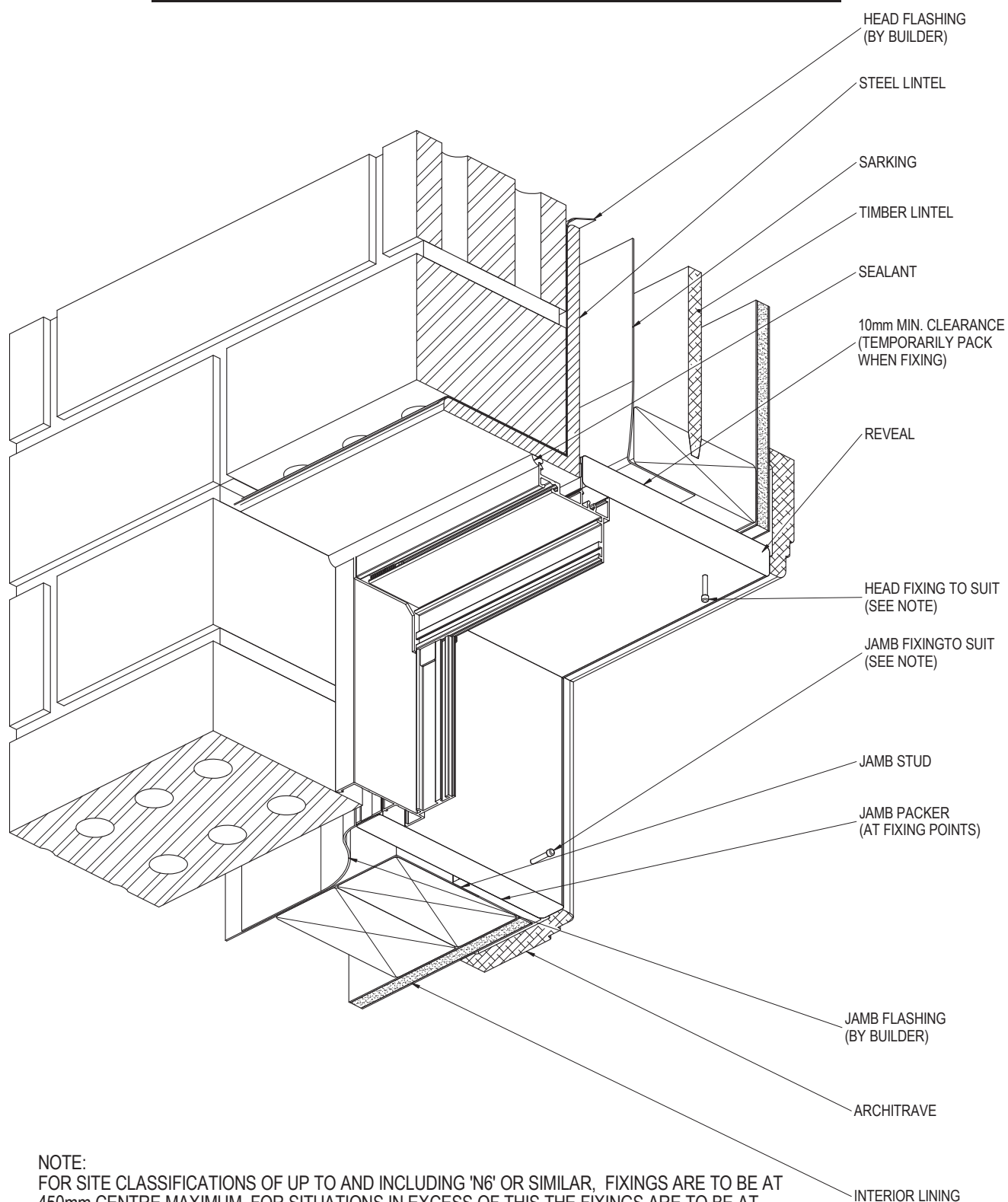
NOTE:
FOR SITE CLASSIFICATIONS OF UP TO AND INCLUDING 'N6' OR SIMILAR, FIXINGS ARE TO BE AT 450mm CENTRE MAXIMUM, FOR SITUATIONS IN EXCESS OF THIS THE FIXINGS ARE TO BE AT 300mm CENTRES MAXIMUM. FIXING SIZE TO BE EQUIVALENT TO A $\phi 2.2$ mm STEEL NAIL MINIMUM.

PRODUCT NO: ESS-AWN-52
DRAWING NO: ESS-AWN-02-01
DRAWN: JCF

DATE: 20/05/14
ISSUE: A
SCALE: 1 : 3

 **SUNCOAST
WINDOWS**
Quality . Style . Innovation

BRICK VENEER CONSTRUCTION - HEAD & JAMB DETAIL



NOTE:
FOR SITE CLASSIFICATIONS OF UP TO AND INCLUDING 'N6' OR SIMILAR, FIXINGS ARE TO BE AT 450mm CENTRE MAXIMUM, FOR SITUATIONS IN EXCESS OF THIS THE FIXINGS ARE TO BE AT 300mm CENTRES MAXIMUM. FIXING SIZE TO BE EQUIVALENT TO A $\varnothing 2.2$ mm STEEL NAIL MINIMUM.

PRODUCT NO: ESS-AWN-52

DRAWING NO: ESS-AWN-02-02

DRAWN: JCF

DATE: 20/05/14

ISSUE: A

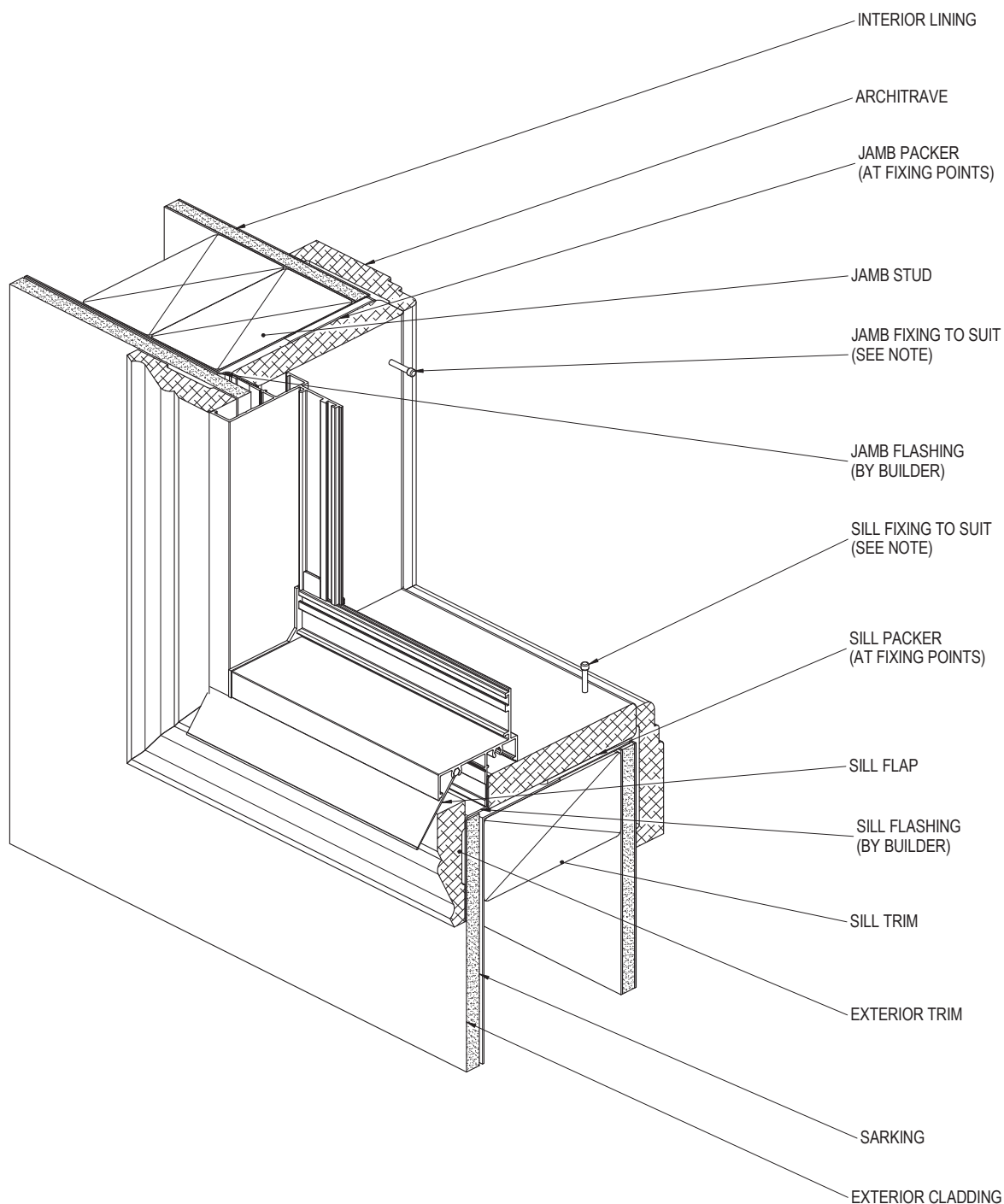
SCALE: 1 : 3



SUNCOAST
WINDOWS

Quality . Style . Innovation

CLADDING CONSTRUCTION - SILL & JAMB DETAIL



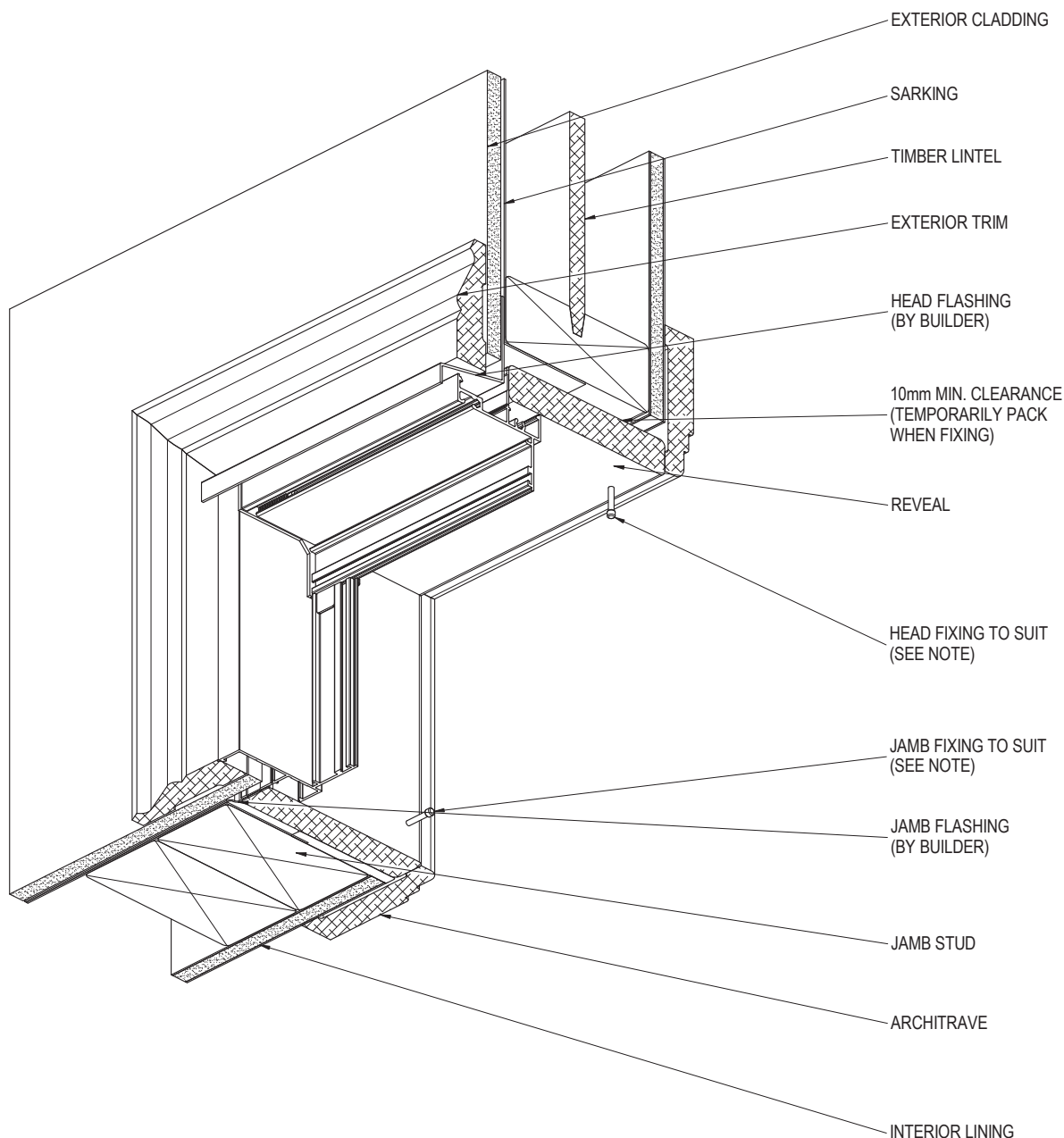
NOTE:
FOR SITE CLASSIFICATIONS OF UP TO AND INCLUDING 'N6' OR SIMILAR, FIXINGS ARE TO BE AT 450mm CENTRE MAXIMUM, FOR SITUATIONS IN EXCESS OF THIS THE FIXINGS ARE TO BE AT 300mm CENTRES MAXIMUM. FIXING SIZE TO BE EQUIVALENT TO A \varnothing 2.2mm STEEL NAIL MINIMUM.

PRODUCT NO: ESS-AWN-52
DRAWING NO: ESS-AWN-02-03
DRAWN: JCF

DATE: 20/05/14
ISSUE: A
SCALE: 1 : 3

 **SUNCOAST
WINDOWS**
Quality . Style . Innovation

CLADDING CONSTRUCTION - HEAD & JAMB DETAIL



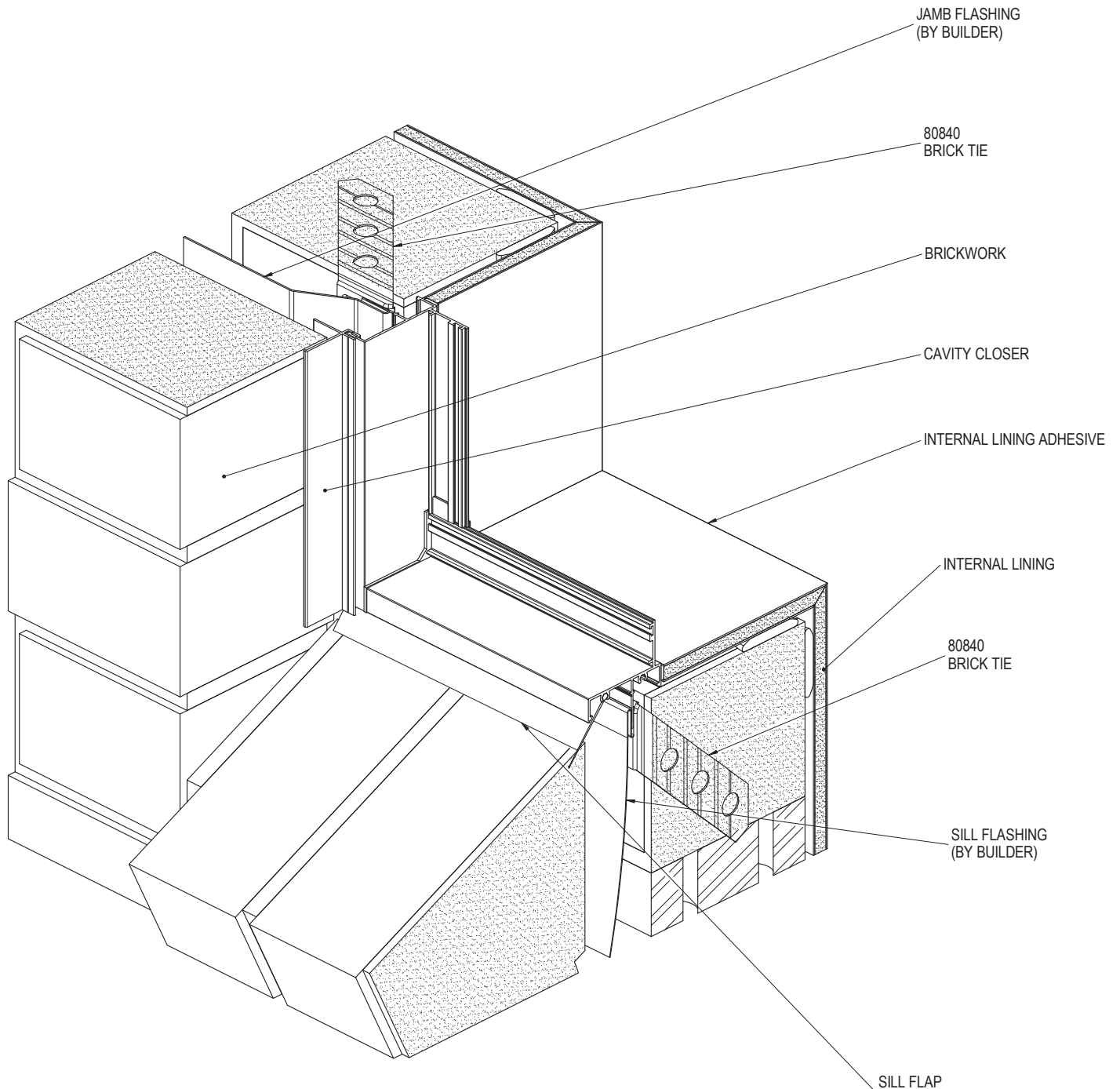
NOTE:
FOR SITE CLASSIFICATIONS OF UP TO AND INCLUDING 'N6' OR SIMILAR, FIXINGS ARE TO BE AT 450mm CENTRE MAXIMUM, FOR SITUATIONS IN EXCESS OF THIS THE FIXINGS ARE TO BE AT 300mm CENTRES MAXIMUM. FIXING SIZE TO BE EQUIVALENT TO A $\varnothing 2.2\text{mm}$ STEEL NAIL MINIMUM.

PRODUCT NO: ESS-AWN-52
DRAWING NO: ESS-AWN-02-04
DRAWN: JCF

DATE: 20/05/14
ISSUE: A
SCALE: 1 : 3

 **SUNCOAST
WINDOWS**
Quality . Style . Innovation

CAVITY BRICK CONSTRUCTION - SILL & JAMB DETAIL



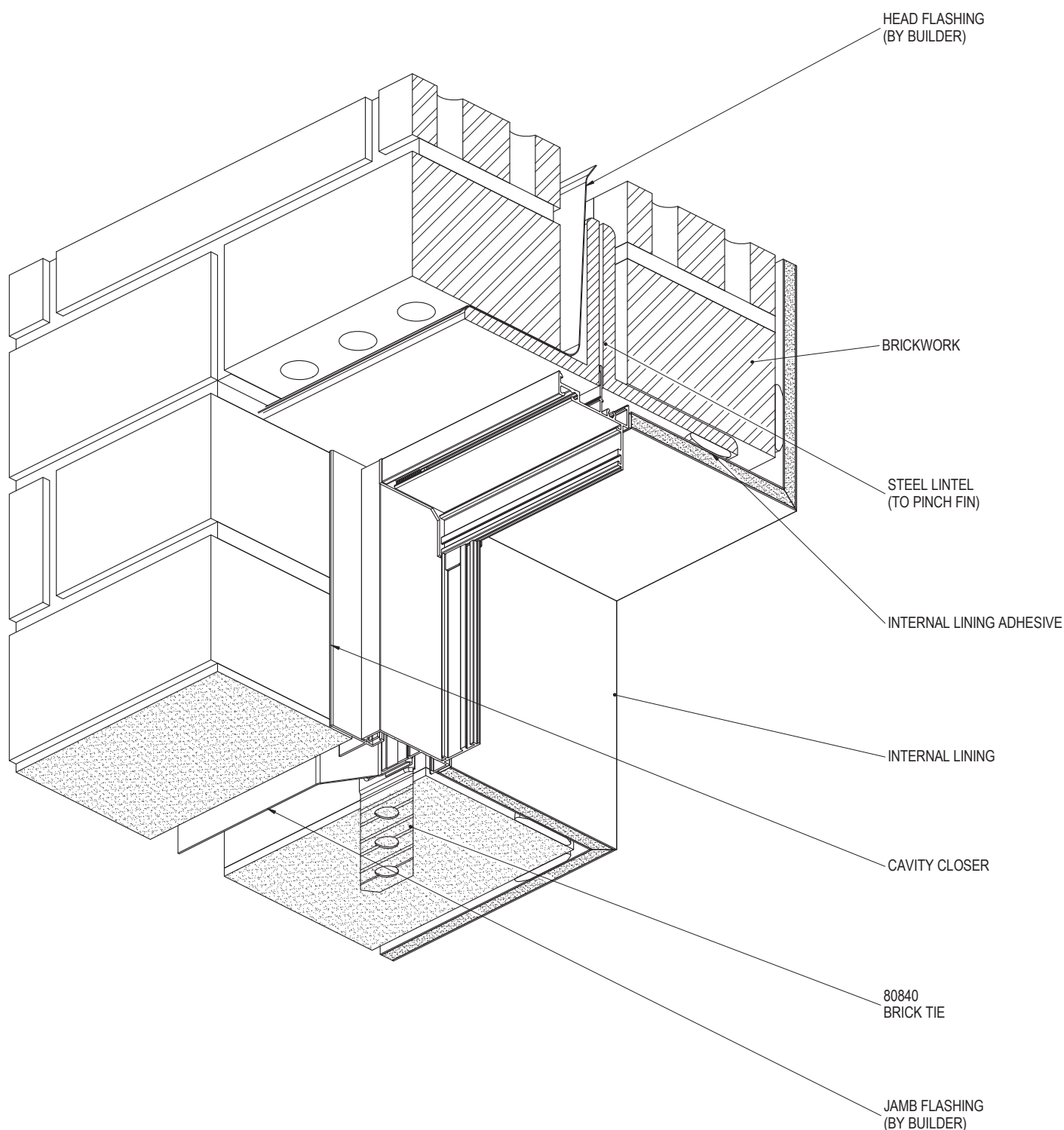
NOTE:
FOR SITE CLASSIFICATIONS OF UP TO AND INCLUDING 'N6' OR SIMILAR, FIXINGS ARE TO BE AT 450mm CENTRE MAXIMUM, FOR SITUATIONS IN EXCESS OF THIS THE FIXINGS ARE TO BE AT 300mm CENTRES MAXIMUM. FIXING SIZE TO BE EQUIVALENT TO A $\phi 2.2\text{mm}$ STEEL NAIL MINIMUM.

PRODUCT NO: ESS-AWN-52
DRAWING NO: ESS-AWN-02-05
DRAWN: JCF

DATE: 20/05/14
ISSUE: A
SCALE: 1 : 3

 **SUNCOAST
WINDOWS**
Quality . Style . Innovation

CAVITY BRICK CONSTRUCTION - HEAD & JAMB DETAIL



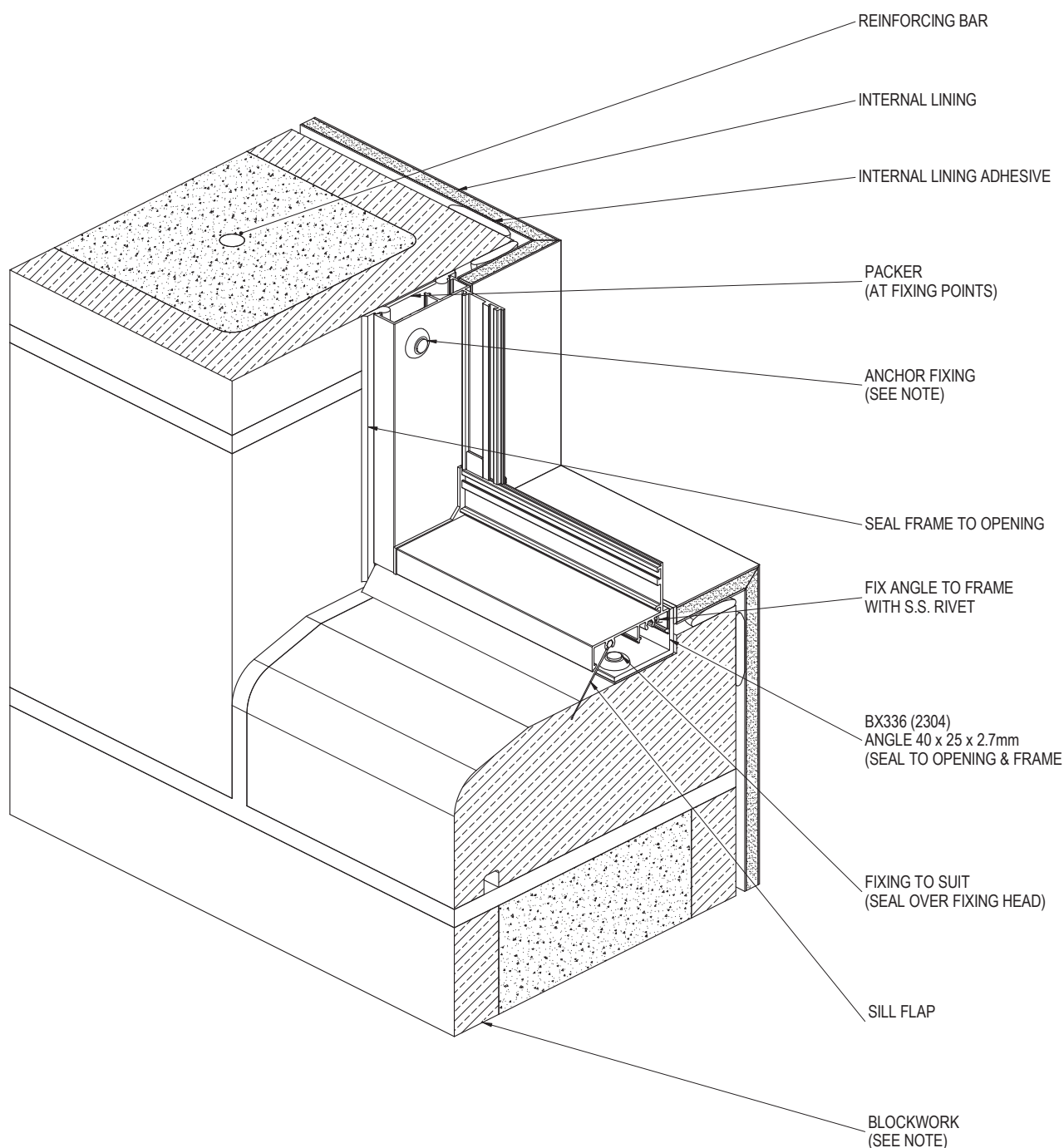
NOTE:
FOR SITE CLASSIFICATIONS OF UP TO AND INCLUDING 'N6' OR SIMILAR, FIXINGS ARE TO BE AT 450mm CENTRE MAXIMUM, FOR SITUATIONS IN EXCESS OF THIS THE FIXINGS ARE TO BE AT 300mm CENTRES MAXIMUM. FIXING SIZE TO BE EQUIVALENT TO A \varnothing 2.2mm STEEL NAIL MINIMUM.

PRODUCT NO: ESS-AWN-52
DRAWING NO: ESS-AWN-02-06
DRAWN: JCF

DATE: 20/05/14
ISSUE: A
SCALE: 1 : 3

 **SUNCOAST
WINDOWS**
Quality . Style . Innovation

BLOCKWORK CONSTRUCTION - SILL & JAMB DETAIL



NOTE:
SURFACE OF BLOCKS TO WINDOW OPENING MUST BE TANKED WITH A SUITABLE SEALER TO PREVENT INGRESS OF MOISTURE. ENSURE SURFACES TO BE SEALED ARE SOUND, CLEAN, DRY AND FREE FROM ANY CONTAMINANTS BEFORE SEALING.

FOR SITE CLASSIFICATIONS OF UP TO AND INCLUDING 'N6' OR SIMILAR, FIXINGS ARE TO BE AT 450mm CENTRE MAXIMUM, FOR SITUATIONS IN EXCESS OF THIS THE FIXINGS ARE TO BE AT 300mm CENTRES MAXIMUM. FIXING SIZE TO BE EQUIVALENT TO A \varnothing 2.2mm STEEL NAIL MINIMUM.

PRODUCT NO: ESS-AWN-52

DRAWING NO: ESS-AWN-02-07

DRAWN: JCF

DATE: 21/05/14

ISSUE: A

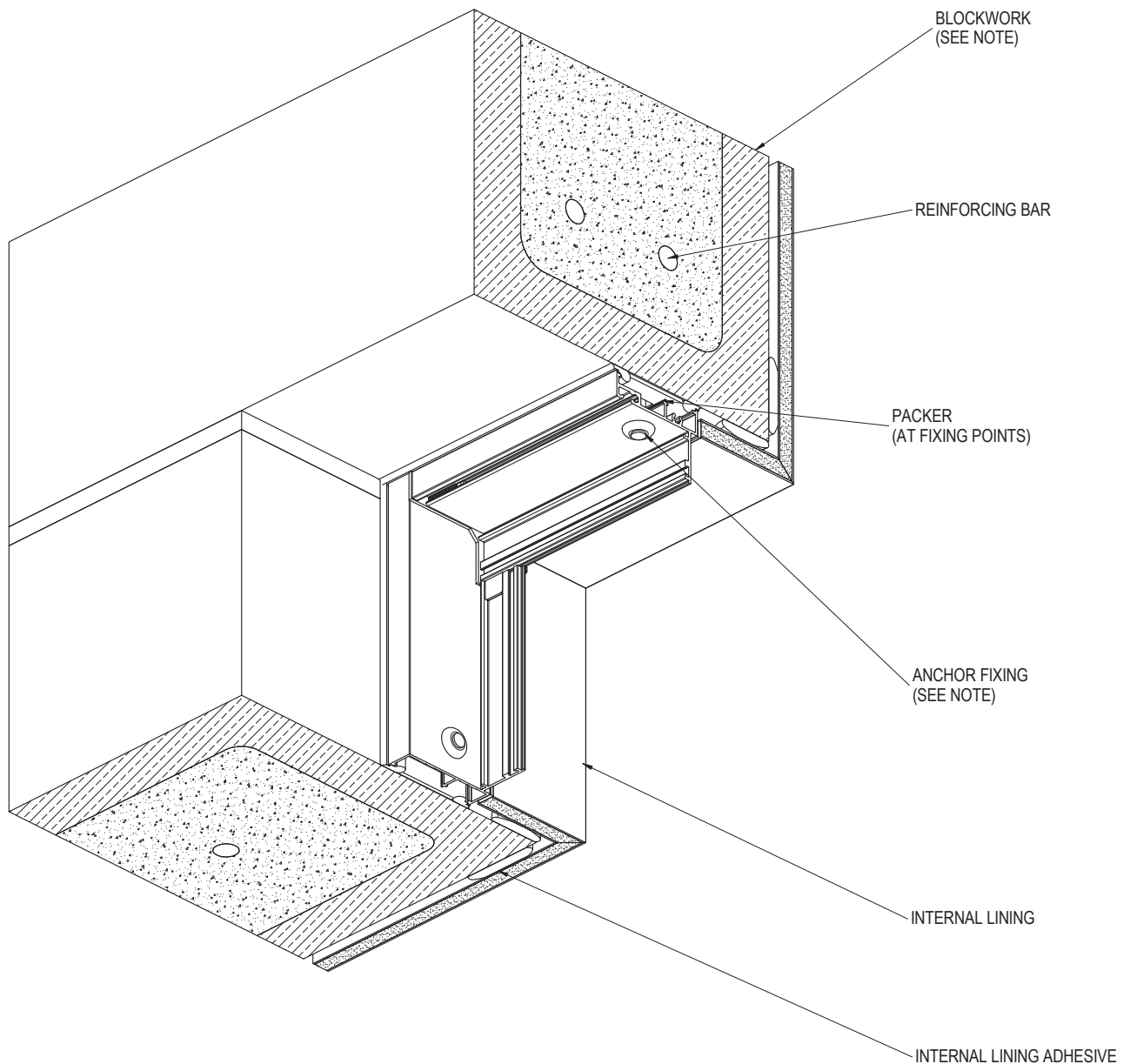
SCALE: 1 : 3



SUNCOAST
WINDOWS

Quality . Style . Innovation

BLOCKWORK CONSTRUCTION - HEAD & JAMB DETAIL



NOTE:

SURFACE OF BLOCKS TO WINDOW OPENING MUST BE TANKED WITH A SUITABLE SEALER TO PREVENT INGRESS OF MOISTURE. ENSURE SURFACES TO BE SEALED ARE SOUND, CLEAN, DRY AND FREE FROM ANY CONTAMINANTS BEFORE SEALING.

FOR SITE CLASSIFICATIONS OF UP TO AND INCLUDING 'N6' OR SIMILAR, FIXINGS ARE TO BE AT 450mm CENTRE MAXIMUM, FOR SITUATIONS IN EXCESS OF THIS THE FIXINGS ARE TO BE AT 300mm CENTRES MAXIMUM. FIXING SIZE TO BE EQUIVALENT TO A $\phi 2.2\text{mm}$ STEEL NAIL MINIMUM.

PRODUCT NO: ESS-AWN-52

DRAWING NO: ESS-AWN-02-08

DRAWN: JCF

DATE: 22/05/14

ISSUE: A

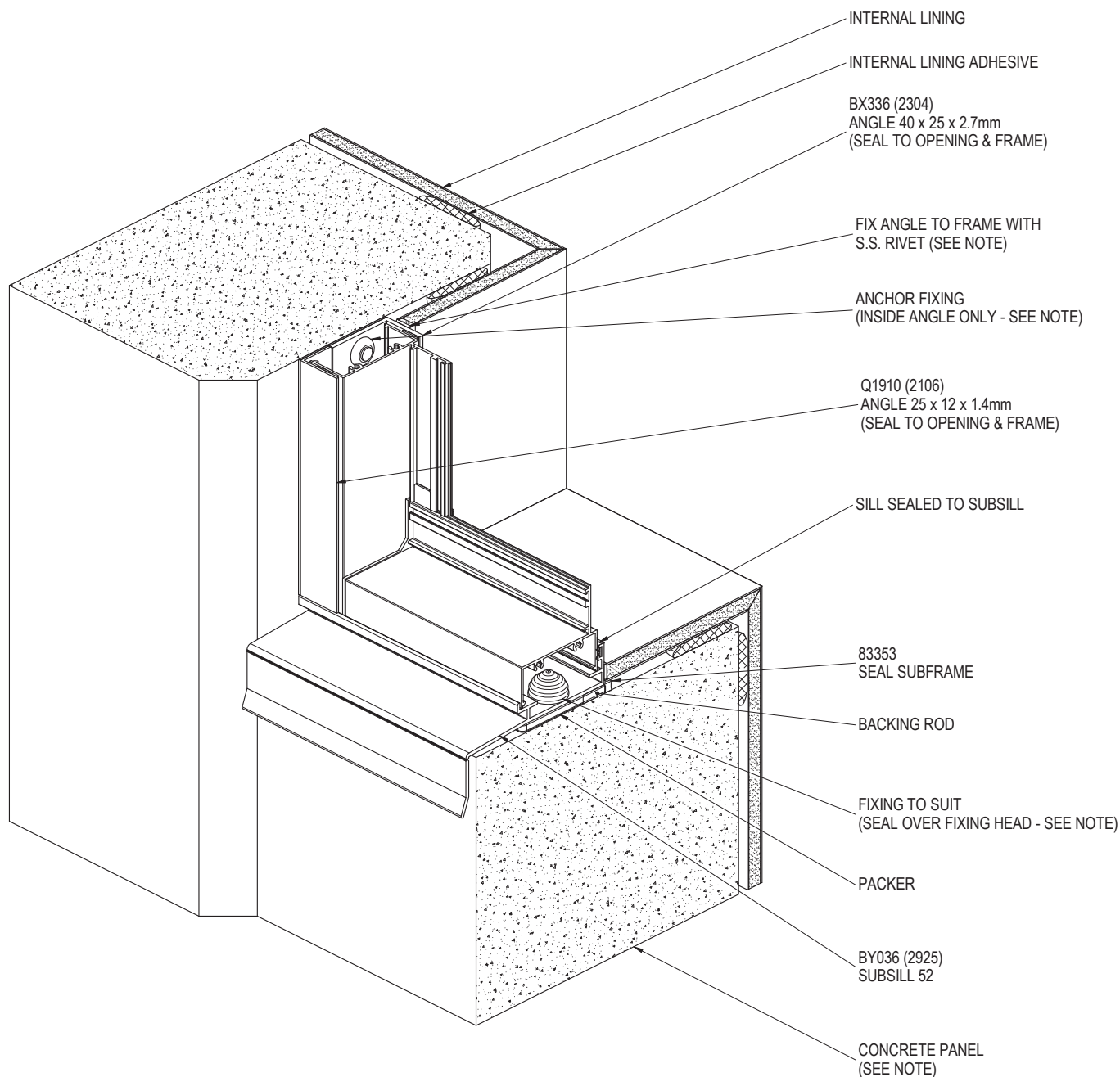
SCALE: 1 : 3



SUNCOAST
WINDOWS

Quality . Style . Innovation

TILT SLAB CONSTRUCTION - SILL & JAMB DETAIL



NOTE:
SURFACE OF CONCRETE TO WINDOW OPENING MUST BE TANKED WITH A SUITABLE SEALER TO PREVENT INGRESS OF MOISTURE. ENSURE SURFACES TO BE SEALED ARE SOUND, CLEAN, DRY AND FREE FROM ANY CONTAMINANTS BEFORE SEALING.

FIXING TYPES & CENTRES TO BE PROJECT SPECIFIC, REFER TO SPECIFICATION AND/OR ENGINEER.

PRODUCT NO: ESS-AWN-52

DRAWING NO: ESS-AWN-02-09

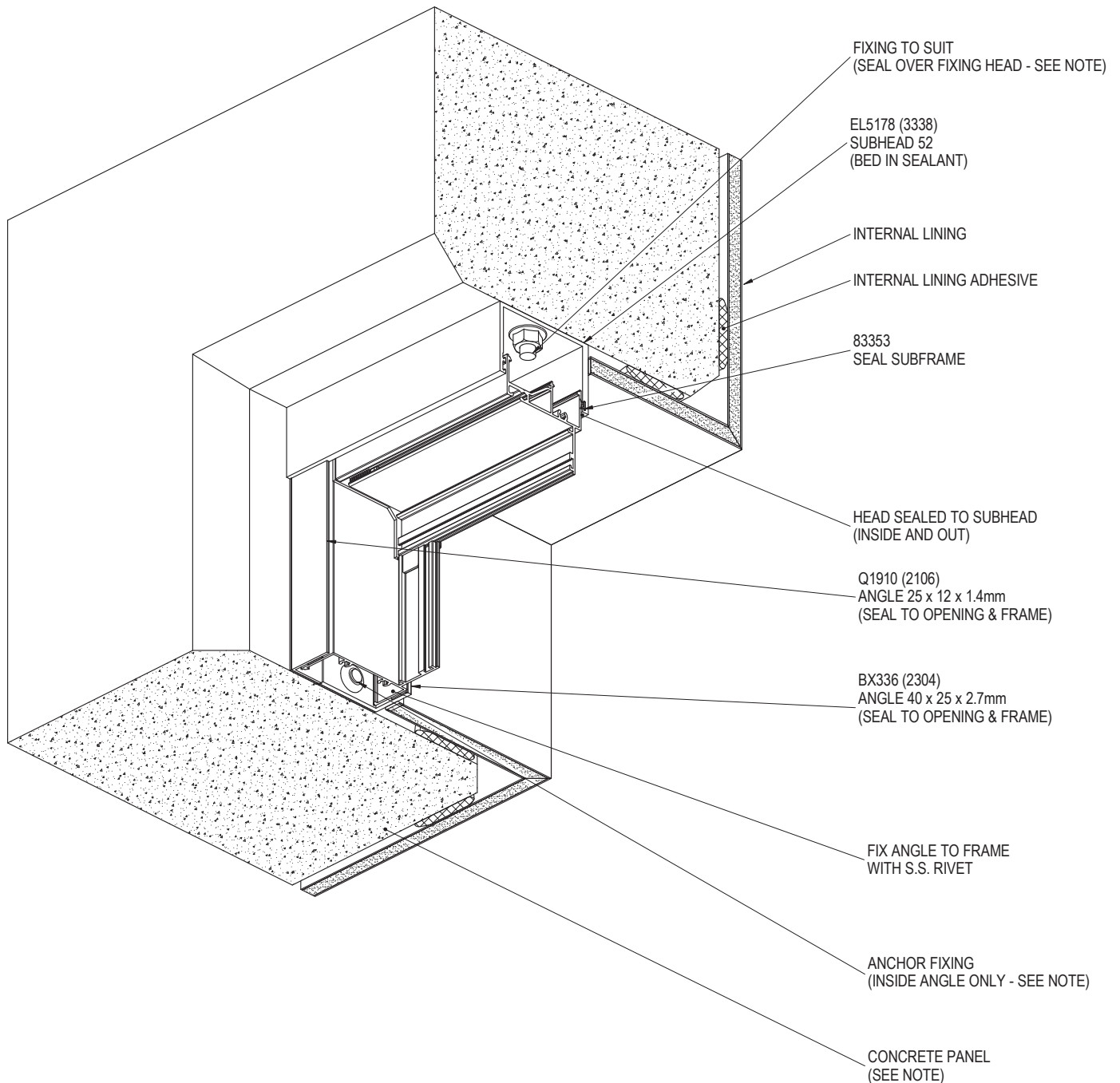
DRAWN: JCF

DATE: 22/05/14

ISSUE: A

SCALE: 1 : 3

TILT SLAB CONSTRUCTION - HEAD & JAMB DETAIL



NOTE:
SURFACE OF CONCRETE TO WINDOW OPENING MUST BE TANKED WITH A SUITABLE SEALER TO PREVENT INGRESS OF MOISTURE. ENSURE SURFACES TO BE SEALED ARE SOUND, CLEAN, DRY AND FREE FROM ANY CONTAMINANTS BEFORE SEALING.

FIXING TYPES & CENTRES TO BE PROJECT SPECIFIC, REFER TO SPECIFICATION AND/OR ENGINEER.

PRODUCT NO: ESS-AWN-52
DRAWING NO: ESS-AWN-02-10
DRAWN: JCF

DATE: 23/05/14
ISSUE: A
SCALE: 1 : 3

 **SUNCOAST
WINDOWS**
Quality . Style . Innovation