

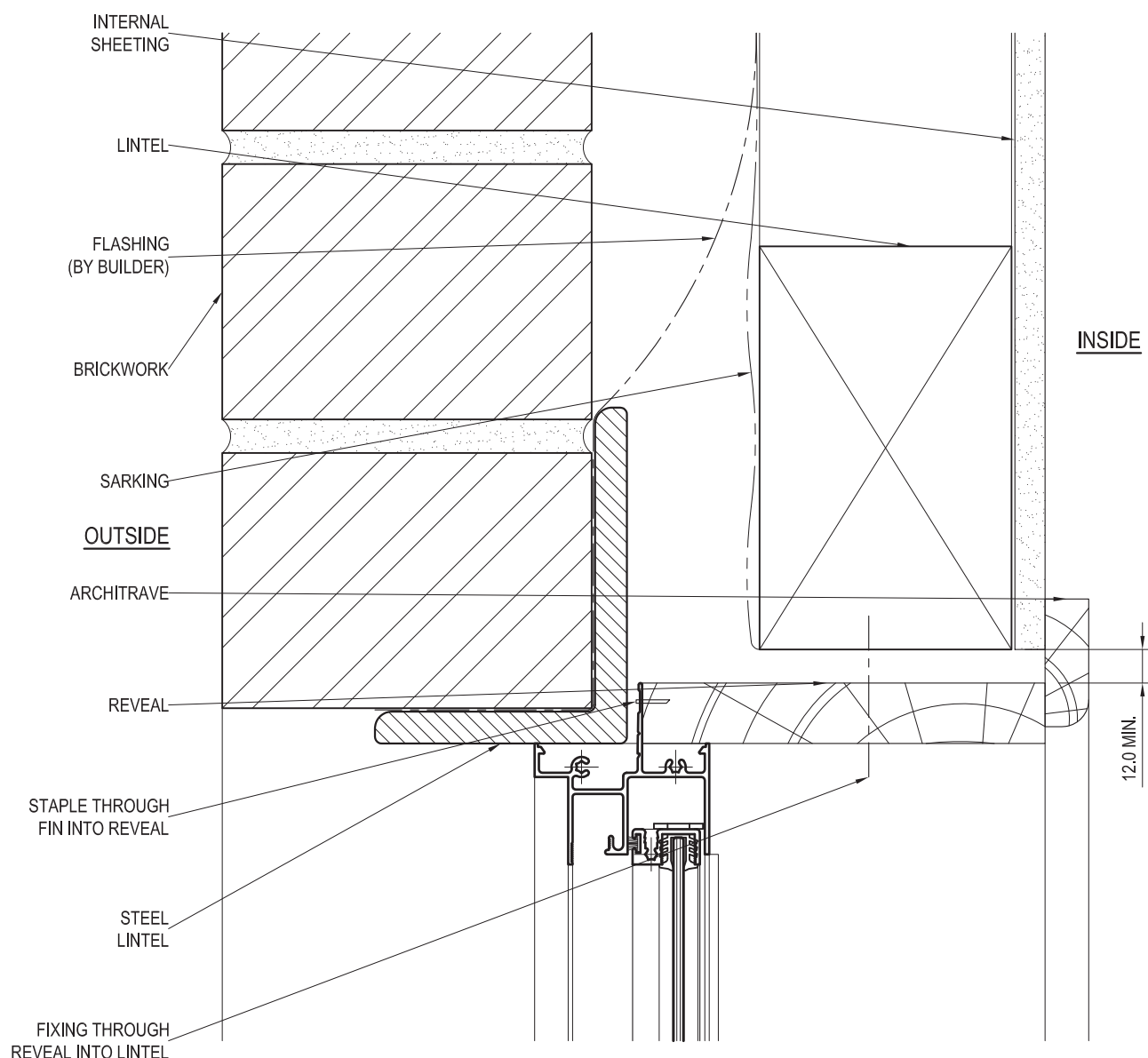
Essential

Sliding Window (52mm)

Fixed Window (52mm-IG)

Installation Details

BRICK VENEER - HEAD DETAIL



FIXINGS: UP TO AND INCLUDING SITE CLASSIFICATION OF N6, C4 (3.0 kPa) FIXINGS ARE TO BE AT 450mm CENTRE MAXIMUM. FOR SITUATIONS IN EXCESS OF THIS THE FIXINGS ARE TO BE AT 300mm CENTRES MAXIMUM. FIXING SIZE TO BE EQUIVALENT TO A Ø2.2mm STEEL NAIL MINIMUM.

PRODUCT NO: ESS Sliding Window (52mm)

DATE: 11/01/08

DRAWING NO: PD214-05-01

ISSUE: B

DRAWN: DJH

SCALE: 1:2

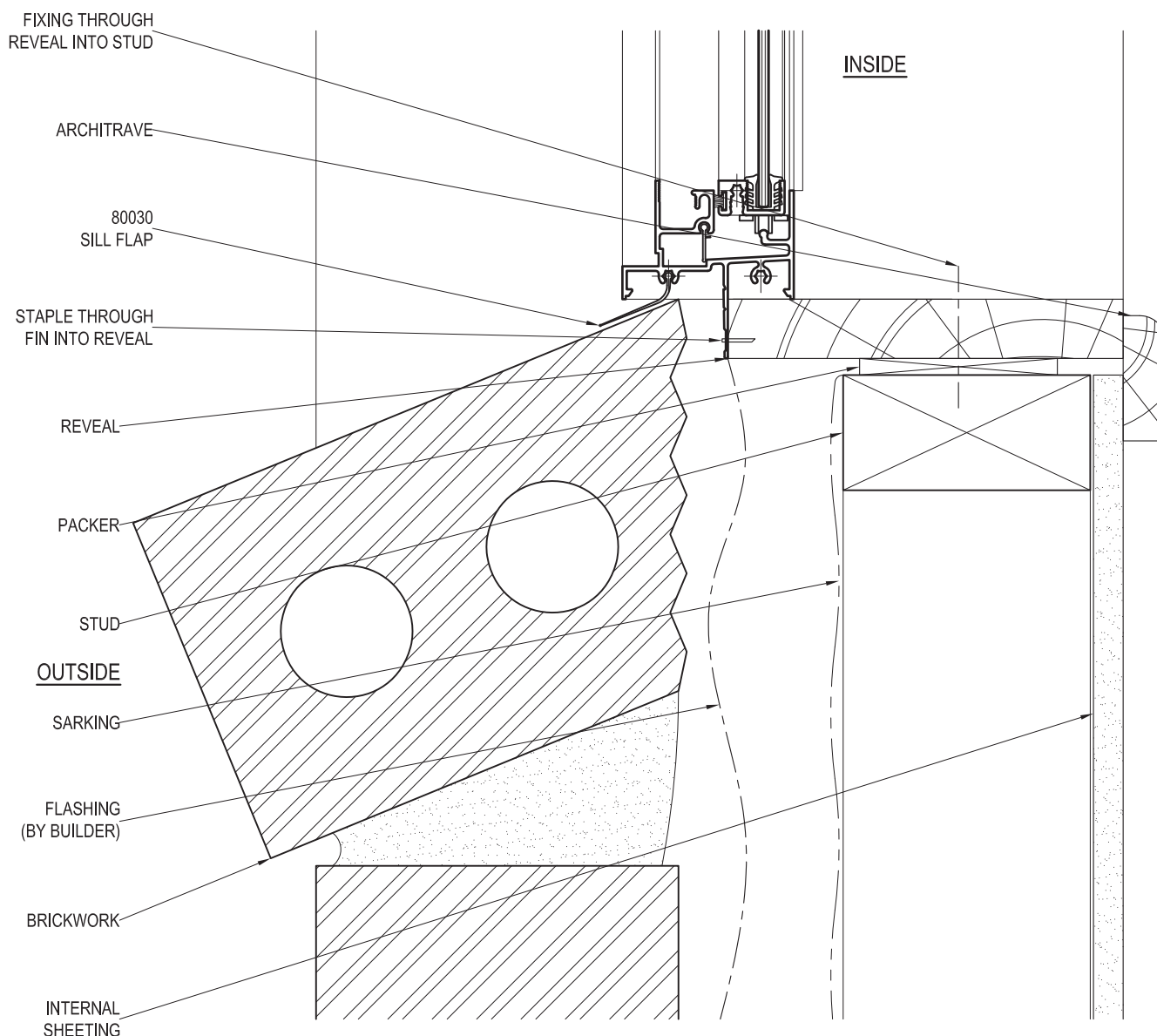
Suncoast Windows & Doors Pty Ltd ABN 78010409819 © 2008 All rights reserved



**SUNCOAST
WINDOWS**

Quality . Style . Innovation

BRICK VENEER - SILL DETAIL



FIXINGS: UP TO AND INCLUDING SITE CLASSIFICATION OF N6, C4 (3.0 kPa) FIXINGS ARE TO BE AT 450mm CENTRE MAXIMUM. FOR SITUATIONS IN EXCESS OF THIS THE FIXINGS ARE TO BE AT 300mm CENTRES MAXIMUM. FIXING SIZE TO BE EQUIVALENT TO A Ø2.2mm STEEL NAIL MINIMUM.

PRODUCT NO: ESS Sliding Window (52mm)

DATE: 11/01/08

DRAWING NO: PD214-05-02

ISSUE: B

DRAWN: DJH

SCALE: 1:2

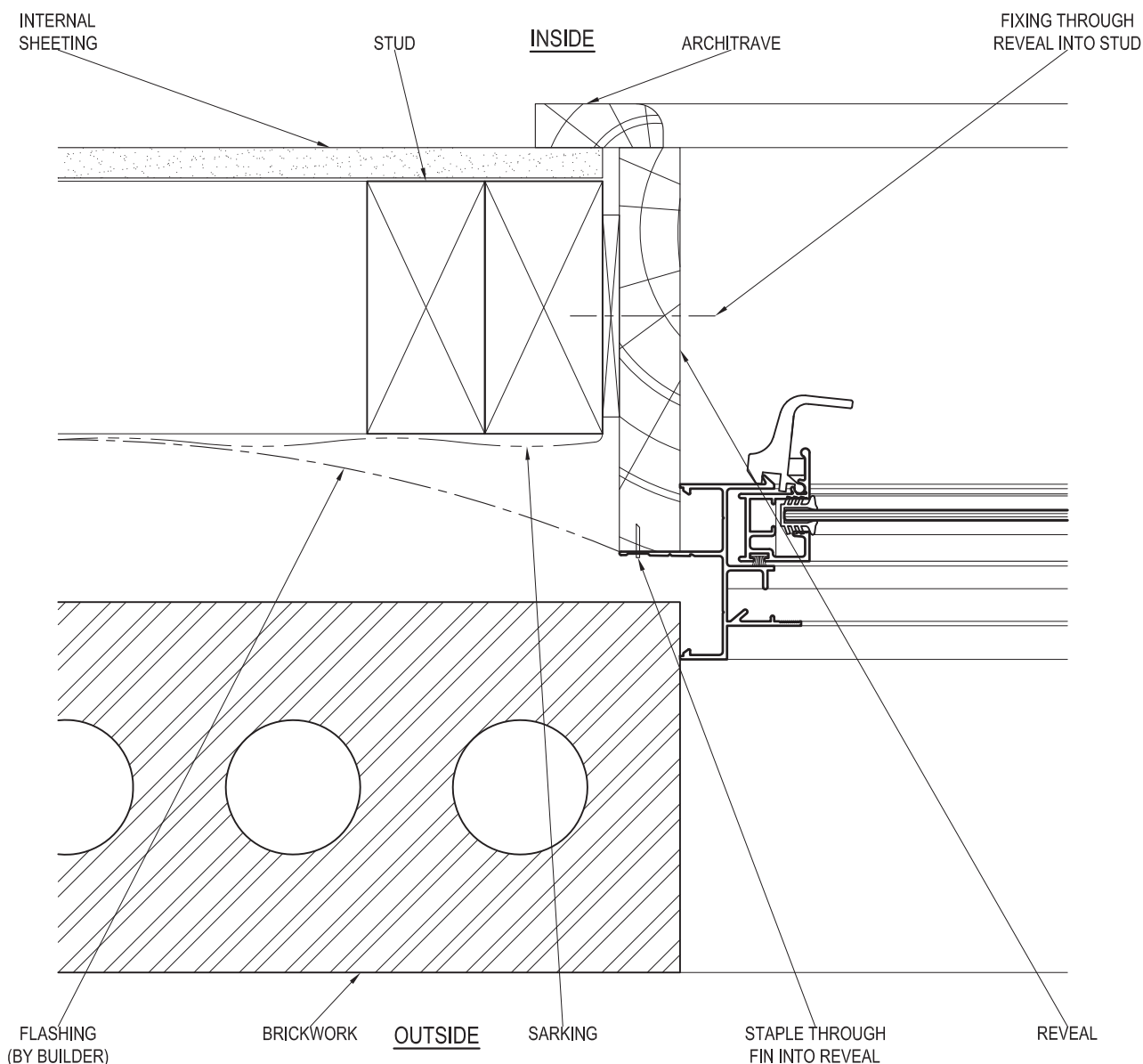
Suncoast Windows & Doors Pty Ltd ABN 78010409819 © 2008 All rights reserved



**SUNCOAST
WINDOWS**

Quality . Style . Innovation

BRICK VENEER - JAMB DETAIL



FIXINGS: UP TO AND INCLUDING SITE CLASSIFICATION OF N6, C4 (3.0 kPa) FIXINGS ARE TO BE AT 450mm CENTRE MAXIMUM. FOR SITUATIONS IN EXCESS OF THIS THE FIXINGS ARE TO BE AT 300mm CENTRES MAXIMUM. FIXING SIZE TO BE EQUIVALENT TO A Ø2.2mm STEEL NAIL MINIMUM.

PRODUCT NO: ESS Sliding Window (52mm)

DATE: 11/01/08

DRAWING NO: PD214-05-03

ISSUE: B

DRAWN: DJH

SCALE: 1:2

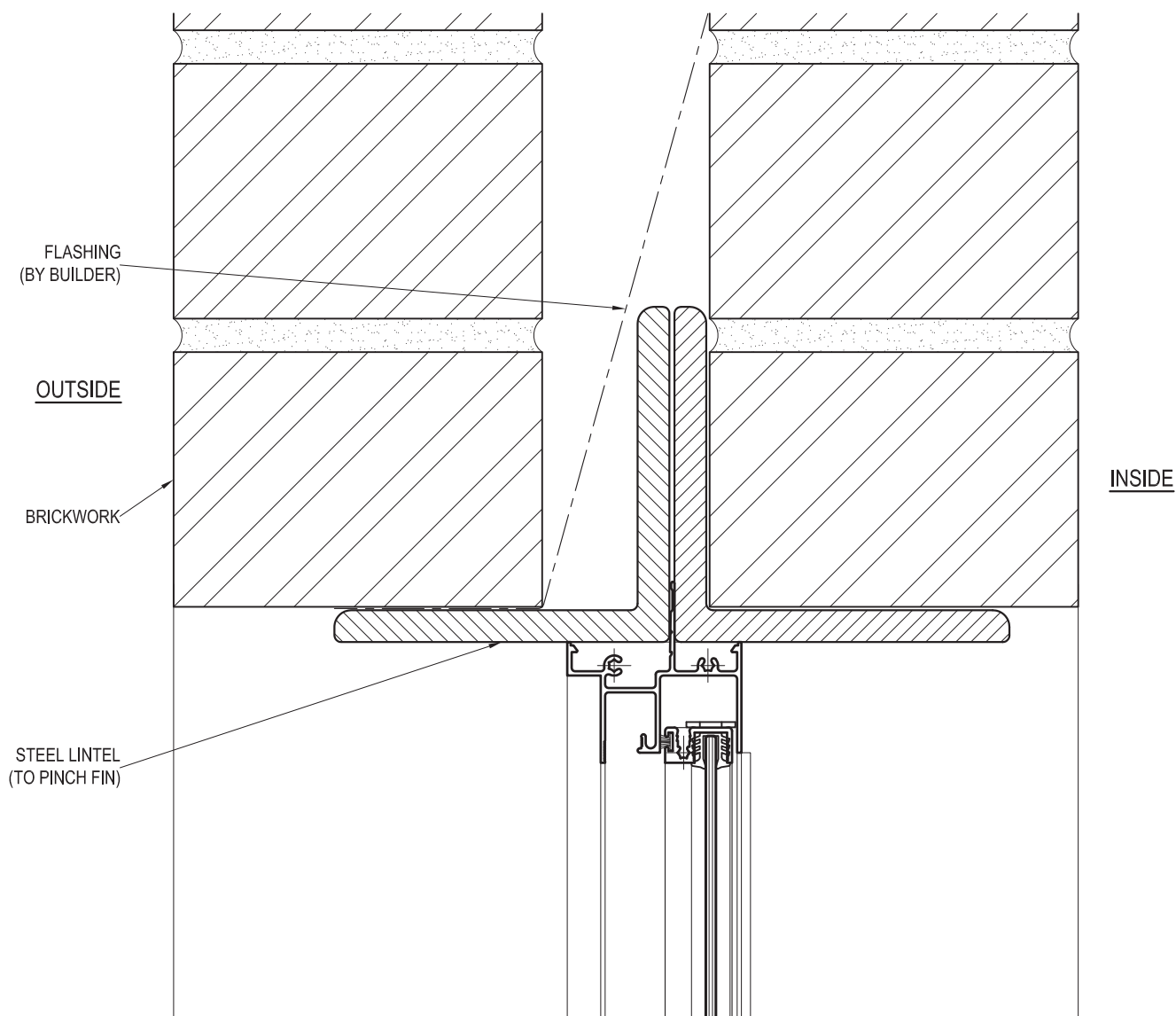
Suncoast Windows & Doors Pty Ltd ABN 78010409819 © 2008 All rights reserved



**SUNCOAST
WINDOWS**

Quality . Style . Innovation

CAVITY BRICK - HEAD DETAIL



FIXINGS: UP TO AND INCLUDING SITE CLASSIFICATION OF N6, C4 (3.0 kPa) FIXINGS ARE TO BE AT 450mm CENTRE MAXIMUM. FOR SITUATIONS IN EXCESS OF THIS THE FIXINGS ARE TO BE AT 300mm CENTRES MAXIMUM. FIXING SIZE TO BE EQUIVALENT TO A Ø2.2mm STEEL NAIL MINIMUM.

PRODUCT NO: ESS Sliding Window (52mm)

DATE: 11/01/08

DRAWING NO: PD214-05-04

ISSUE: B

DRAWN: DJH

SCALE: 1:2

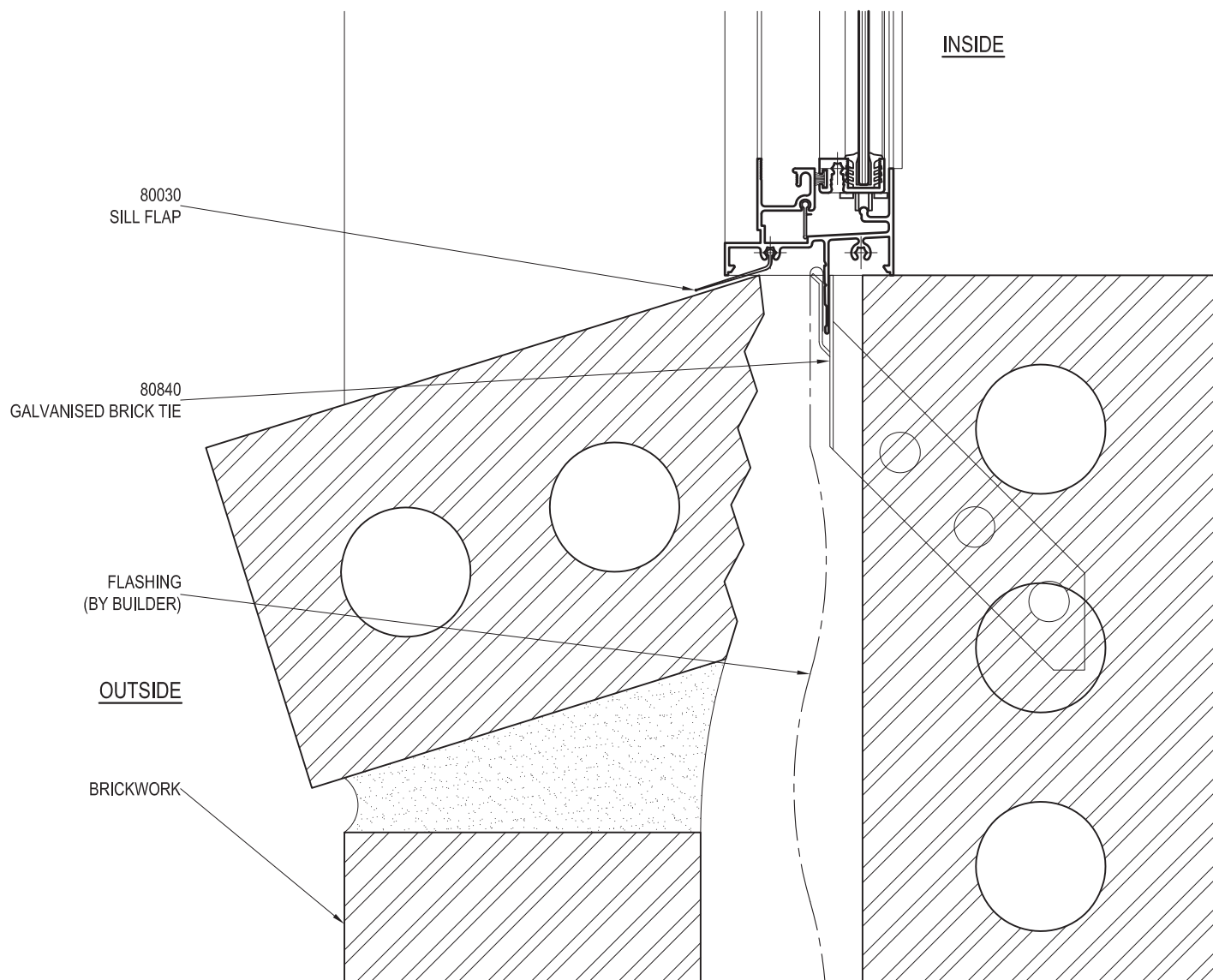
Suncoast Windows & Doors Pty Ltd ABN 78010409819 © 2008 All rights reserved



**SUNCOAST
WINDOWS**

Quality . Style . Innovation

CAVITY BRICK - SILL DETAIL



FIXINGS: UP TO AND INCLUDING SITE CLASSIFICATION OF N6, C4 (3.0 kPa) FIXINGS ARE TO BE AT 450mm CENTRE MAXIMUM. FOR SITUATIONS IN EXCESS OF THIS THE FIXINGS ARE TO BE AT 300mm CENTRES MAXIMUM. FIXING SIZE TO BE EQUIVALENT TO A Ø2.2mm STEEL NAIL MINIMUM.

PRODUCT NO: ESS Sliding Window (52mm)

DATE: 11/01/08

DRAWING NO: PD214-05-05

ISSUE: B

DRAWN: DJH

SCALE: 1:2

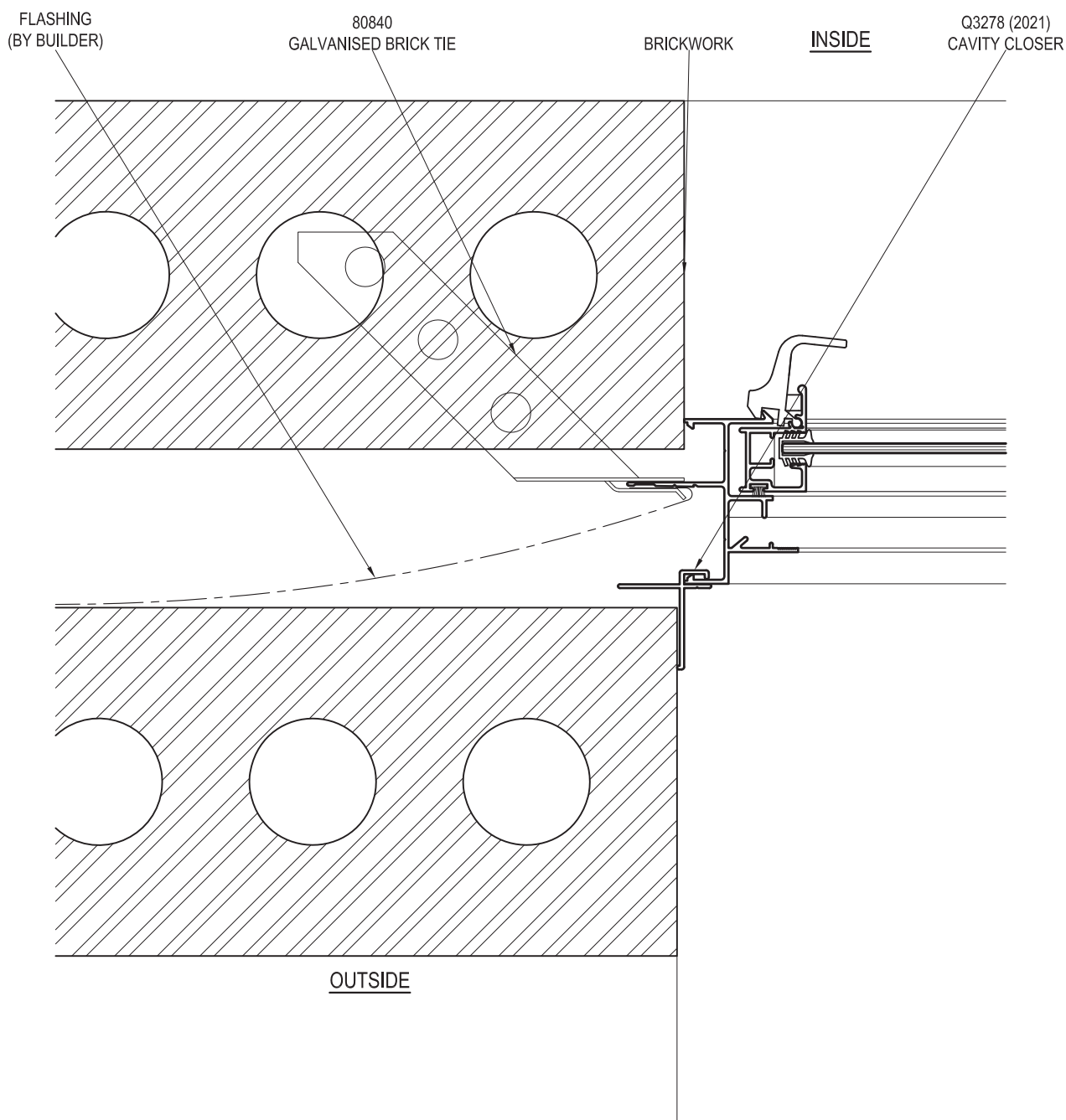
Suncoast Windows & Doors Pty Ltd ABN 78010409819 © 2008 All rights reserved



**SUNCOAST
WINDOWS**

Quality . Style . Innovation

CAVITY BRICK - JAMB DETAIL

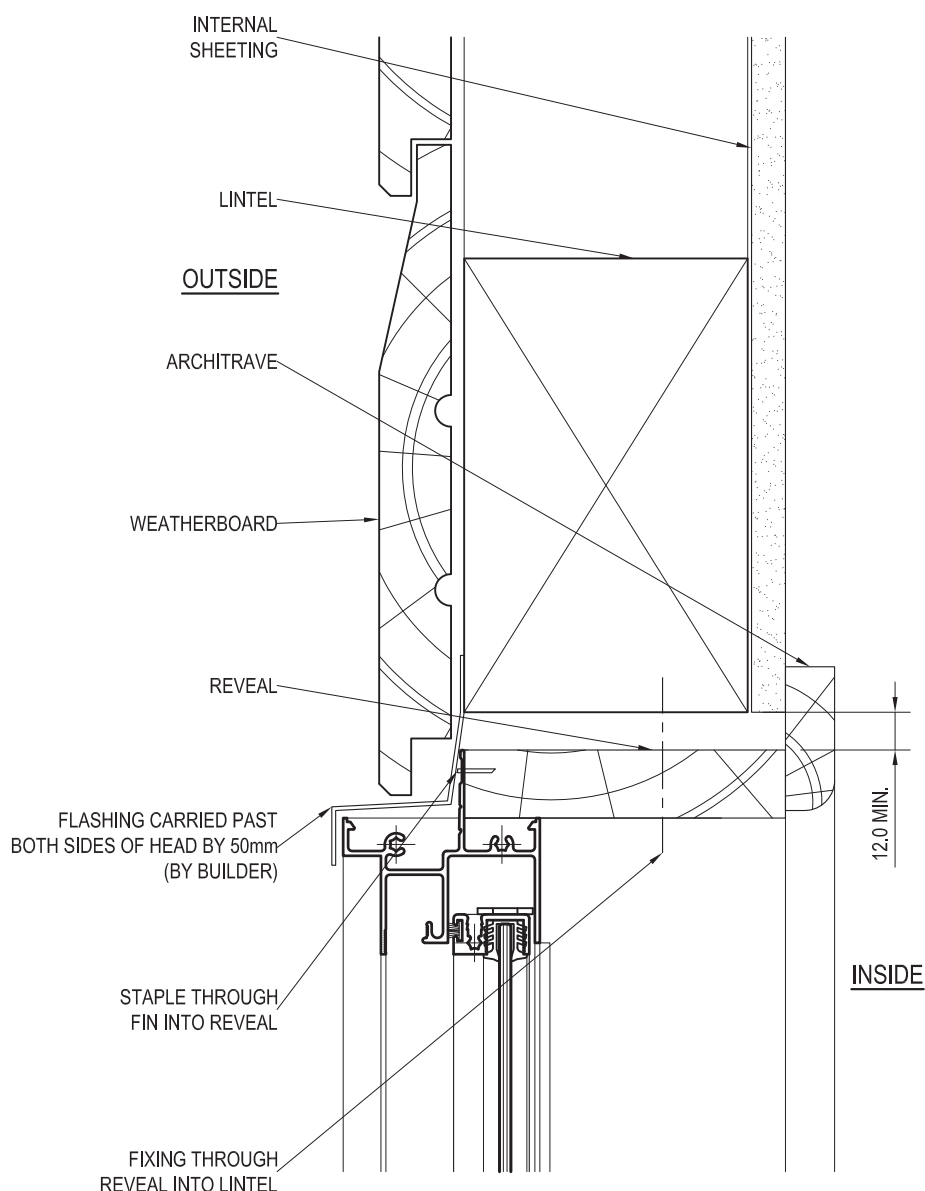


FIXINGS: UP TO AND INCLUDING SITE CLASSIFICATION OF N6, C4 (3.0 kPa) FIXINGS ARE TO BE AT 450mm CENTRE MAXIMUM. FOR SITUATIONS IN EXCESS OF THIS THE FIXINGS ARE TO BE AT 300mm CENTRES MAXIMUM. FIXING SIZE TO BE EQUIVALENT TO A Ø2.2mm STEEL NAIL MINIMUM.

PRODUCT NO:	ESS Sliding Window (52mm)	DATE:	11/01/08
DRAWING NO:	PD214-05-06	ISSUE:	B
DRAWN:	DJH	SCALE:	1:2

Suncoast Windows & Doors Pty Ltd ABN 78010409819 © 2008 All rights reserved

WEATHERBOARD - HEAD DETAIL



FIXINGS: UP TO AND INCLUDING SITE CLASSIFICATION OF N6, C4 (3.0 kPa) FIXINGS ARE TO BE AT 450mm CENTRE MAXIMUM. FOR SITUATIONS IN EXCESS OF THIS THE FIXINGS ARE TO BE AT 300mm CENTRES MAXIMUM. FIXING SIZE TO BE EQUIVALENT TO A Ø2.2mm STEEL NAIL MINIMUM.

PRODUCT NO: ESS Sliding Window (52mm)

DATE: 11/01/08

DRAWING NO: PD214-05-07

ISSUE: B

DRAWN: DJH

SCALE: 1:2

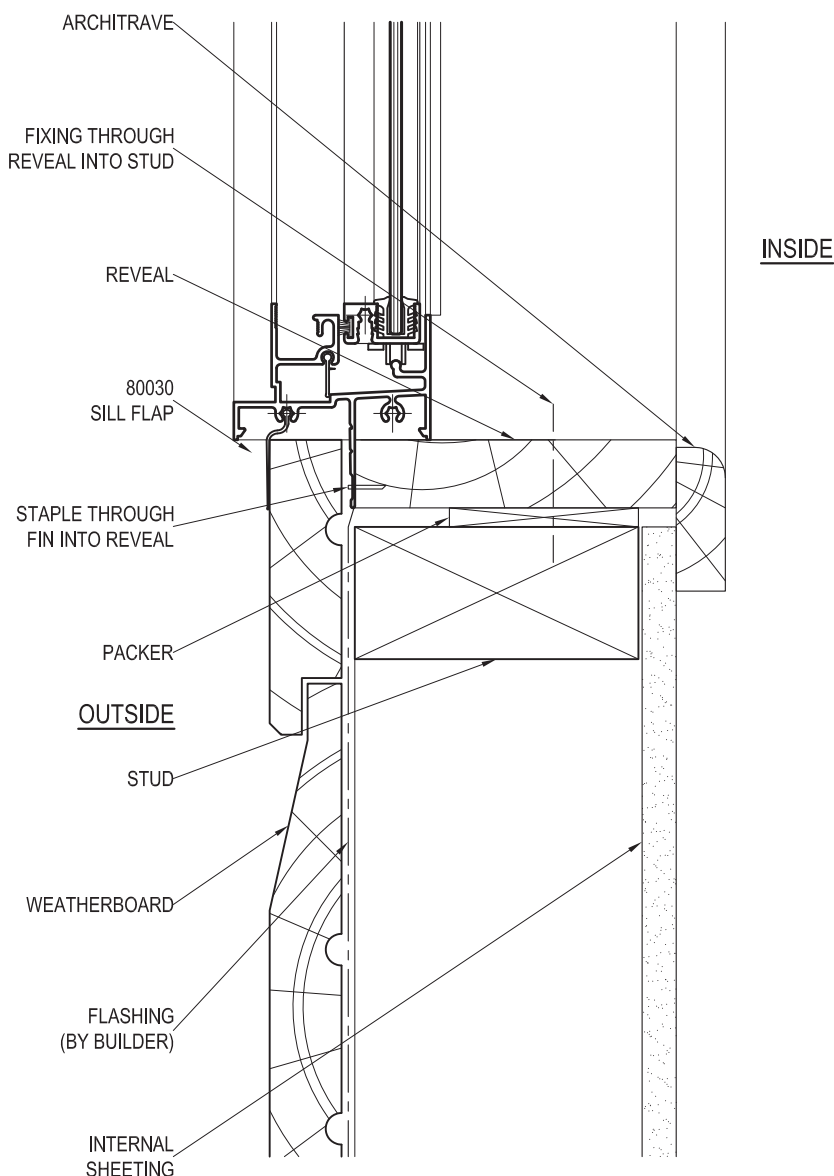
Suncoast Windows & Doors Pty Ltd ABN 78010409819 © 2008 All rights reserved



**SUNCOAST
WINDOWS**

Quality . Style . Innovation

WEATHERBOARD - SILL DETAIL

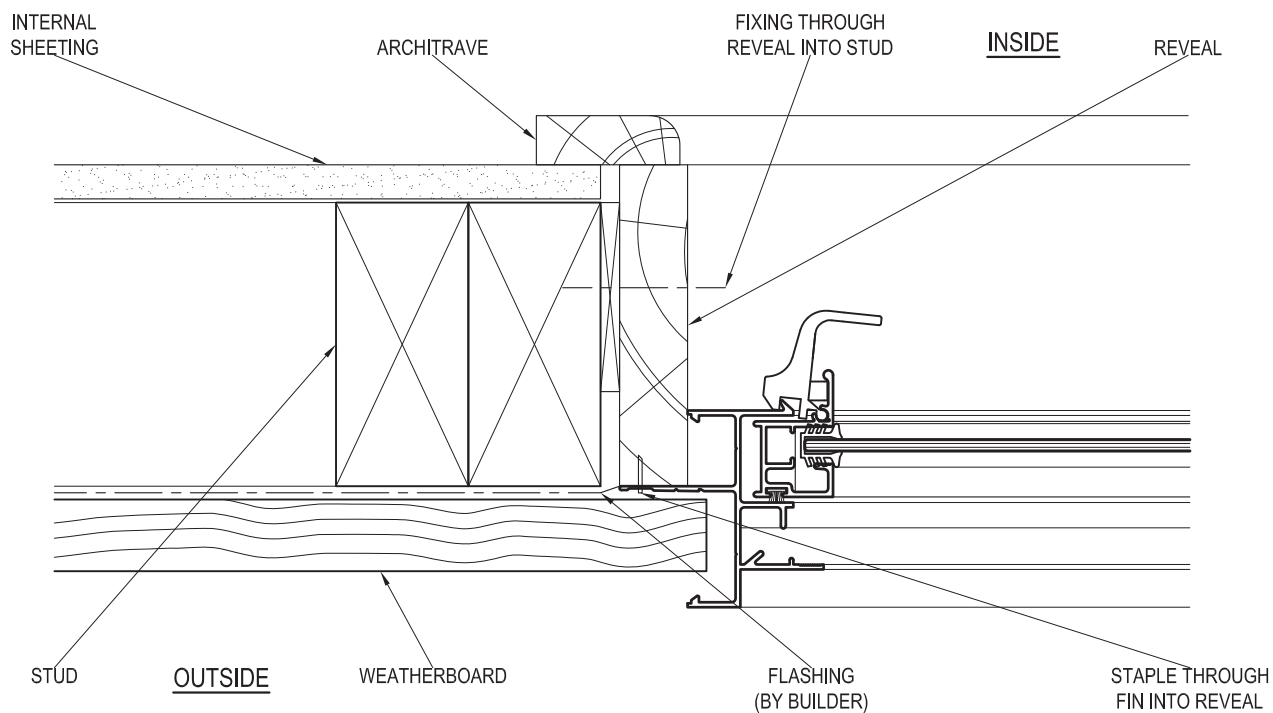


FIXINGS: UP TO AND INCLUDING SITE CLASSIFICATION OF N6, C4 (3.0 kPa) FIXINGS ARE TO BE AT 450mm CENTRE MAXIMUM. FOR SITUATIONS IN EXCESS OF THIS THE FIXINGS ARE TO BE AT 300mm CENTRES MAXIMUM. FIXING SIZE TO BE EQUIVALENT TO A Ø2.2mm STEEL NAIL MINIMUM.

PRODUCT NO:	ESS Sliding Window (52mm)	DATE:	11/01/08
DRAWING NO:	PD214-05-08	ISSUE:	B
DRAWN:	DJH	SCALE:	1:2

Suncoast Windows & Doors Pty Ltd ABN 78010409819 © 2008 All rights reserved

WEATHERBOARD - JAMB DETAIL

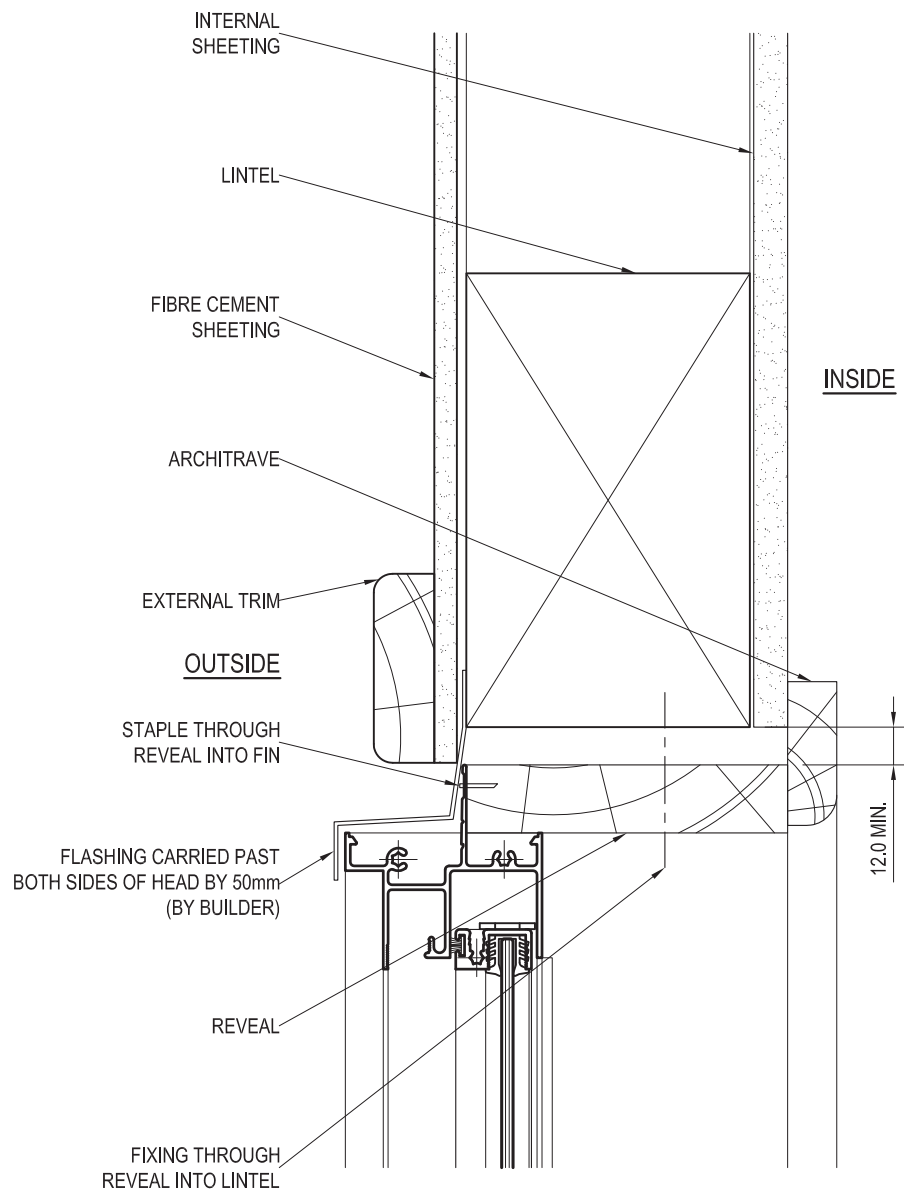


FIXINGS: UP TO AND INCLUDING SITE CLASSIFICATION OF N6, C4 (3.0 kPa) FIXINGS ARE TO BE AT 450mm CENTRE MAXIMUM. FOR SITUATIONS IN EXCESS OF THIS THE FIXINGS ARE TO BE AT 300mm CENTRES MAXIMUM. FIXING SIZE TO BE EQUIVALENT TO A Ø2.2mm STEEL NAIL MINIMUM.

PRODUCT NO:	ESS Sliding Window (52mm)	DATE:	11/01/08
DRAWING NO:	PD214-05-09	ISSUE:	B
DRAWN:	DJH	SCALE:	1:2

Suncoast Windows & Doors Pty Ltd ABN 78010409819 © 2008 All rights reserved

FIBRE CEMENT SHEET - HEAD DETAIL

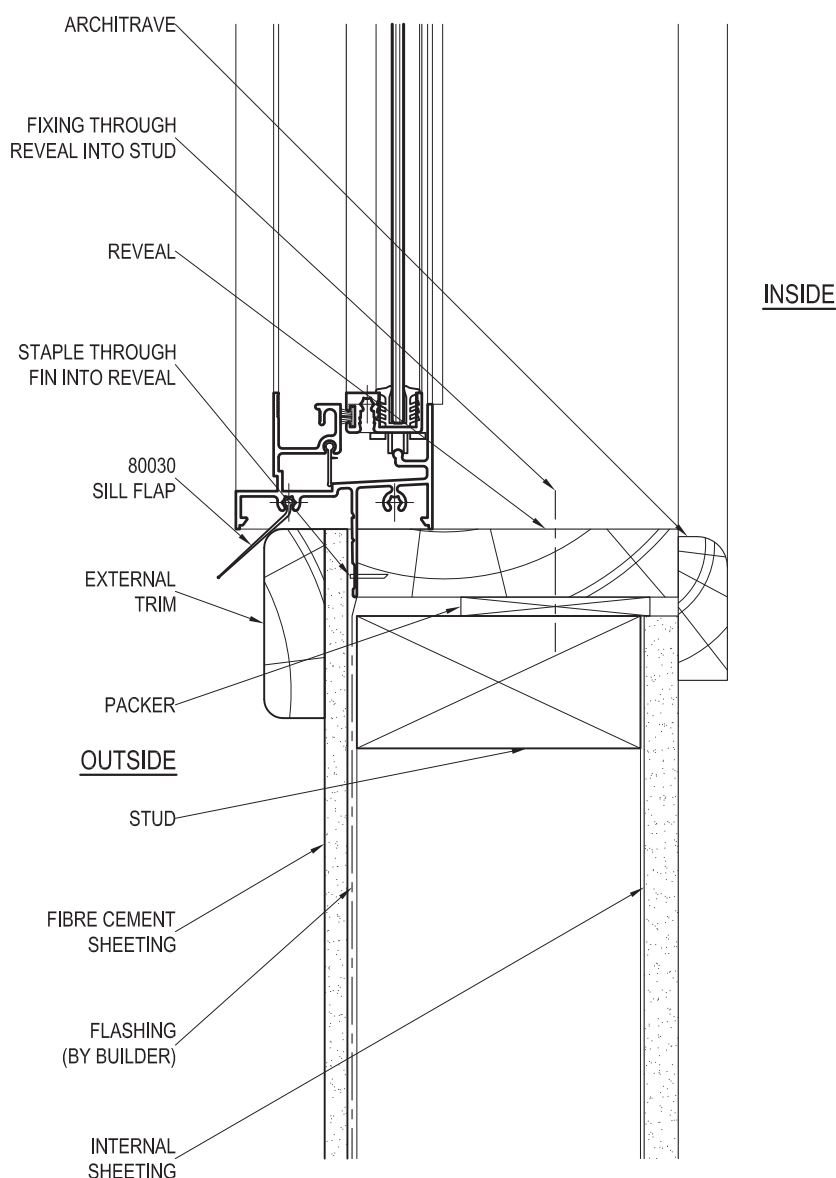


FIXINGS: UP TO AND INCLUDING SITE CLASSIFICATION OF N6, C4 (3.0 kPa) FIXINGS ARE TO BE AT 450mm CENTRE MAXIMUM. FOR SITUATIONS IN EXCESS OF THIS THE FIXINGS ARE TO BE AT 300mm CENTRES MAXIMUM. FIXING SIZE TO BE EQUIVALENT TO A Ø2.2mm STEEL NAIL MINIMUM.

PRODUCT NO:	ESS Sliding Window (52mm)	DATE:	11/01/08
DRAWING NO:	PD214-05-10	ISSUE:	B
DRAWN:	DJH	SCALE:	1:2

Suncoast Windows & Doors Pty Ltd ABN 78010409819 © 2008 All rights reserved

FIBRE CEMENT SHEET - SILL DETAIL

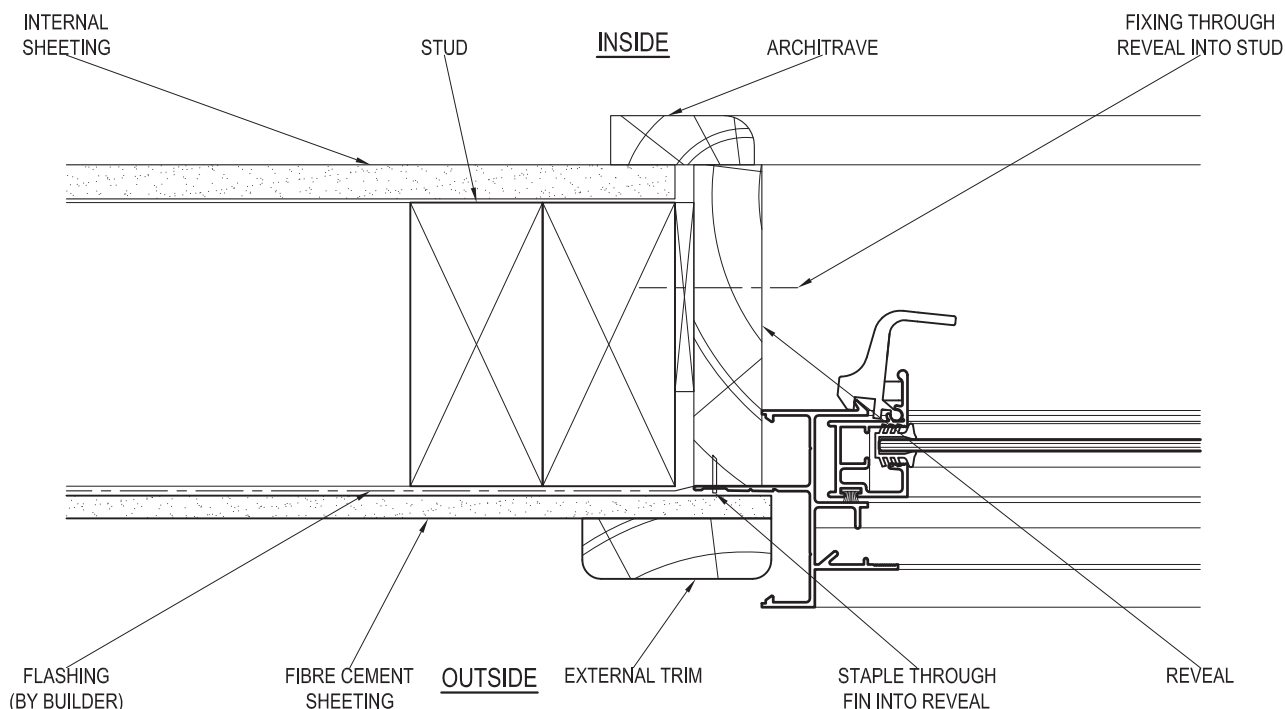


FIXINGS: UP TO AND INCLUDING SITE CLASSIFICATION OF N6, C4 (3.0 kPa) FIXINGS ARE TO BE AT 450mm CENTRE MAXIMUM. FOR SITUATIONS IN EXCESS OF THIS THE FIXINGS ARE TO BE AT 300mm CENTRES MAXIMUM. FIXING SIZE TO BE EQUIVALENT TO A Ø2.2mm STEEL NAIL MINIMUM.

PRODUCT NO:	ESS Sliding Window (52mm)	DATE:	11/01/08
DRAWING NO:	PD214-05-11	ISSUE:	B
DRAWN:	DJH	SCALE:	1:2

Suncoast Windows & Doors Pty Ltd ABN 78010409819 © 2008 All rights reserved

FIBRE CEMENT SHEET - JAMB DETAIL



FIXINGS: UP TO AND INCLUDING SITE CLASSIFICATION OF N6, C4 (3.0 kPa) FIXINGS ARE TO BE AT 450mm CENTRE MAXIMUM. FOR SITUATIONS IN EXCESS OF THIS THE FIXINGS ARE TO BE AT 300mm CENTRES MAXIMUM. FIXING SIZE TO BE EQUIVALENT TO A Ø2.2mm STEEL NAIL MINIMUM.

PRODUCT NO: ESS Sliding Window (52mm)

DATE: 11/01/08

DRAWING NO: PD214-05-12

ISSUE: B

DRAWN: DJH

SCALE: 1:2

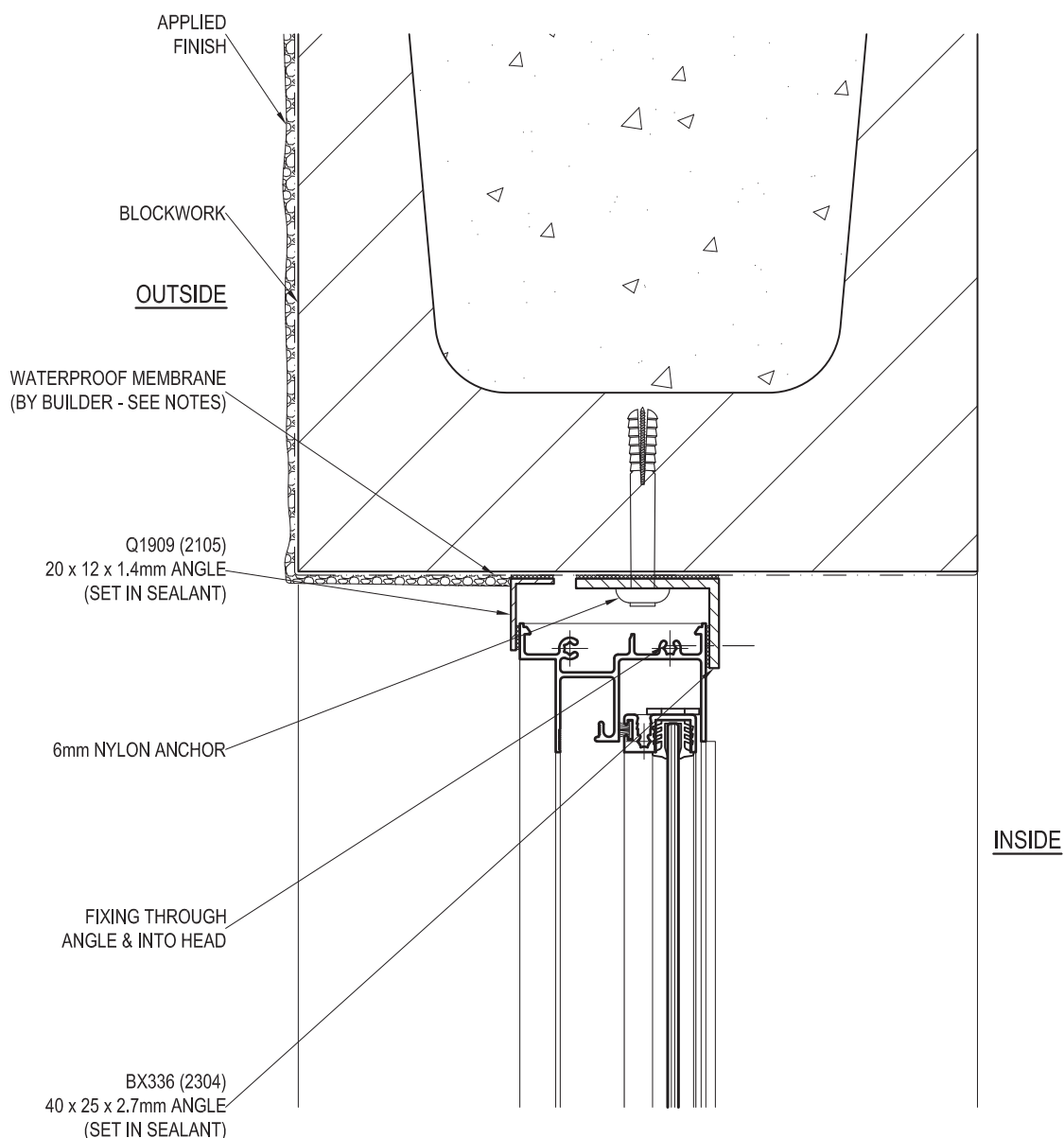
Suncoast Windows & Doors Pty Ltd ABN 78010409819 © 2008 All rights reserved



**SUNCOAST
WINDOWS**

Quality . Style . Innovation

BLOCKWORK - HEAD DETAIL



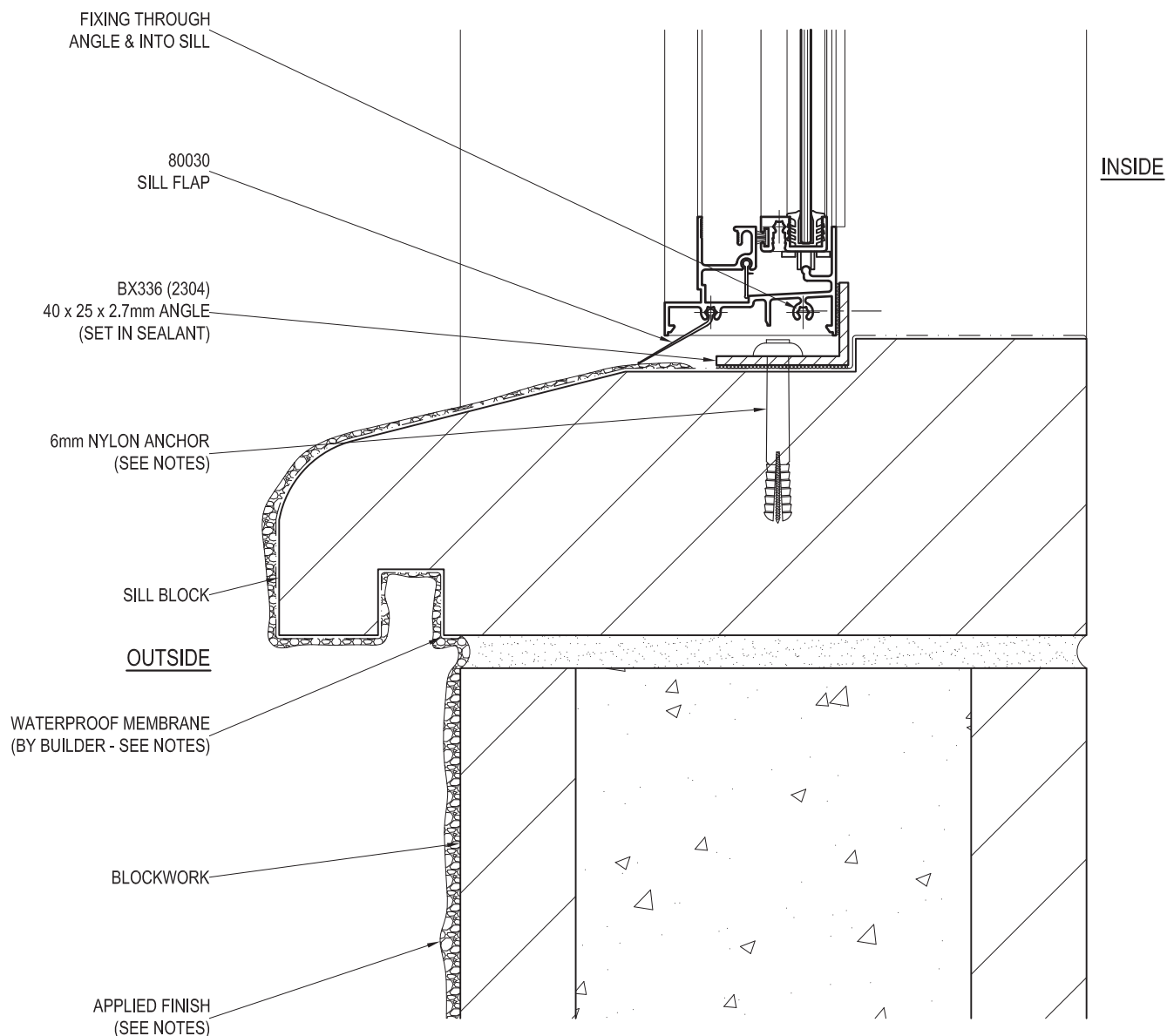
NOTE: SURFACE OF BLOCKS TO DOOR / WINDOW OPENING MUST BE TANKED WITH A SUITABLE SEALER TO PREVENT INGRESS OF MOISTURE. ENSURE MEMBRANE IS COMPATIBLE WITH A 1 PART POLYURETHANE SEALANT E.G. SIKAFLEX PRO 2HP.

FIXINGS: UP TO AND INCLUDING SITE CLASSIFICATION OF N6, C4 (3.0 kPa) FIXINGS ARE TO BE AT 450mm CENTRE MAXIMUM. FOR SITUATIONS IN EXCESS OF THIS THE FIXINGS ARE TO BE AT 300mm CENTRES MAXIMUM. FIXING SIZE TO BE EQUIVALENT TO A Ø2.2mm STEEL NAIL MINIMUM.

PRODUCT NO:	ESS Sliding Window (52mm)	DATE:	11/01/08
DRAWING NO:	PD214-05-13	ISSUE:	B
DRAWN:	DJH	SCALE:	1:2

Suncoast Windows & Doors Pty Ltd ABN 78010409819 © 2008 All rights reserved

BLOCKWORK - SILL DETAIL (USING SILL BLOCK)



NOTE: ENSURE THAT ANY APPLIED FINISH DOES NOT RESTRICT DRAINAGE FROM UNDER THE SILL. SEAL COAT MUST OVERLAP END OF APPLIED FINISH TO SILL TANKING.

SURFACE OF BLOCKS TO DOOR / WINDOW OPENING MUST BE TANKED WITH A SUITABLE SEALER TO PREVENT INGRESS OF MOISTURE. ENSURE MEMBRANE IS COMPATIBLE WITH A 1 PART POLYURETHANE SEALANT E.G. SIKAFLEX PRO 2HP.

FIXING HOLES TO SILLS MUST BE FILLED WITH SEALANT PRIOR TO INSERTING FASTENERS TO RESTORE WATERPROOFING MEMBRANE. HEAD OF FASTENERS TO SILLS SHOULD BE SEALED OVER.

FIXINGS: UP TO AND INCLUDING SITE CLASSIFICATION OF N6, C4 (3.0 kPa) FIXINGS ARE TO BE AT 450mm CENTRE MAXIMUM. FOR SITUATIONS IN EXCESS OF THIS THE FIXINGS ARE TO BE AT 300mm CENTRES MAXIMUM. FIXING SIZE TO BE EQUIVALENT TO A Ø2.2mm STEEL NAIL MINIMUM.

PRODUCT NO: ESS Sliding Window (52mm)

DATE: 11/01/08

DRAWING NO: PD214-05-14

ISSUE: B

DRAWN: DJH

SCALE: 1:2

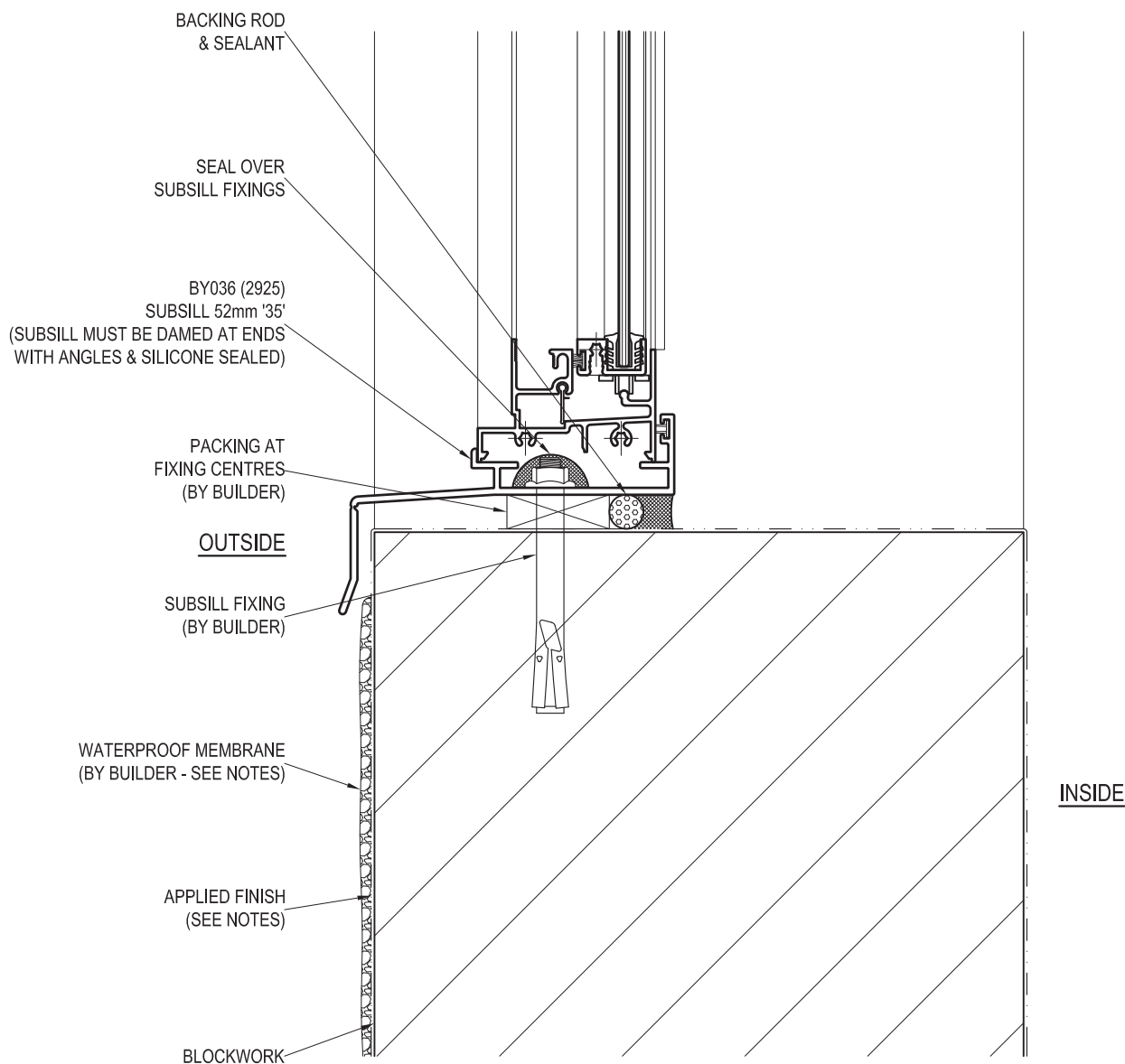
Suncoast Windows & Doors Pty Ltd ABN 78010409819 © 2008 All rights reserved



**SUNCOAST
WINDOWS**

Quality . Style . Innovation

BLOCKWORK - SILL DETAIL USING SUBSILL (WHEN HIGH PERFORMANCE REQUIRED)



NOTE: ENSURE THAT ANY APPLIED FINISH DOES NOT RESTRICT DRAINAGE FROM UNDER THE SILL. SEAL COAT MUST OVERLAP END OF APPLIED FINISH TO SILL TANKING.

SURFACE OF BLOCKS TO DOOR / WINDOW OPENING MUST BE TANKED WITH A SUITABLE SEALER TO PREVENT INGRESS OF MOISTURE. ENSURE THAT THE SURFACES TO BE SEALED ARE SOUND, CLEAN, DRY AND FREE FROM ANY SURFACE CONTAMINANTS.

FIXING HOLES TO SILLS MUST BE FILLED WITH SEALANT PRIOR TO INSERTING FASTENERS TO RESTORE WATERPROOFING MEMBRANE. HEAD OF FASTENERS TO SILLS SHOULD BE SEALED OVER

FIXINGS: UP TO AND INCLUDING SITE CLASSIFICATION OF N6, C4 (3.0 kPa) FIXINGS ARE TO BE AT 450mm CENTRE MAXIMUM. FOR SITUATIONS IN EXCESS OF THIS THE FIXINGS ARE TO BE AT 300mm CENTRES MAXIMUM. FIXING SIZE TO BE EQUIVALENT TO A Ø2.2mm STEEL NAIL MINIMUM.

PRODUCT NO: ESS Sliding Window (52mm)

DATE: 24/11/08

DRAWING NO: PD214-05-15

ISSUE: C

DRAWN: DJH

SCALE: 1:2

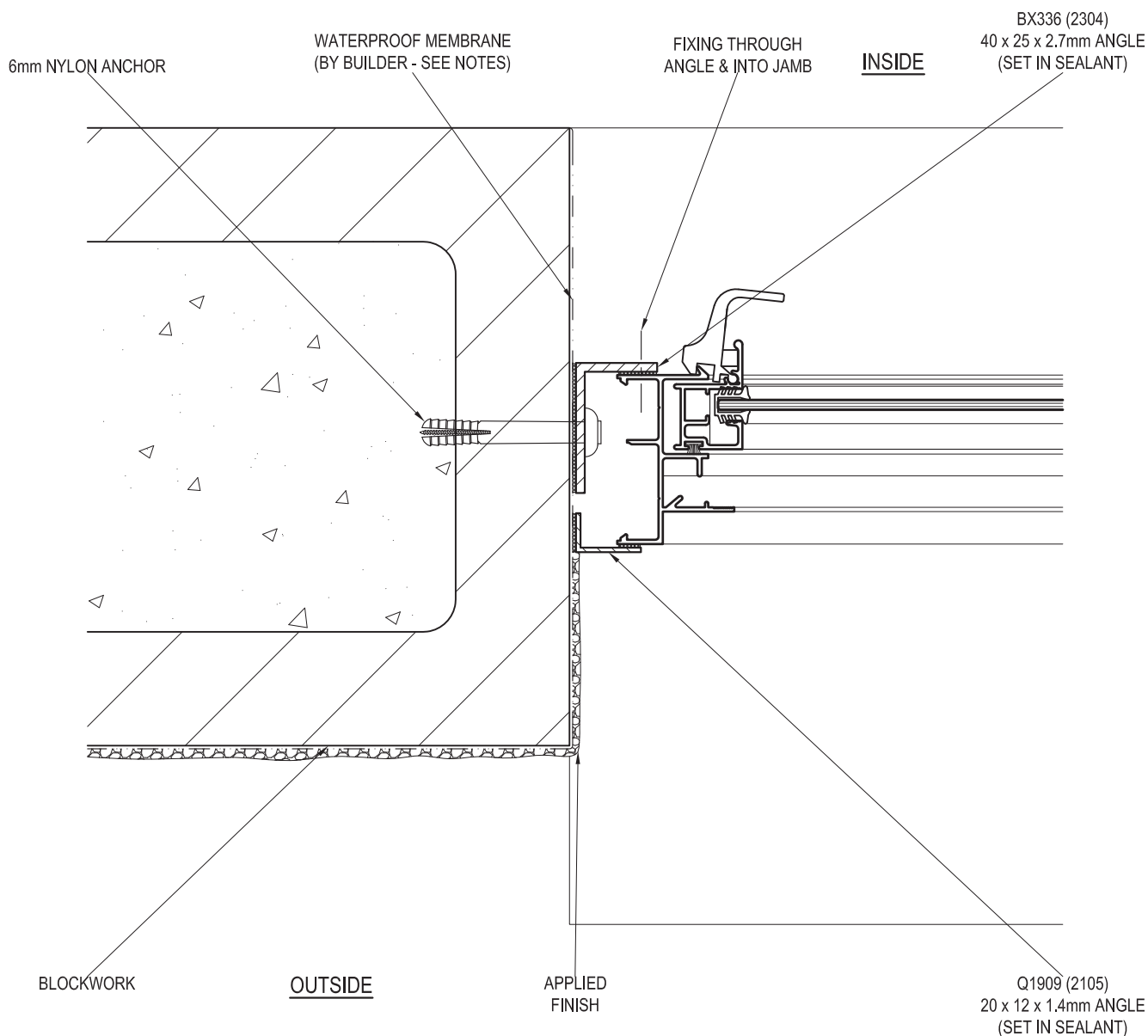
Suncoast Windows & Doors Pty Ltd ABN 78010409819 © 2008 All rights reserved



**SUNCOAST
WINDOWS**

Quality . Style . Innovation

BLOCKWORK - JAMB DETAIL



NOTE: SURFACE OF BLOCKS TO DOOR / WINDOW OPENING MUST BE TANKED WITH A SUITABLE SEALER TO PREVENT INGRESS OF MOISTURE. ENSURE MEMBRANE IS COMPATIBLE WITH A 1 PART POLYURETHANE SEALANT E.G. SIKAFLEX PRO 2HP.

FIXINGS: UP TO AND INCLUDING SITE CLASSIFICATION OF N6, C4 (3.0 kPa) FIXINGS ARE TO BE AT 450mm CENTRE MAXIMUM. FOR SITUATIONS IN EXCESS OF THIS THE FIXINGS ARE TO BE AT 300mm CENTRES MAXIMUM. FIXING SIZE TO BE EQUIVALENT TO A Ø2.2mm STEEL NAIL MINIMUM.

PRODUCT NO: ESS Sliding Window (52mm)

DATE: 11/01/08

DRAWING NO: PD214-05-16

ISSUE: B

DRAWN: DJH

SCALE: 1:2

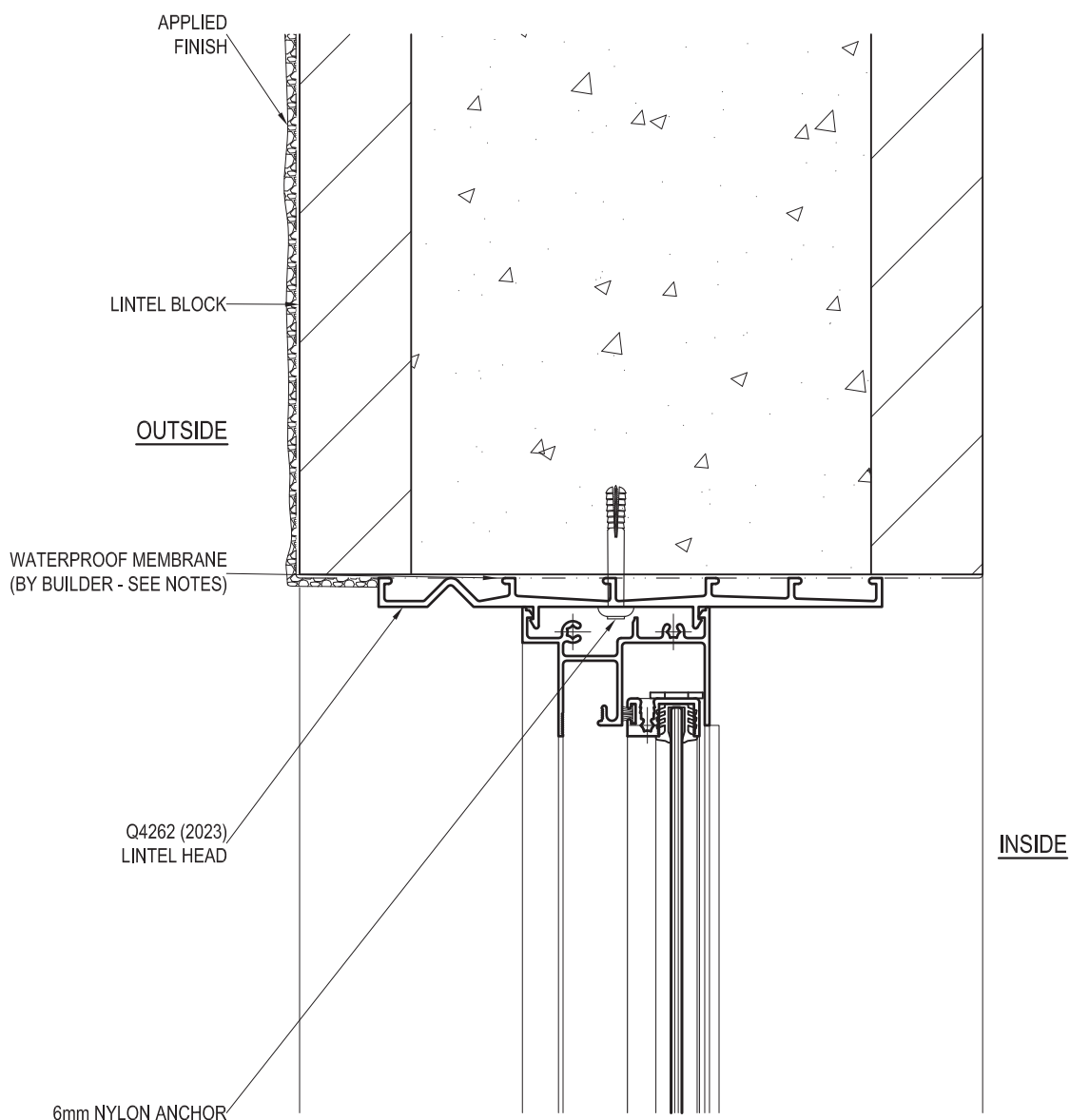
Suncoast Windows & Doors Pty Ltd ABN 78010409819 © 2008 All rights reserved



**SUNCOAST
WINDOWS**

Quality . Style . Innovation

BLOCKWORK WITH Q4262 (2023) LINTEL HEAD - HEAD DETAIL



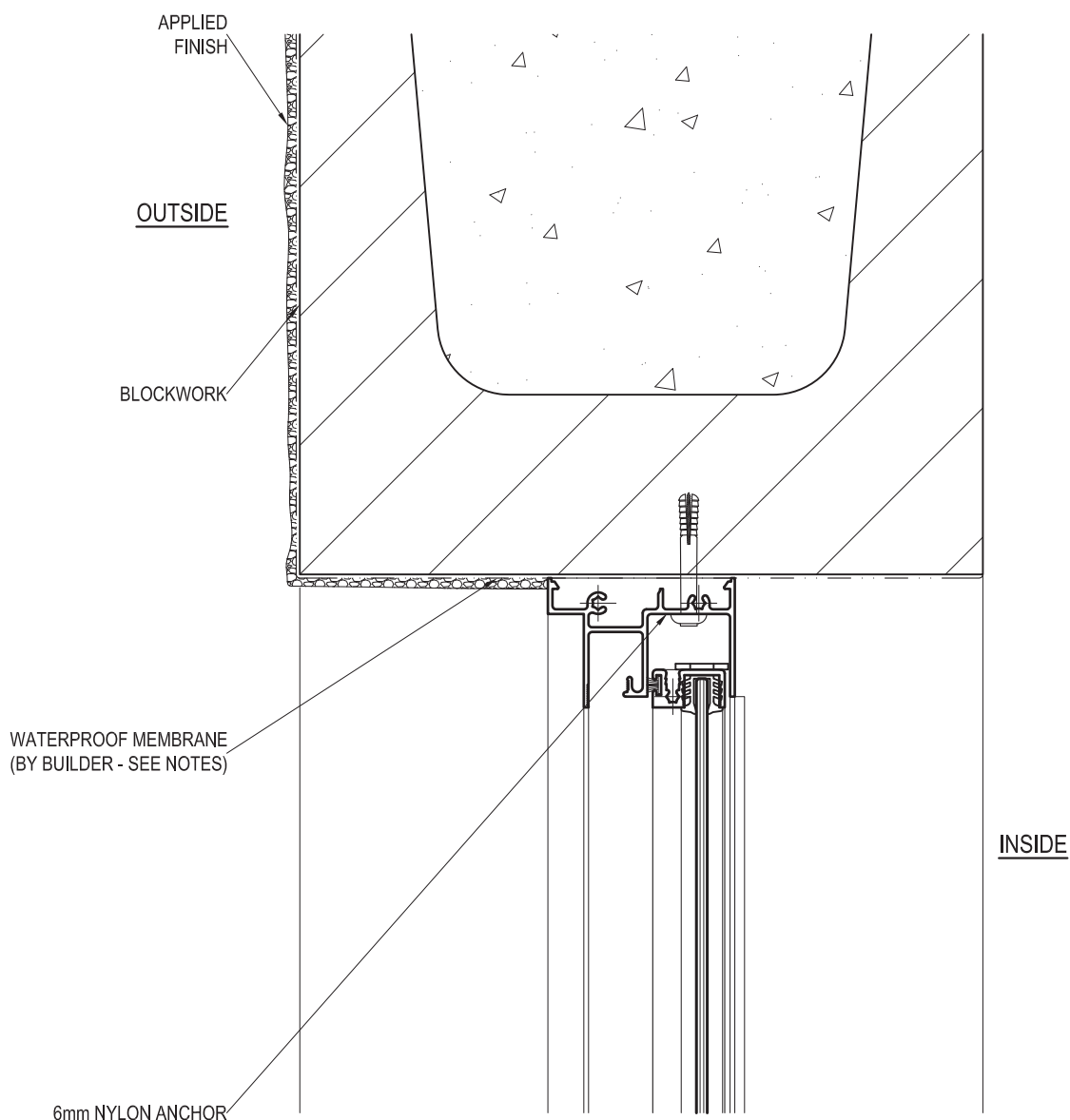
NOTE: SURFACE OF BLOCKS TO DOOR / WINDOW OPENING MUST BE TANKED WITH A SUITABLE SEALER TO PREVENT INGRESS OF MOISTURE. ENSURE MEMBRANE IS COMPATIBLE WITH A 1 PART POLYURETHANE SEALANT E.G. SIKAFLEX PRO 2HP.

FIXINGS: UP TO AND INCLUDING SITE CLASSIFICATION OF N6, C4 (3.0 kPa) FIXINGS ARE TO BE AT 450mm CENTRE MAXIMUM. FOR SITUATIONS IN EXCESS OF THIS THE FIXINGS ARE TO BE AT 300mm CENTRES MAXIMUM. FIXING SIZE TO BE EQUIVALENT TO A Ø2.2mm STEEL NAIL MINIMUM.

PRODUCT NO:	ESS Sliding Window (52mm)	DATE:	11/01/08
DRAWING NO:	PD214-05-17	ISSUE:	B
DRAWN:	DJH	SCALE:	1:2

Suncoast Windows & Doors Pty Ltd ABN 78010409819 © 2008 All rights reserved

BLOCKWORK (DIRECT FIXING) - HEAD DETAIL



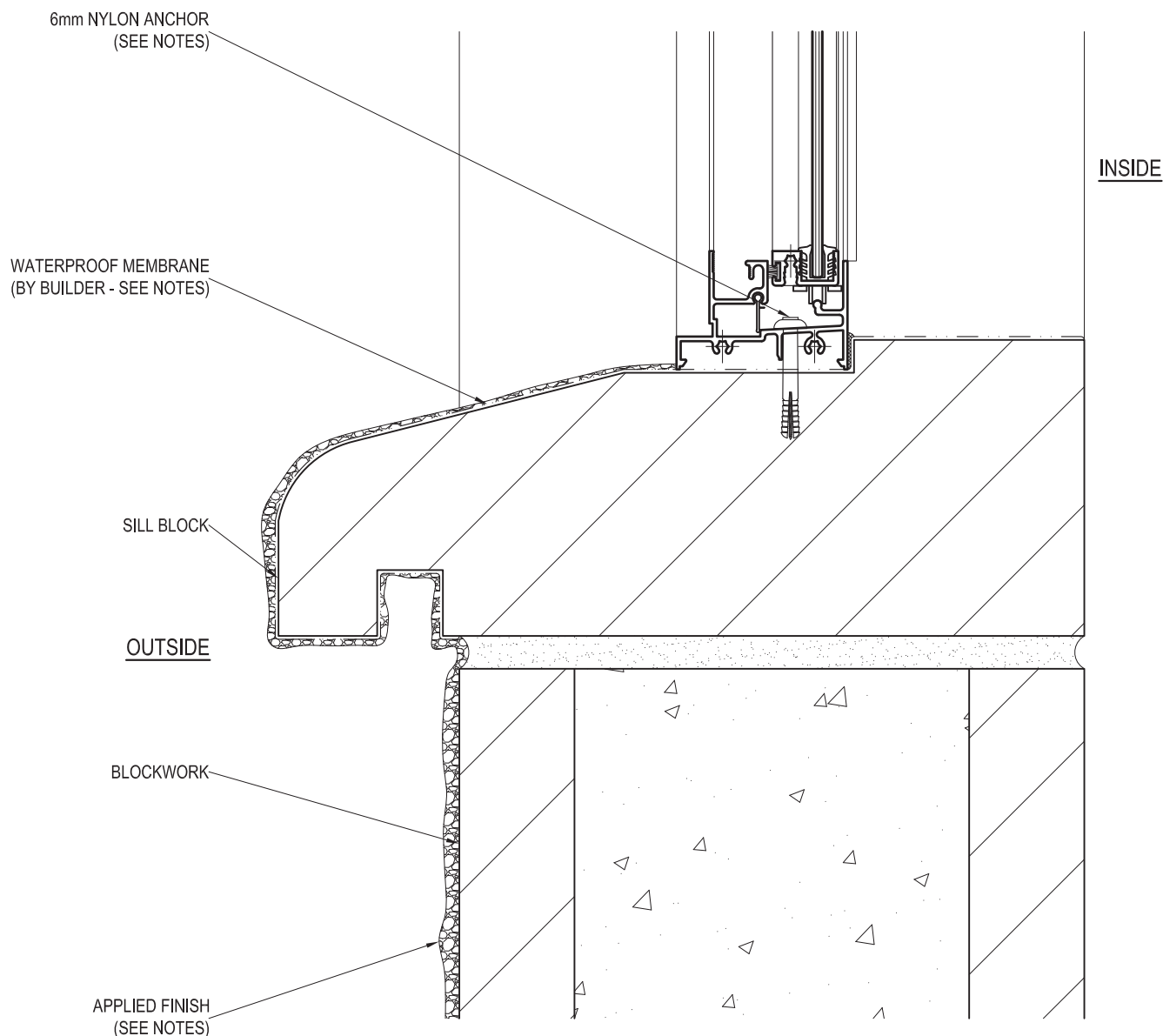
NOTE: SURFACE OF BLOCKS TO DOOR / WINDOW OPENING MUST BE TANKED WITH A SUITABLE SEALER TO PREVENT INGRESS OF MOISTURE. ENSURE MEMBRANE IS COMPATIBLE WITH A 1 PART POLYURETHANE SEALANT E.G. SIKAFLEX PRO 2HP.

FIXINGS: UP TO AND INCLUDING SITE CLASSIFICATION OF N6, C4 (3.0 kPa) FIXINGS ARE TO BE AT 450mm CENTRE MAXIMUM. FOR SITUATIONS IN EXCESS OF THIS THE FIXINGS ARE TO BE AT 300mm CENTRES MAXIMUM. FIXING SIZE TO BE EQUIVALENT TO A Ø2.2mm STEEL NAIL MINIMUM.

PRODUCT NO:	ESS Sliding Window (52mm)	DATE:	11/01/08
DRAWING NO:	PD214-05-18	ISSUE:	B
DRAWN:	DJH	SCALE:	1:2

Suncoast Windows & Doors Pty Ltd ABN 78010409819 © 2008 All rights reserved

BLOCKWORK (DIRECT FIXING)- SILL DETAIL (USING SILL BLOCK)



NOTE: ENSURE THAT ANY APPLIED FINISH DOES NOT RESTRICT DRAINAGE FROM UNDER THE SILL. SEAL COAT MUST OVERLAP END OF APPLIED FINISH TO SILL TANKING.

SURFACE OF BLOCKS TO DOOR / WINDOW OPENING MUST BE TANKED WITH A SUITABLE SEALER TO PREVENT INGRESS OF MOISTURE. ENSURE MEMBRANE IS COMPATIBLE WITH A 1 PART POLYURETHANE SEALANT E.G. SIKAFLEX PRO 2HP.

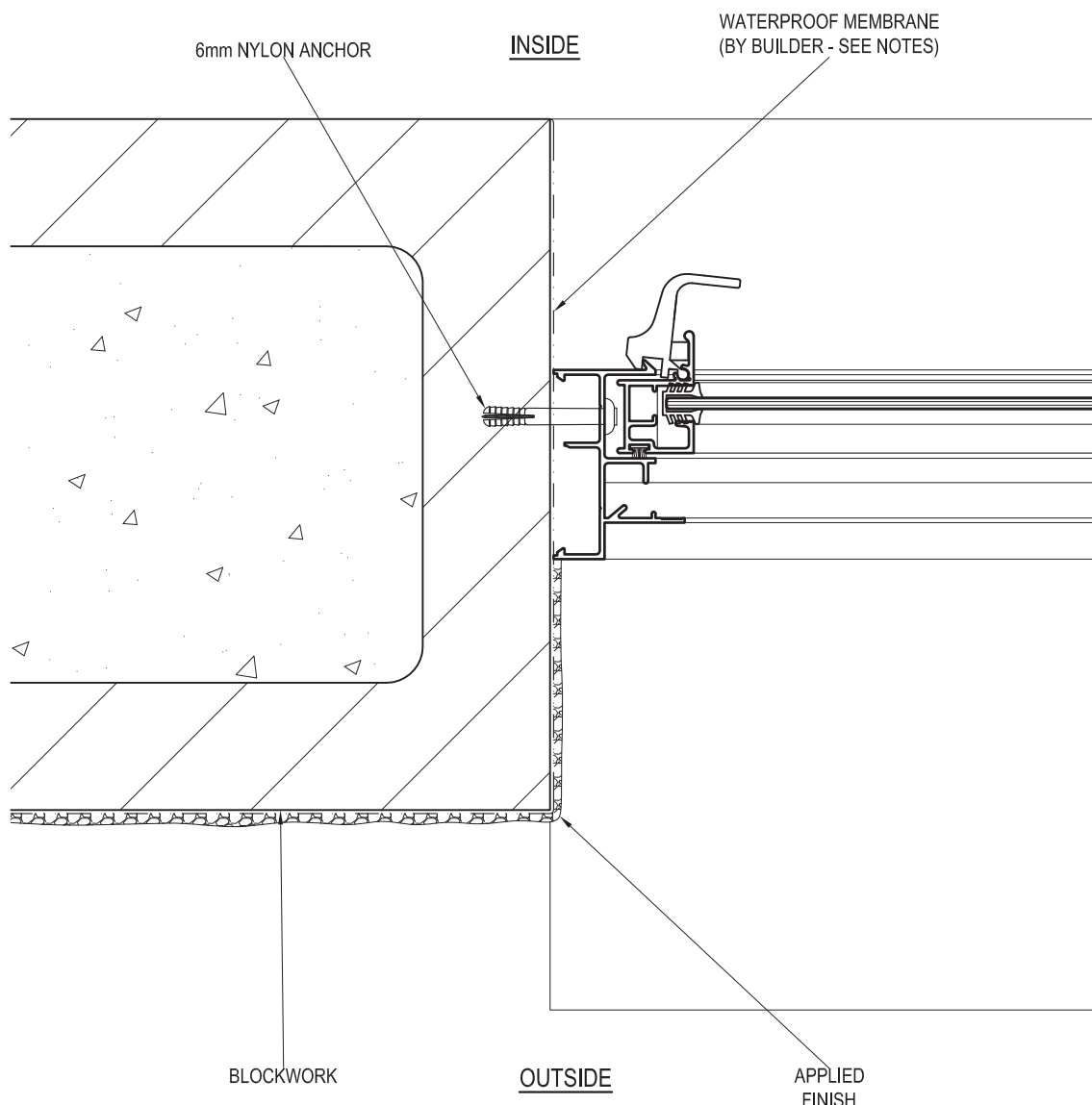
FIXING HOLES TO SILLS MUST BE FILLED WITH SEALANT PRIOR TO INSERTING FASTENERS TO RESTORE WATERPROOFING MEMBRANE. HEAD OF FASTENERS TO SILLS SHOULD BE SEALED OVER.

FIXINGS: UP TO AND INCLUDING SITE CLASSIFICATION OF N6, C4 (3.0 kPa) FIXINGS ARE TO BE AT 450mm CENTRE MAXIMUM. FOR SITUATIONS IN EXCESS OF THIS THE FIXINGS ARE TO BE AT 300mm CENTRES MAXIMUM. FIXING SIZE TO BE EQUIVALENT TO A Ø2.2mm STEEL NAIL MINIMUM.

PRODUCT NO:	ESS Sliding Window (52mm)	DATE:	11/01/08
DRAWING NO:	PD214-05-19	ISSUE:	B
DRAWN:	DJH	SCALE:	1:2

Suncoast Windows & Doors Pty Ltd ABN 78010409819 © 2008 All rights reserved

BLOCKWORK (DIRECT FIXING) - JAMB DETAIL



NOTE: SURFACE OF BLOCKS TO DOOR / WINDOW OPENING MUST BE TANKED WITH A SUITABLE SEALER TO PREVENT INGRESS OF MOISTURE. ENSURE MEMBRANE IS COMPATIBLE WITH A 1 PART POLYURETHANE SEALANT E.G. SIKAFLEX PRO 2HP.

FIXINGS: UP TO AND INCLUDING SITE CLASSIFICATION OF N6, C4 (3.0 kPa) FIXINGS ARE TO BE AT 450mm CENTRE MAXIMUM. FOR SITUATIONS IN EXCESS OF THIS THE FIXINGS ARE TO BE AT 300mm CENTRES MAXIMUM. FIXING SIZE TO BE EQUIVALENT TO A Ø2.2mm STEEL NAIL MINIMUM.

PRODUCT NO: ESS Sliding Window (52mm)

DATE: 11/01/08

DRAWING NO: PD214-05-20

ISSUE: B

DRAWN: DJH

SCALE: 1:2

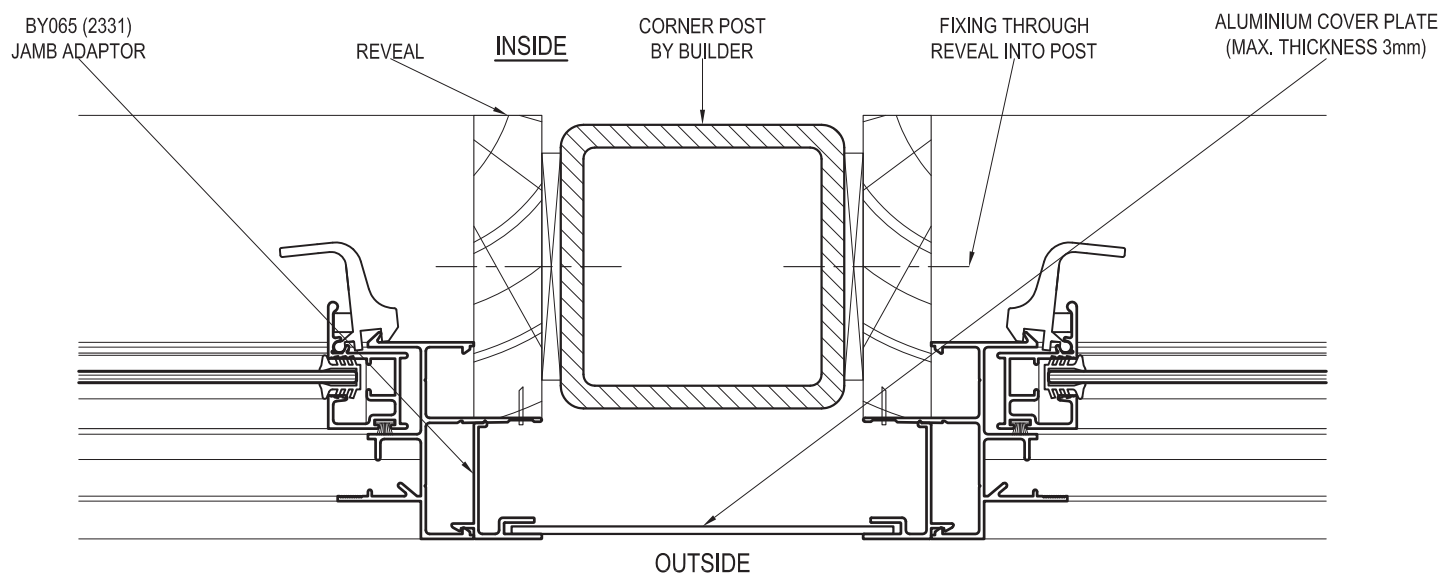
Suncoast Windows & Doors Pty Ltd ABN 78010409819 © 2008 All rights reserved



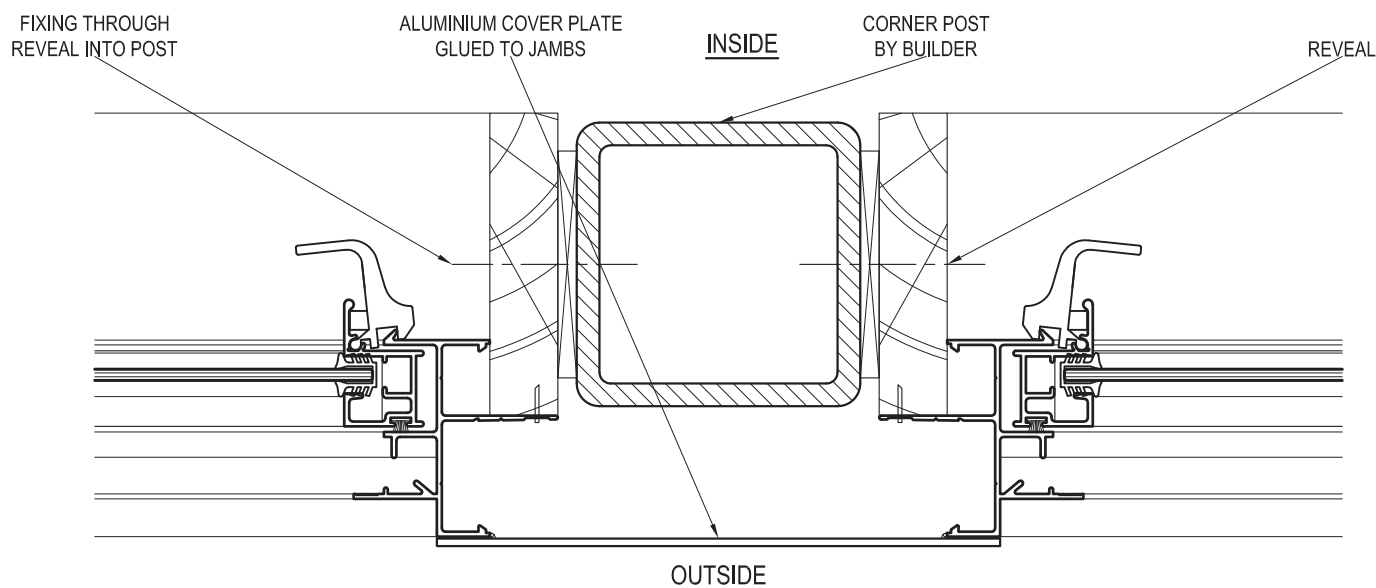
**SUNCOAST
WINDOWS**

Quality . Style . Innovation

STRUCTURAL POST COVERS USING BY065 (2331) JAMB ADAPTOR



STRUCTURAL POST COVERS USING ADHESIVES



PRODUCT NO: ESS Sliding Window (52mm)

DATE: 11/01/08

DRAWING NO: PD214-05-21

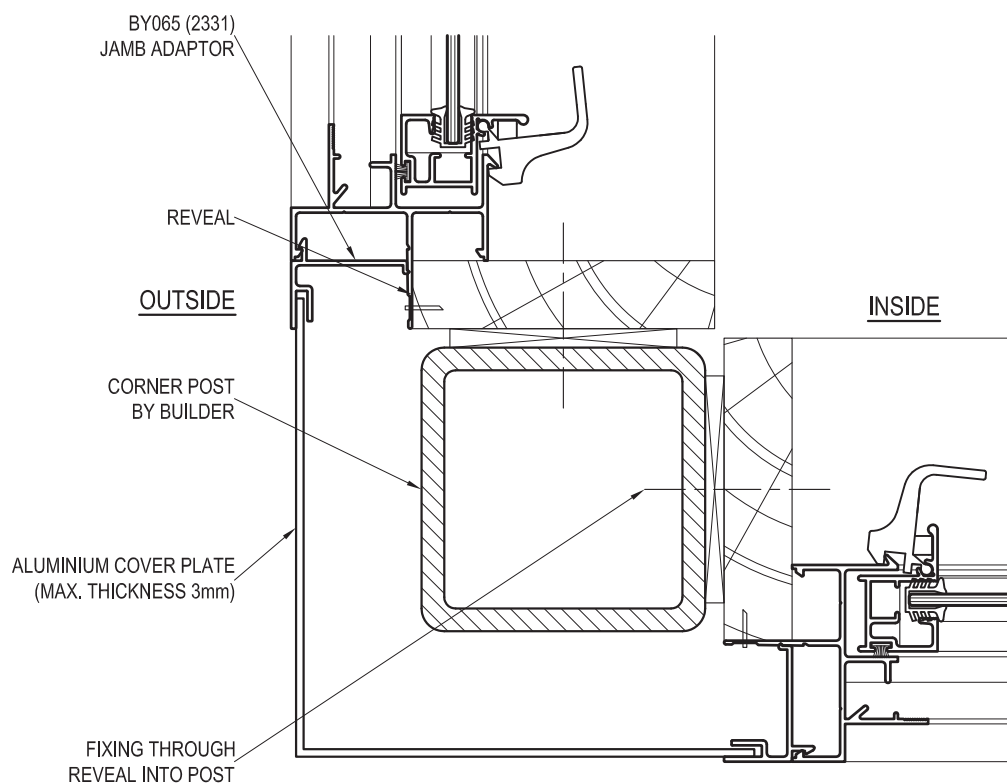
ISSUE: B

DRAWN: DJH

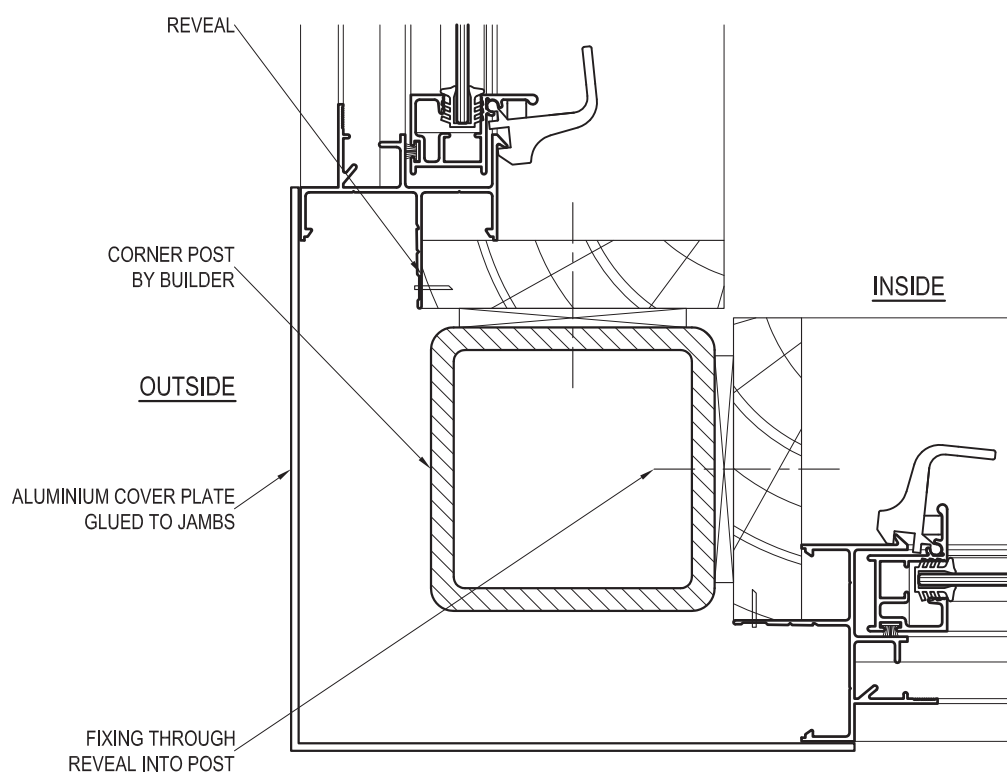
SCALE: 1:2

Suncoast Windows & Doors Pty Ltd ABN 78010409819 © 2008 All rights reserved

90° CORNER POST COVERS USING BY065 (2331) JAMB ADAPTOR



90° CORNER POST COVERS USING ADHESIVES



PRODUCT NO: ESS Sliding Window (52mm)

DATE: 11/01/08

DRAWING NO: PD214-05-22

ISSUE: B

DRAWN: DJH

SCALE: 1:2

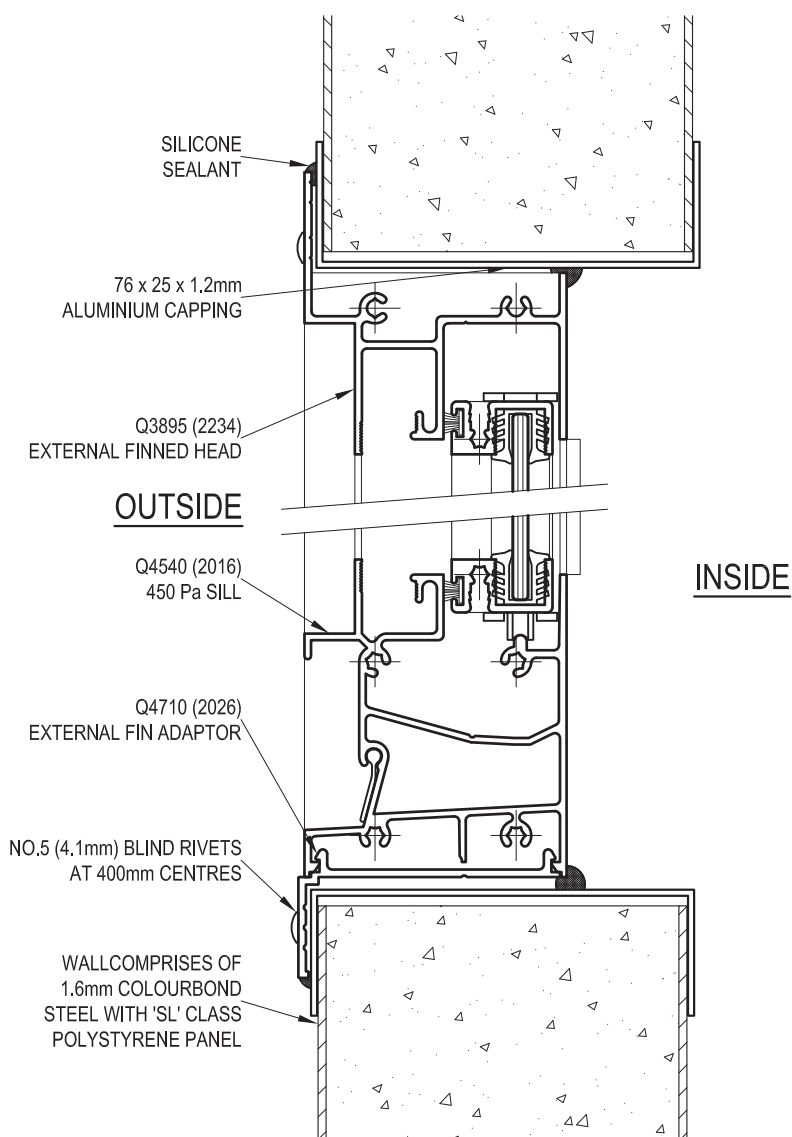
Suncoast Windows & Doors Pty Ltd ABN 78010409819 © 2008 All rights reserved

TYPICAL INSTALLATION - EXTERNAL FINNED FRAMES

THE FOLLOWING DETAIL WAS REQUESTED FROM LICENSEE 'DABSCO':

Q4540 (2016) 450 Pa SILL SHOWN DEFINNED WITH Q4710 (2026) EXTERNAL FIN ADAPTOR,
DETAILS SIMILAR FOR Q3896 (2235) 150 Pa EXTERNAL FINNED SILL.

DETAILS FOR N3894 (2233) EXTERNAL FINNED JAMB SIMILAR TO THAT OF HEAD & SILL SHOWN.

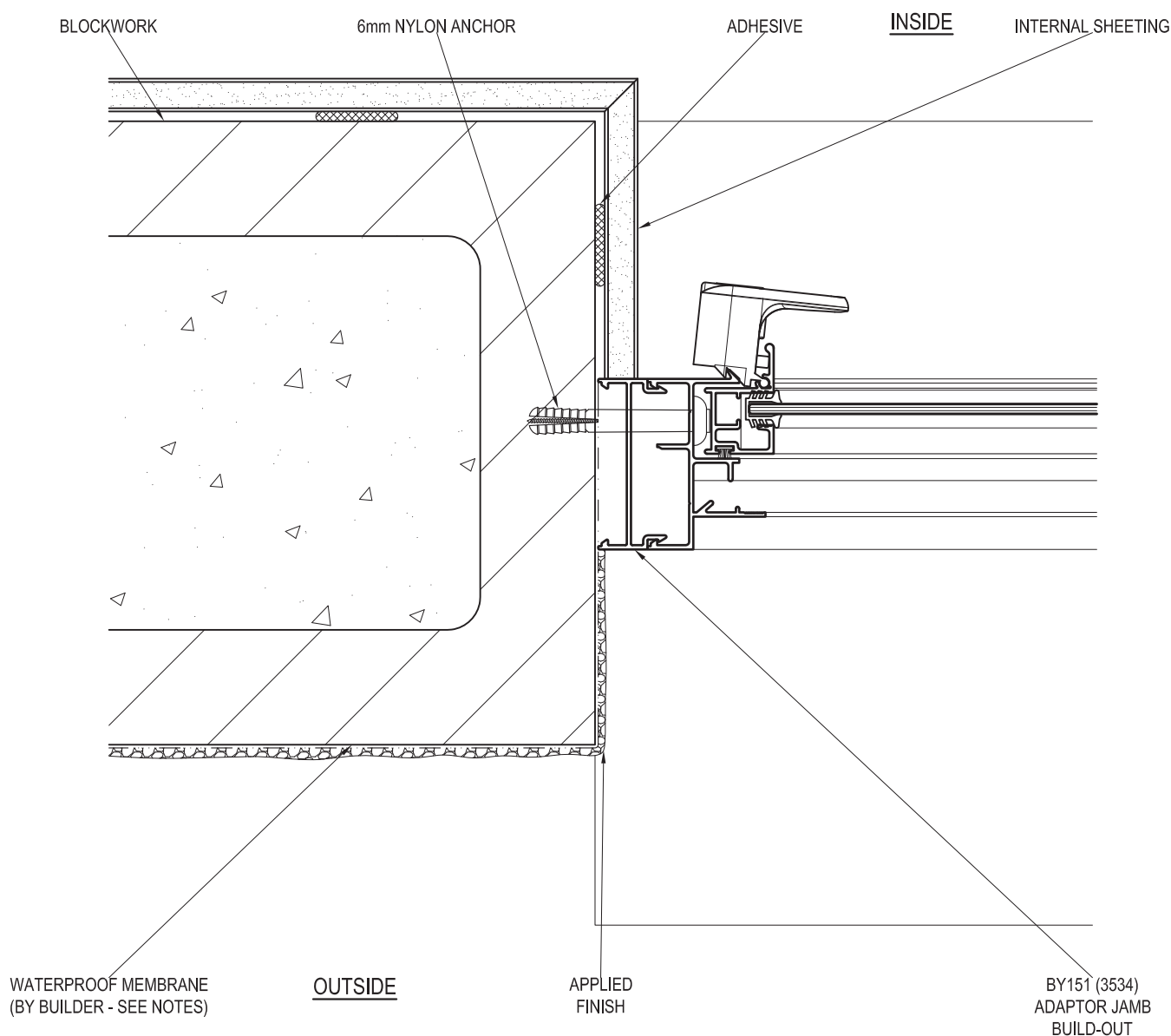


FIXINGS: UP TO AND INCLUDING SITE CLASSIFICATION OF N6, C4 (3.0 kPa) FIXINGS ARE TO BE AT 450mm CENTRE MAXIMUM. FOR SITUATIONS IN EXCESS OF THIS THE FIXINGS ARE TO BE AT 300mm CENTRES MAXIMUM. FIXING SIZE TO BE EQUIVALENT TO A Ø2.2mm STEEL NAIL MINIMUM.

PRODUCT NO:	ESS Sliding Window (52mm)	DATE:	29/08/08
DRAWING NO:	PD214-05-23	ISSUE:	A
DRAWN:	DJH	SCALE:	1:1.5

Suncoast Windows & Doors Pty Ltd ABN 78010409819 © 2008 All rights reserved

BLOCKWORK - JAMB DETAIL USING BY151 (3534) ADAPTOR JAMB BUILD-OUT



NOTE: SURFACE OF BLOCKS TO DOOR / WINDOW OPENING MUST BE TANKED WITH A SUITABLE SEALER TO PREVENT INGRESS OF MOISTURE. ENSURE MEMBRANE IS COMPATIBLE WITH A 1 PART POLYURETHANE SEALANT E.G. SIKAFLEX PRO 2HP.

FIXINGS: UP TO AND INCLUDING SITE CLASSIFICATION OF N6, C4 (3.0 kPa) FIXINGS ARE TO BE AT 450mm CENTRE MAXIMUM. FOR SITUATIONS IN EXCESS OF THIS THE FIXINGS ARE TO BE AT 300mm CENTRES MAXIMUM. FIXING SIZE TO BE EQUIVALENT TO A Ø2.2mm STEEL NAIL MINIMUM.

PRODUCT NO: ESS Sliding Window (52mm)

DATE: 20/06/13

DRAWING NO: PD214-05-24

ISSUE: A

DRAWN: DJH

SCALE: 1:2

Suncoast Windows & Doors Pty Ltd ABN 78010409819 © 2008 All rights reserved



**SUNCOAST
WINDOWS**

Quality . Style . Innovation