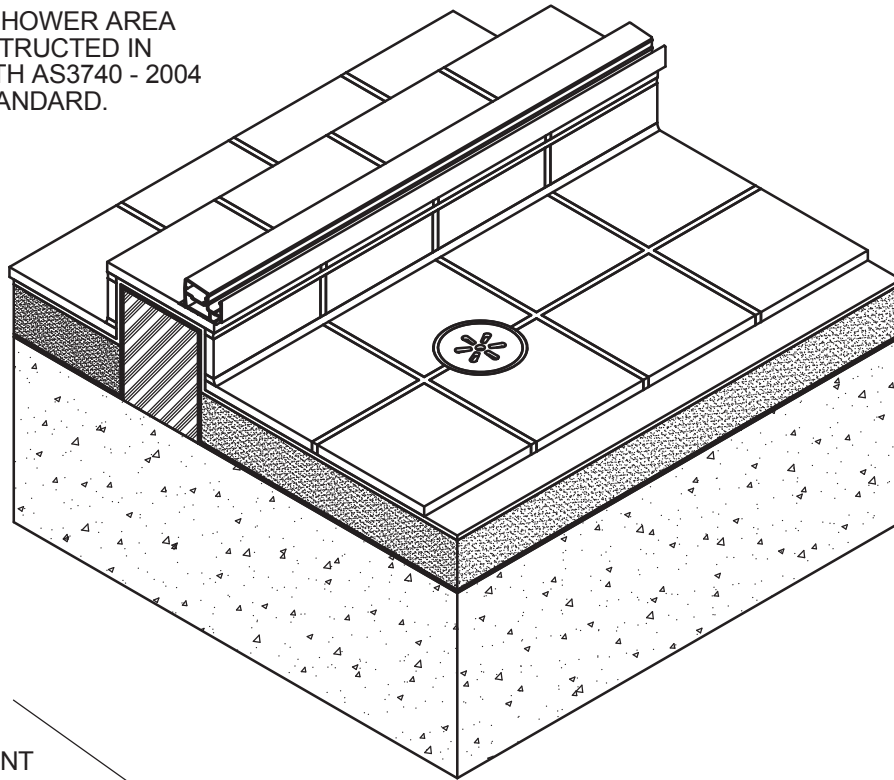


Essential Showerscreen Signature Showerscreen

Installation Details

HOB ON CONCRETE FLOOR CONSTRUCTION

NOTE:
THE BATHROOM/SHOWER AREA
SHOULD BE CONSTRUCTED IN
ACCORDANCE WITH AS3740 - 2004
WATERPROOF STANDARD.



SHOWER SILL
BY SUNCOAST
WINDOWS

FLEXIBLE SEALANT
BY SUNCOAST
WINDOWS

TIMBER MUST NOT
BE USED FOR HOB

7

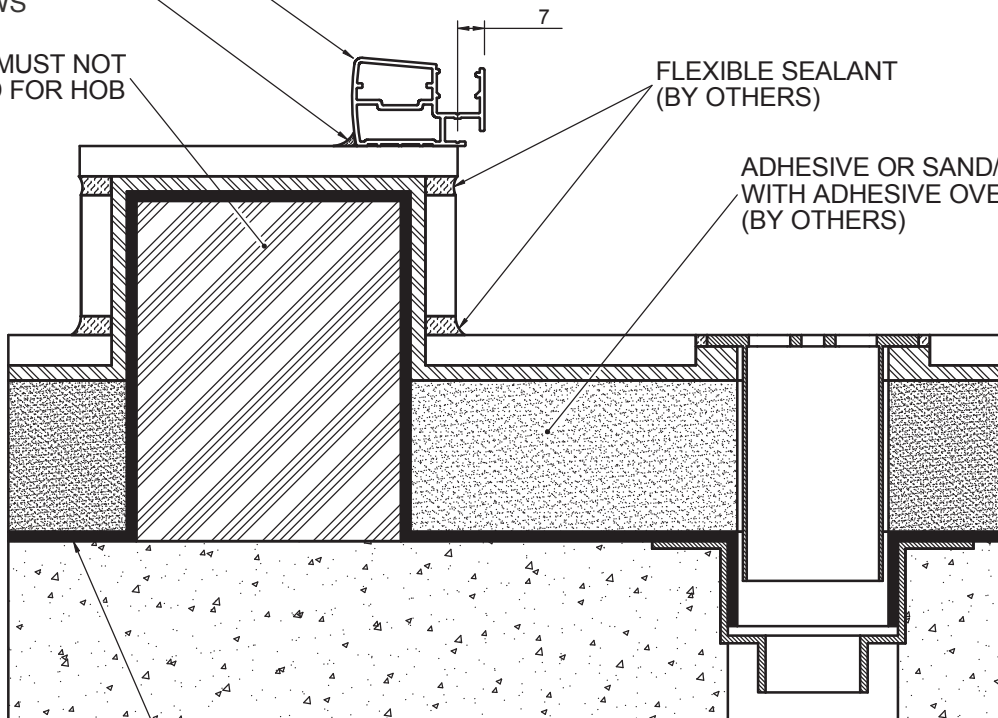
FLEXIBLE SEALANT
(BY OTHERS)

ADHESIVE OR SAND/CEMENT BED
WITH ADHESIVE OVER AS REQUIRED
(BY OTHERS)

TILE ADHESIVE
(BY OTHERS)

WATERPROOF
MEMBRANE
(BY OTHERS)

CONCRETE
(BY OTHERS)



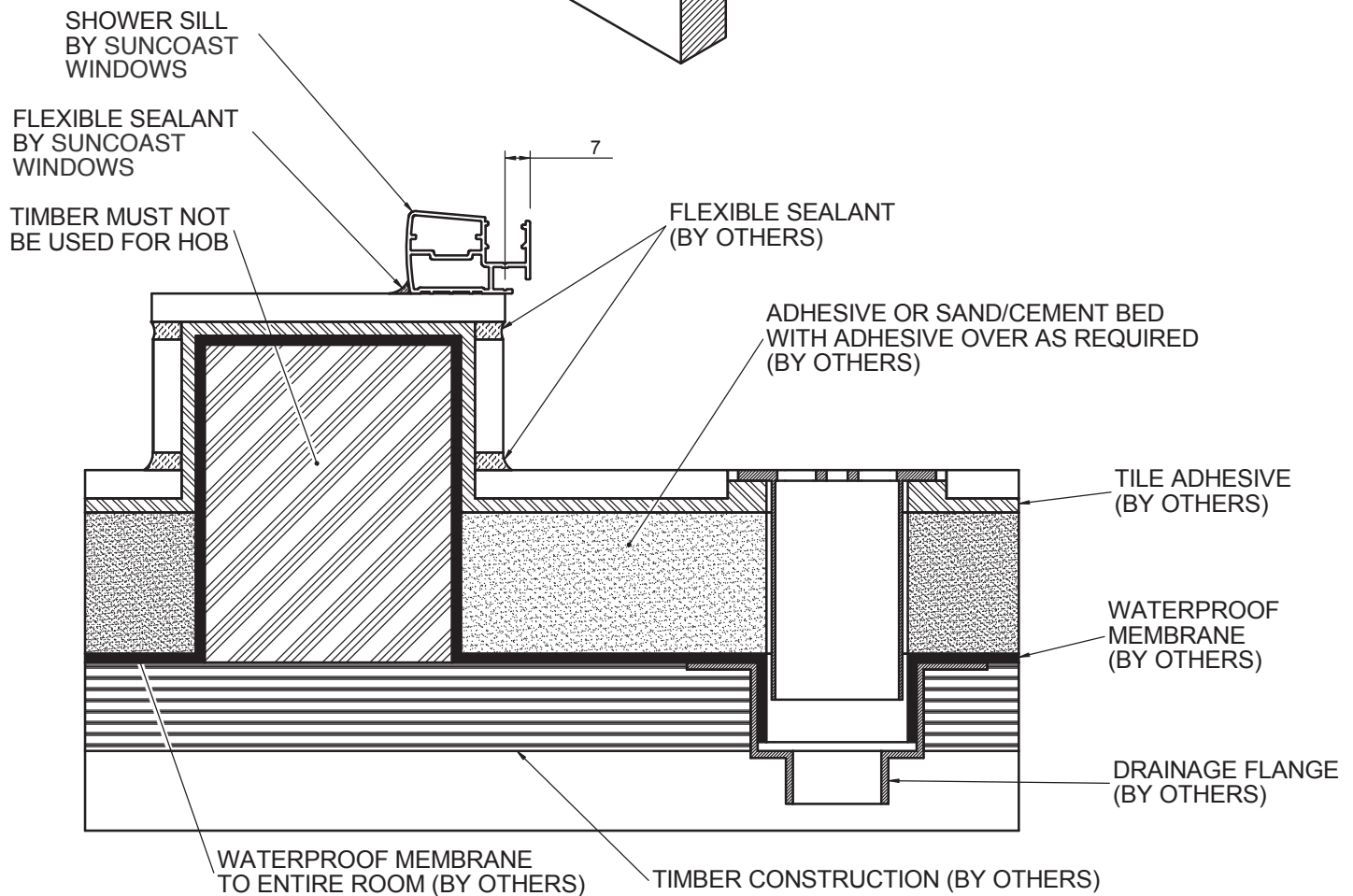
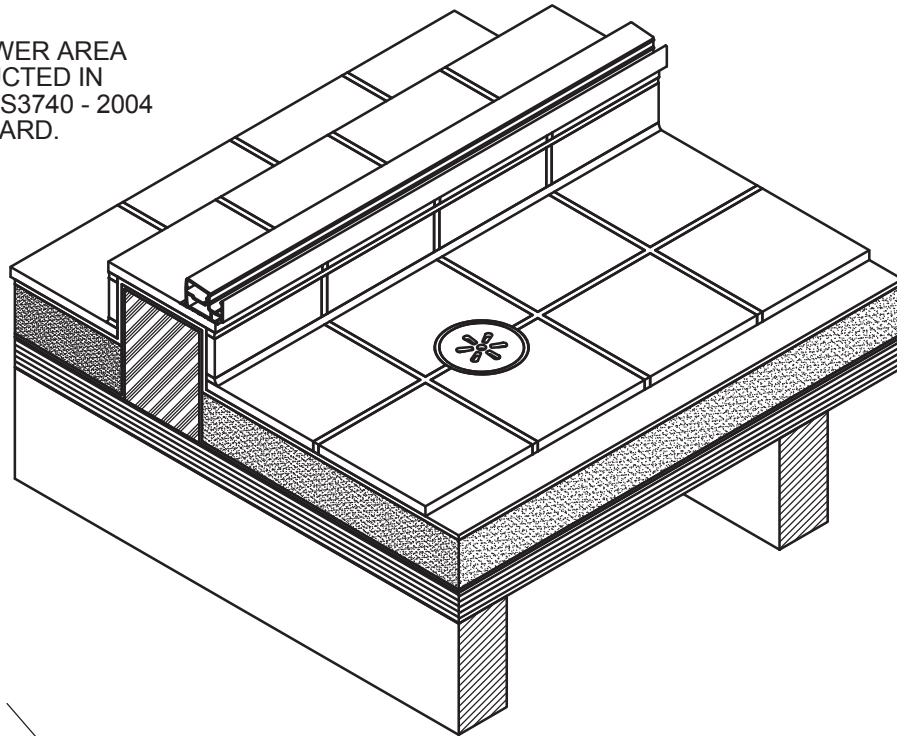
WATERPROOF MEMBRANE
MIN. 50mm PAST HOB

PRODUCT NO: NOOD 400
DRAWING NO: NUDE-SS-02-01
DRAWN: JCF

DATE: 07/07/08
ISSUE: A
SCALE: 1 : 2

HOB ON TIMBER FLOOR CONSTRUCTION

NOTE:
THE BATHROOM/SHOWER AREA
SHOULD BE CONSTRUCTED IN
ACCORDANCE WITH AS3740 - 2004
WATERPROOF STANDARD.

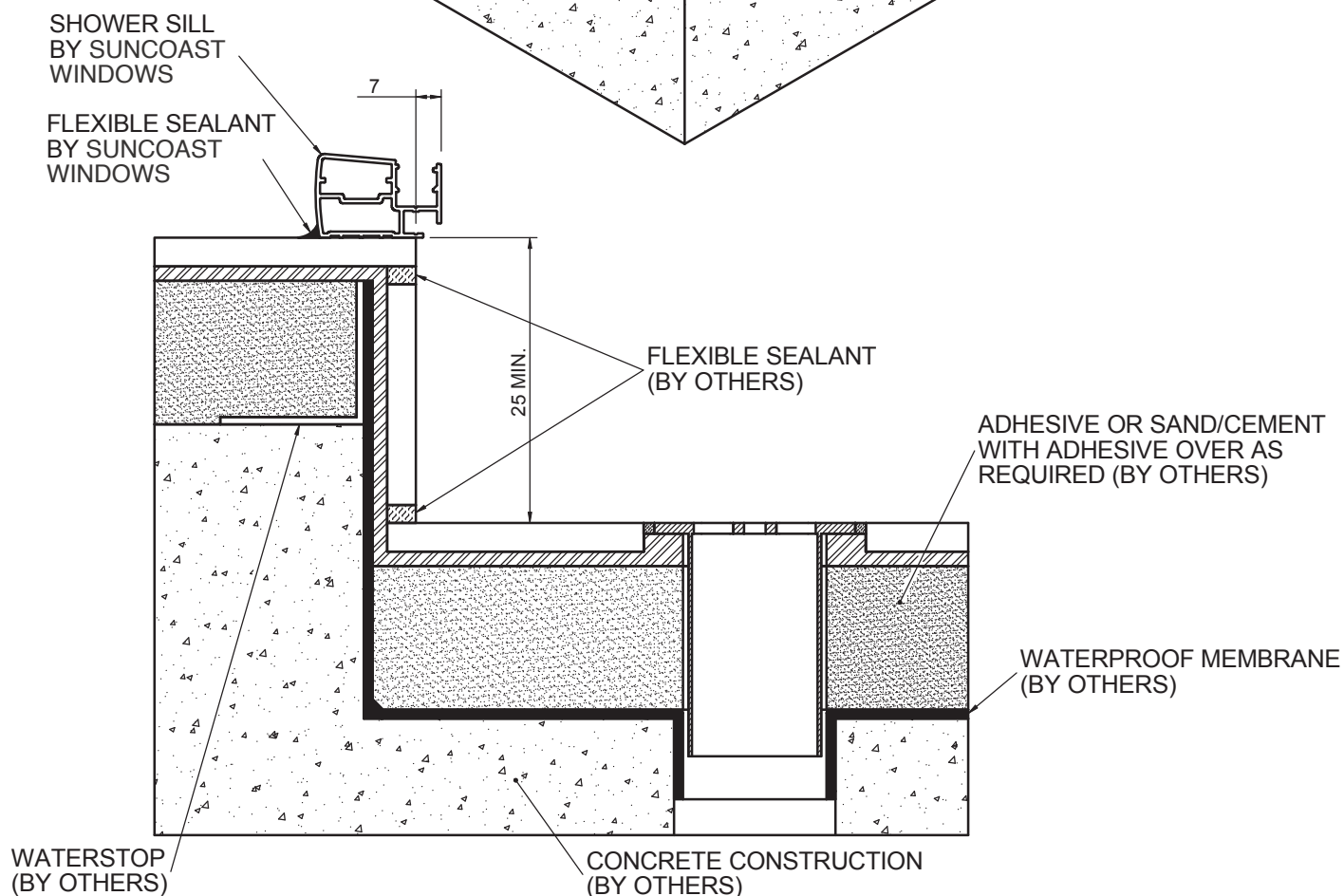
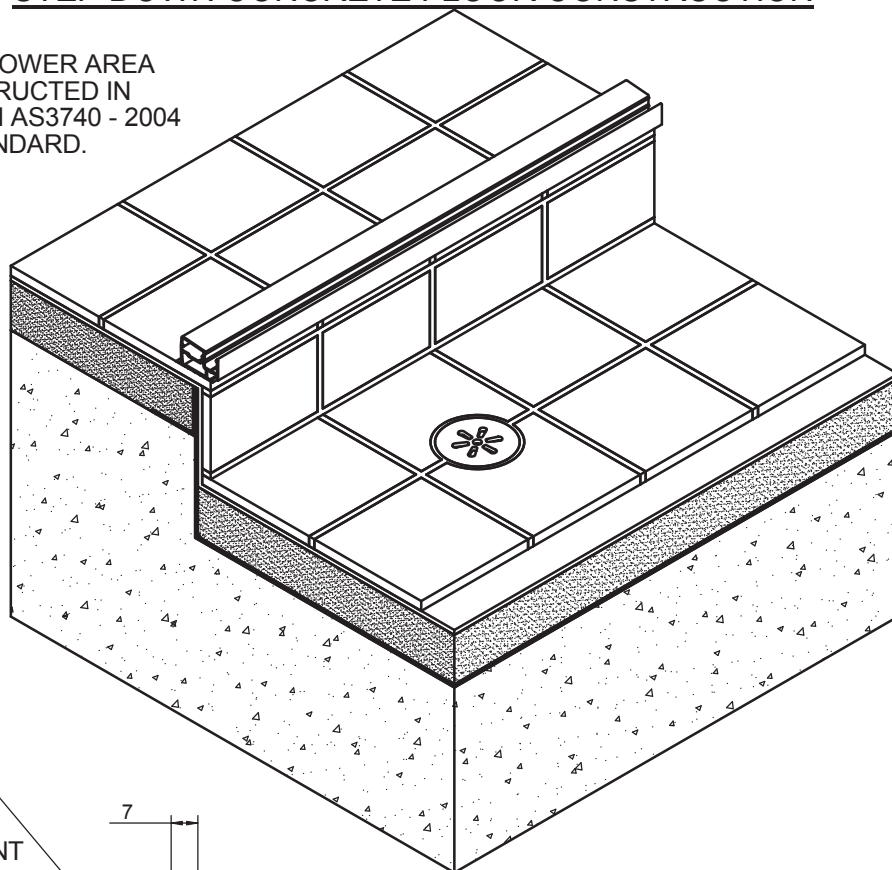


PRODUCT NO: NOOD 400
DRAWING NO: NUDE-SS-02-02
DRAWN: JCF

DATE: 22/07/08
ISSUE: A
SCALE: 1 : 2

STEP DOWN CONCRETE FLOOR CONSTRUCTION

NOTE:
THE BATHROOM/SHOWER AREA
SHOULD BE CONSTRUCTED IN
ACCORDANCE WITH AS3740 - 2004
WATERPROOF STANDARD.

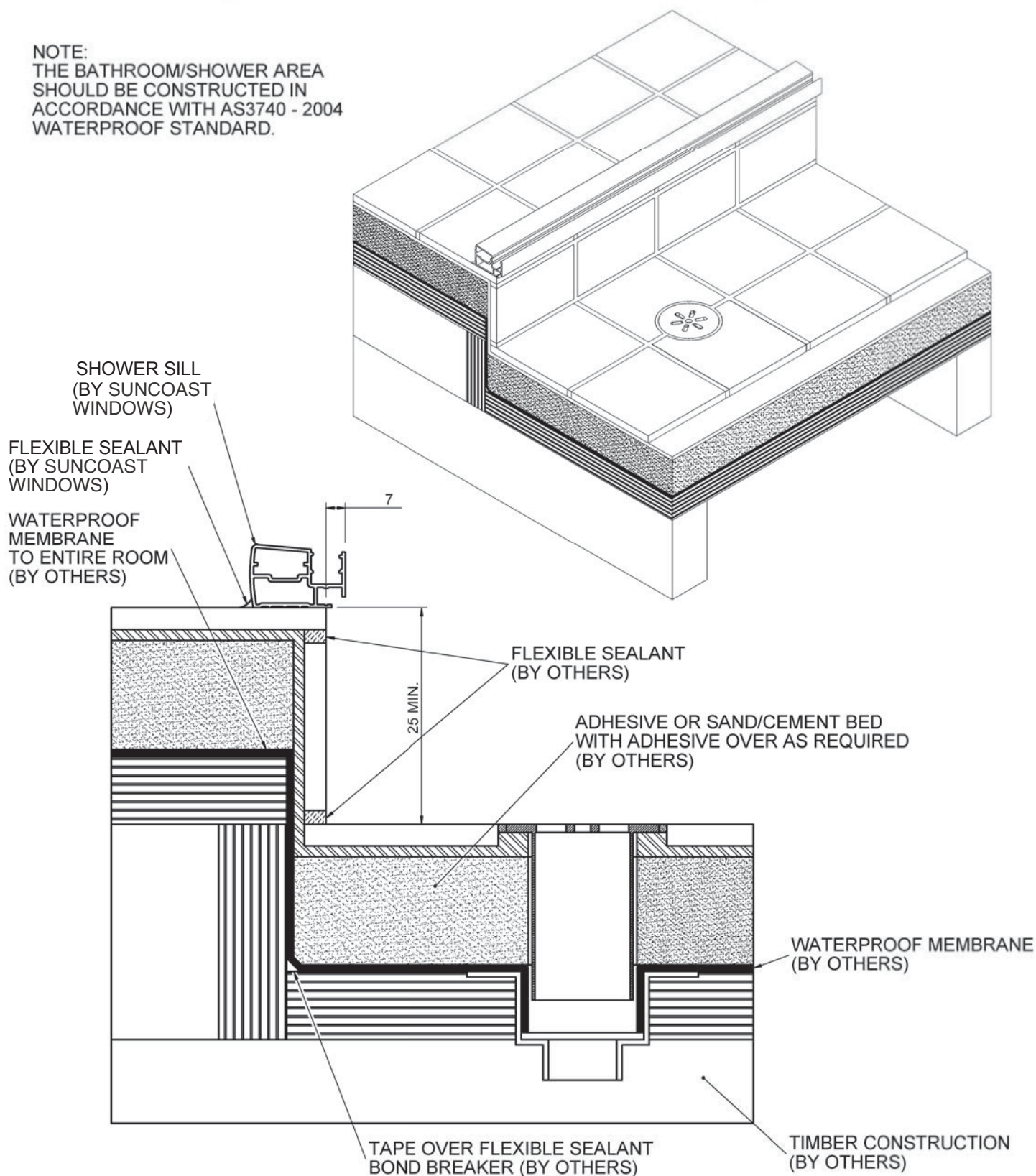


PRODUCT NO: NOOD 400
DRAWING NO: NUDE-SS-02-03
DRAWN: JCF

DATE: 22/07/08
ISSUE: A
SCALE: 1 : 2

STEP DOWN TIMBER FLOOR CONSTRUCTION

NOTE:
THE BATHROOM/SHOWER AREA
SHOULD BE CONSTRUCTED IN
ACCORDANCE WITH AS3740 - 2004
WATERPROOF STANDARD.



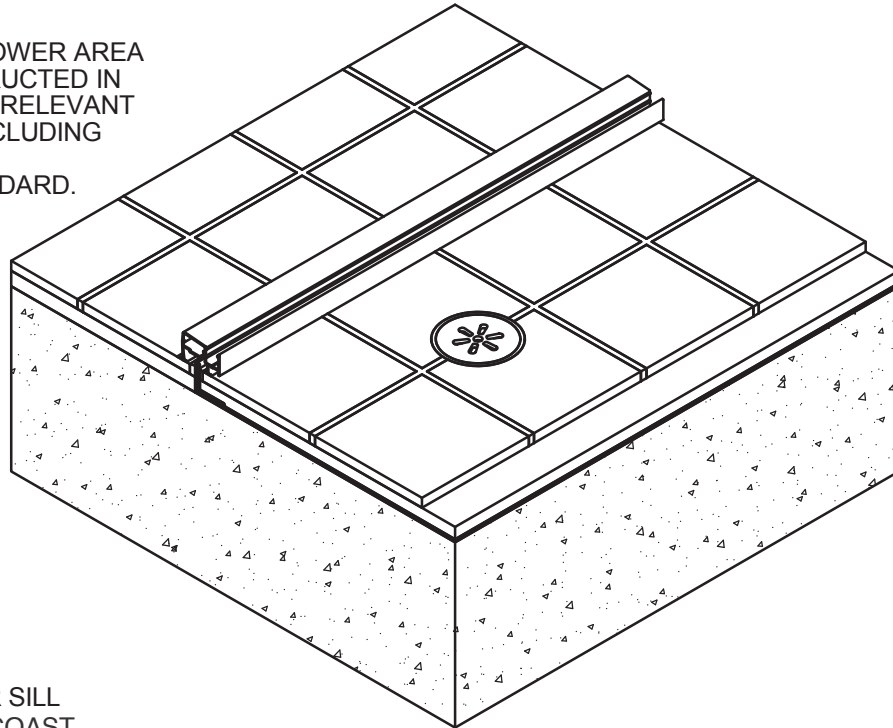
PRODUCT NO: NOOD 400
DRAWING NO: NUDE-SS-02-04
DRAWN: JCF

DATE: 22/07/08
ISSUE: A
SCALE: 1 : 2

 **SUNCOAST
WINDOWS**
Quality . Style . Innovation

ANGLE ON TIMBER CONCRETE CONSTRUCTION

NOTE:
THE BATHROOM/SHOWER AREA
SHOULD BE CONSTRUCTED IN
ACCORDANCE WITH RELEVANT
BUILDING CODES INCLUDING
AS3740 - 2004
WATERPROOF STANDARD.



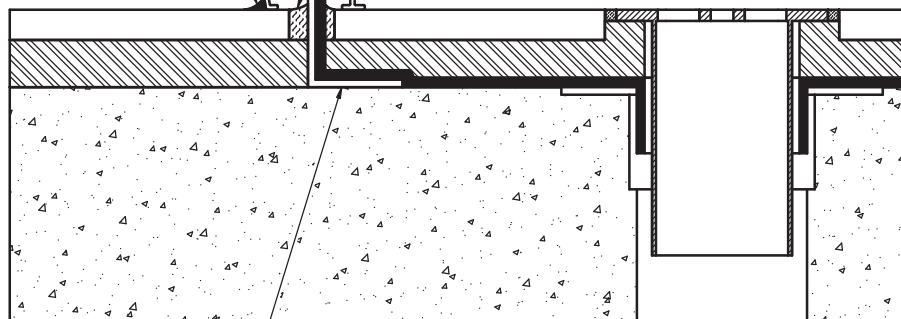
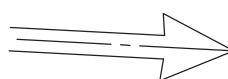
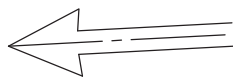
SHOWER SILL
(BY SUNCOAST
WINDOWS)

FLEXIBLE SEALANT
(BY SUNCOAST
WINDOWS)

SEAL WATERSTOP AT ENDS WHERE IT MEETS WALL.
SEAL EXTERNAL JOINT BETWEEN TILE AND WATERSTOP.

FALL AS PER AS3740

FALL AS PER AS3740



TILE ADHESIVE
(BY OTHERS)

WATERPROOF
MEMBRANE
(BY OTHERS)

WATERSTOP
(BY OTHERS)
NOT TO BE CUT OR DAMAGED IN
ANY CIRCUMSTANCE.

CONCRETE CONSTRUCTION
(BY OTHERS)

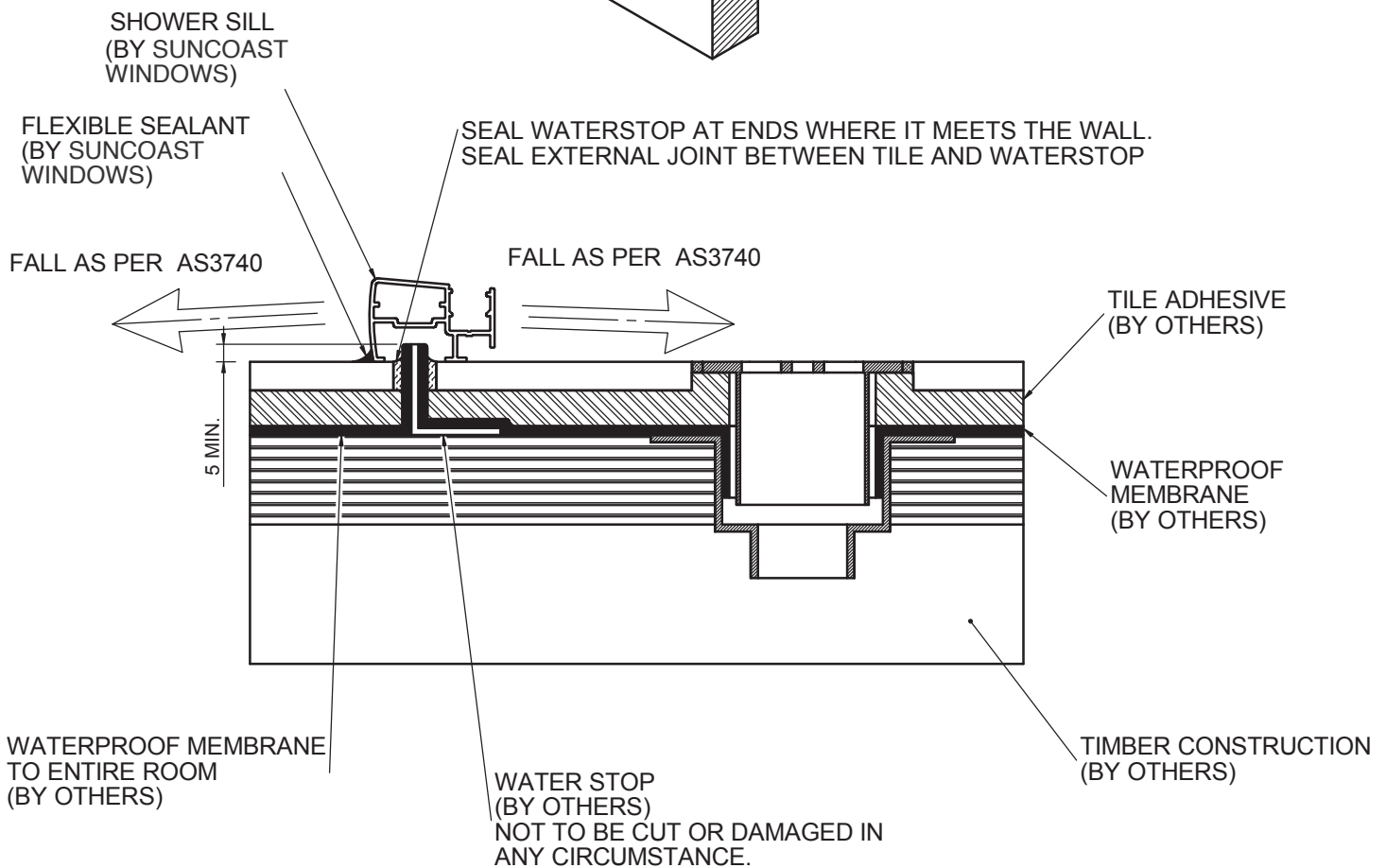
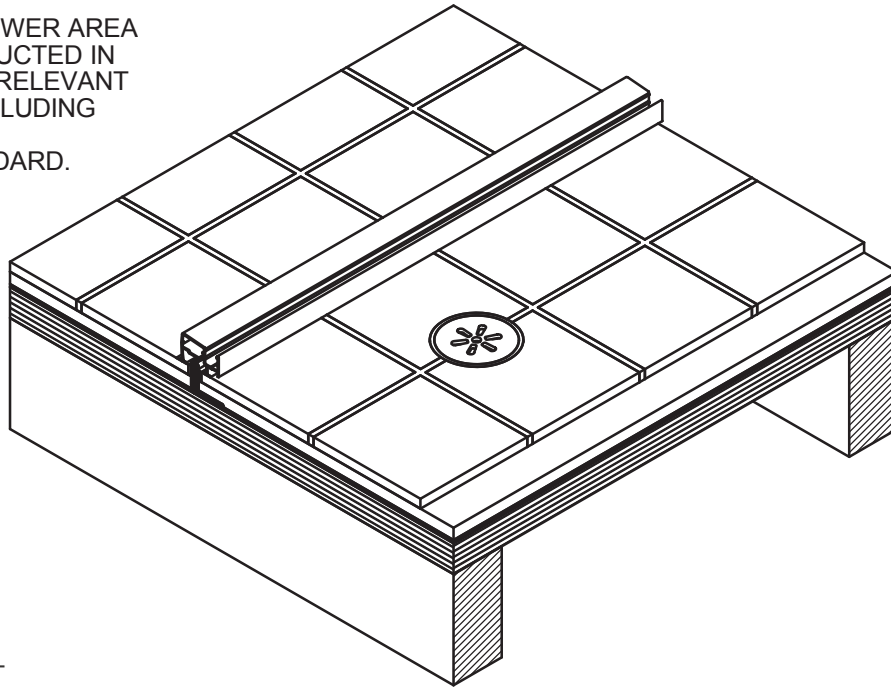
PRODUCT NO: NOOD 400
DRAWING NO: NUDE-SS-02-05
DRAWN: JCF

DATE: 10/04/17
ISSUE: B
SCALE: 1 : 2

 **SUNCOAST
WINDOWS**
Quality . Style . Innovation

ANGLE ON TIMBER FLOOR CONSTRUCTION

NOTE:
THE BATHROOM/SHOWER AREA
SHOULD BE CONSTRUCTED IN
ACCORDANCE WITH RELEVANT
BUILDING CODES INCLUDING
AS3740 - 2004
WATERPROOF STANDARD.



PRODUCT NO: NOOD 400
DRAWING NO: NUDE-SS-02-06
DRAWN: JCF

DATE: 10/04/17
ISSUE: B
SCALE: 1 : 2

 **SUNCOAST
WINDOWS**
Quality . Style . Innovation

INSTALLATION PROCEDURE

SILL

NOTE: SILL MUST BE LEVEL PACK IF NECESSARY

MAY REQUIRE AN ALUMINIUM ANGLE ON HOB EDGE
SEE COMPONENTS PAGE 05-07 FOR STD ANGLES.

STEP 1

ENSURE SILL CHANNEL
HAS DRAINAGE HOLES
SEE PAGE 06-02

STEP 2

LEVEL AND PACK SILL
ENSURE ANY GAP UNDER
PIVOT LOCATION IS PACKED

STEP 3

COMPLETELY FILL
ENDS OF SILL AND ALL MITRE
JOINTS WITH 680 SILICONE
TO MAKE CAVITIES
WATERPROOF

STEP 4

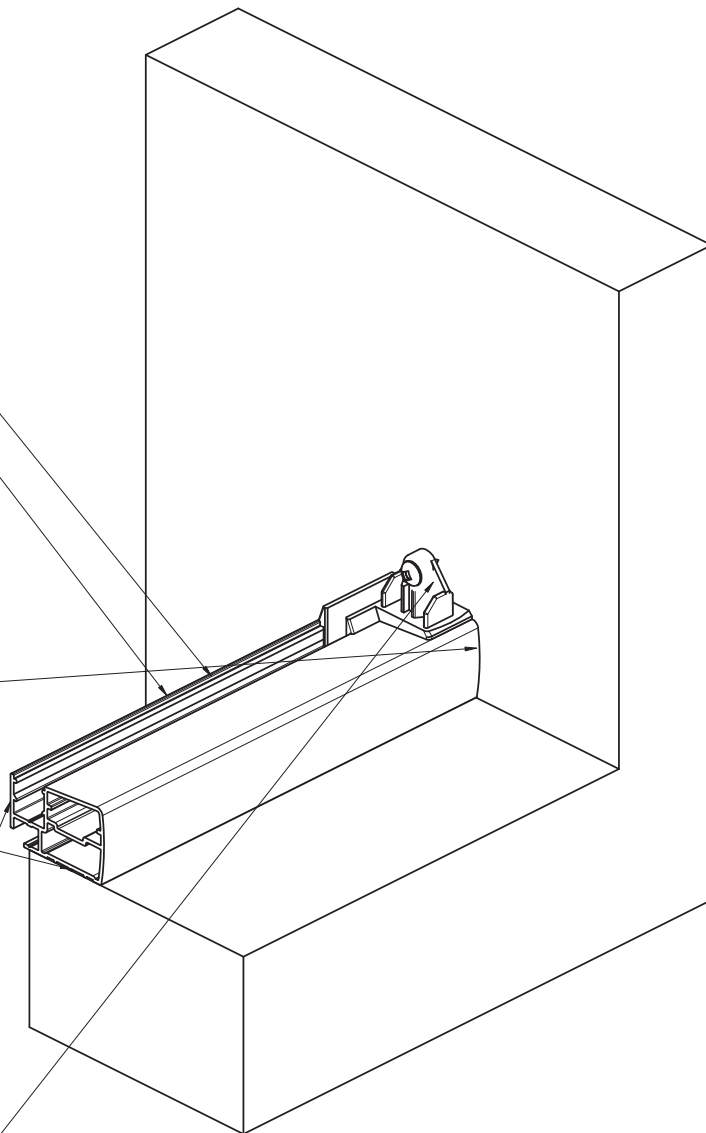
BED SILL IN SILICONE

STEP 5

SILL OVERHANGS HOB BY 7mm

STEP 6

SEAL OVER WALL CHANNEL TRIM
BEFORE FITTING WALL CHANNEL



PRODUCT NO: NOOD 400
DRAWING NO: NUDE-SS-02-07
DRAWN: JCF

DATE: 10/04/17

ISSUE: B

SCALE: 1 : 2



**SUNCOAST
WINDOWS**
Quality . Style . Innovation

INSTALLATION PROCEDURE SNAP WALL CHANNEL

STEP 1

WALL CHANNEL FIT
ONTO WALL
CHANNEL TRIM.
CHECK FOR
PLUMB.

STEP 2

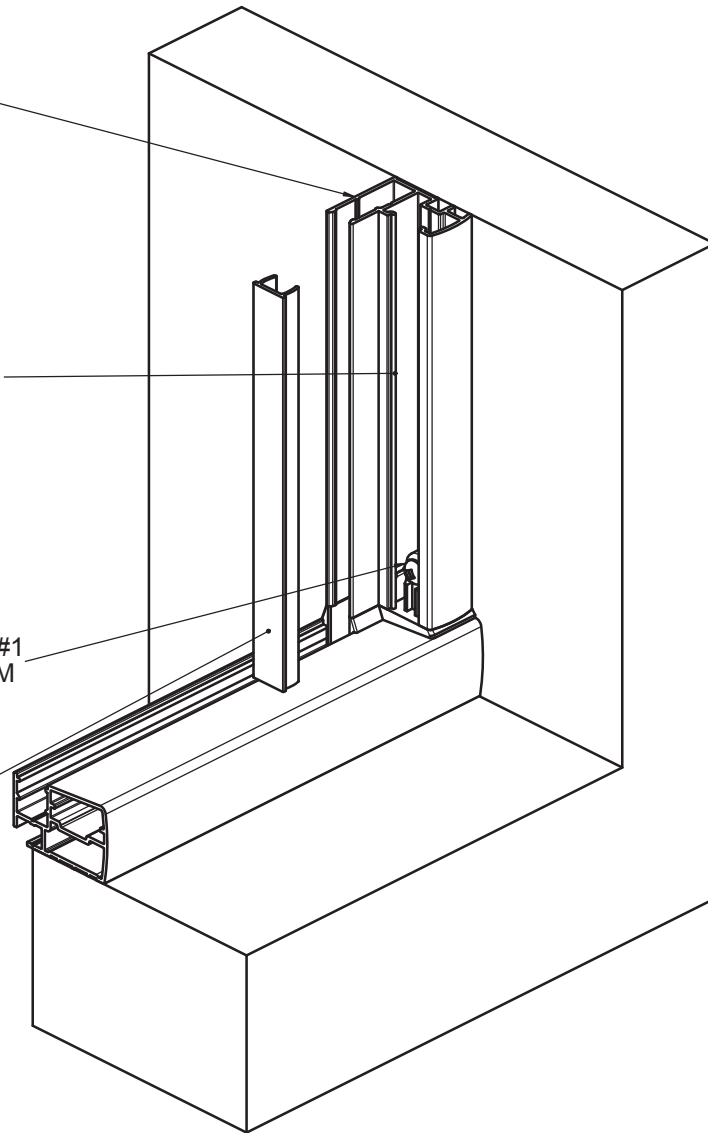
FASTEN WITH 83759
SCREW SQ 8G X 1.18 CSK SS
#2
THROUGH GROUT-LINE.
OR APROPRIATE WALL PLUG
AND SCREW IF THROUGH TILE.
TOP FIXING MUST BE A
MAXIMUM OF 150 FROM TOP
OF SHOWER.

STEP 3

FASTEN WITH 83753
SCREW SQ 6G X 0.375 PAN SS #1
THROUGH WALL CHANNEL TRIM
SILL AND HEAD

STEP 4

SNAP IN INFILL
AFTER HEAD FITTED
AND FASTENED



PRODUCT NO: NOOD 400
DRAWING NO: NUDE-SS-02-08
DRAWN: JCF

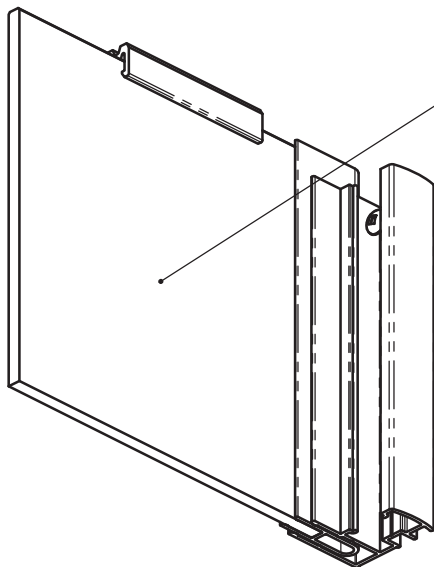
DATE: 10/04/17
ISSUE: B
SCALE: 1 : 2

 **SUNCOAST
WINDOWS**
Quality . Style . Innovation

INSTALLATION PROCEDURE RETURNS , INFILLS & HEAD

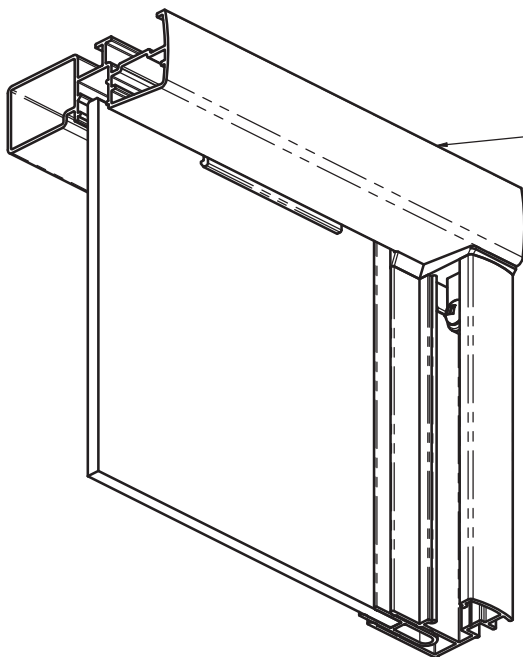
STEP 1

INSTALL RETURN AND INFILL
PANELS INTO SILL AND
SNAP WALL CHANNELS



STEP 2

INSTALL HEAD (HD HEAD SHOWN) ONTO
RETURNS AND INFILLS
HEAD IS RETAINED BY SCREWS INTO WALL
CHANNEL TRIMS. MAKE SURE THAT HEAD
IS FULLY ENGAGED ONTO GLASS SPACER



PRODUCT NO: NOOD 400
DRAWING NO: NUDE-SS-02-09
DRAWN: JCF

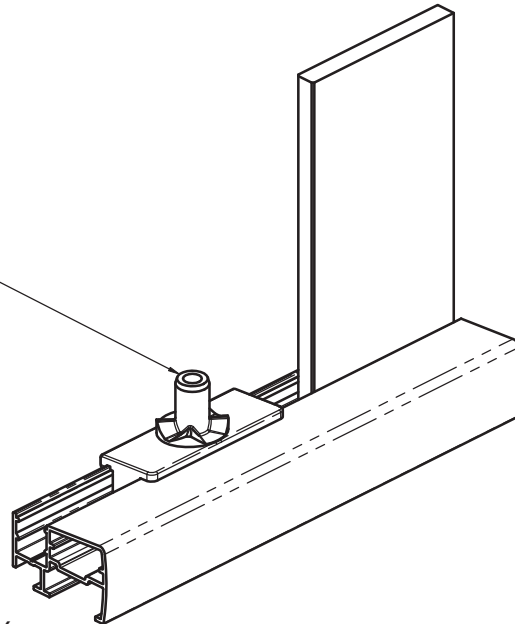
DATE: 22/01/09
ISSUE: A
SCALE: 1 : 2

 **SUNCOAST
WINDOWS**
Quality . Style . Innovation

INSTALLATION PROCEDURE DOOR PIVOT BASE SILL AND DOOR

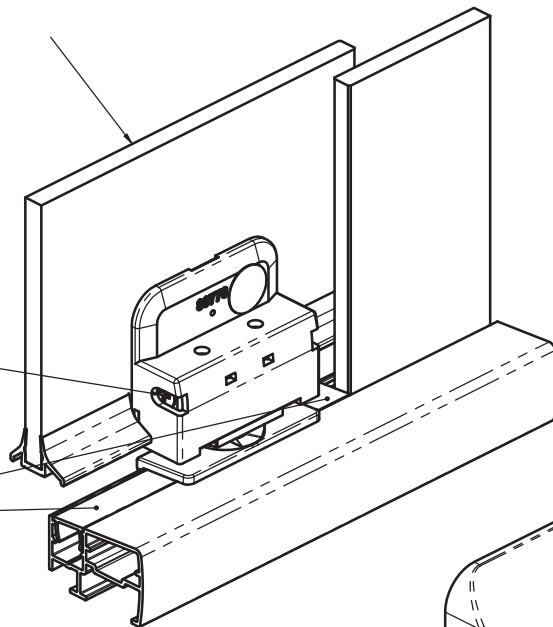
STEP 1

FIT 80781
PIVOT BASE SILL
LOCATE PIN IN MIDDLE HOLE
AND SCREW OFF (FACTORY FITTED)



STEP 2

FIT THE DOOR PANEL ASSEMBLY
ONTO THE PIVOT BASE SILL POSITION THE DOOR
IN MOST CASES THE HEAD CAN BE LIFTED SLIGHTLY
TO ALLOW TOP PIVOT BASE TO LOCATE ON PIVOT PIN.
OTHERWISE THE PIVOT BASE HEAD
CAN BE FITTED WITH THE DOOR PANEL
AND FASTENED ONCE THE DOOR HAS BEEN
POSITIONED.
THE PIN ON THE PIVOT BASE AIDS
LOCATION INTO THE MIDDLE HOLE
OF THE 3 PREDRILLED HOLES IN THE HEAD
AND LOCATE THE PIVOT BASE HEAD THEN
FASTEN THE PIVOT BASE HEAD USING 2 SCREWS

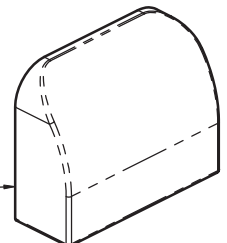


STEP 3

ADJUST THE DOOR USING THE
ADJUSTMENT SCREWS AT SILL AND
HEAD.

STEP 4

FIT BN460 (2953) POCKET INFILL AND
80800 INFILL POCKET PLASTIC



STEP 5

FIT PIVOT COVERS

PRODUCT NO: NOOD 400
DRAWING NO: NUDE-SS-02-10
DRAWN: JCF

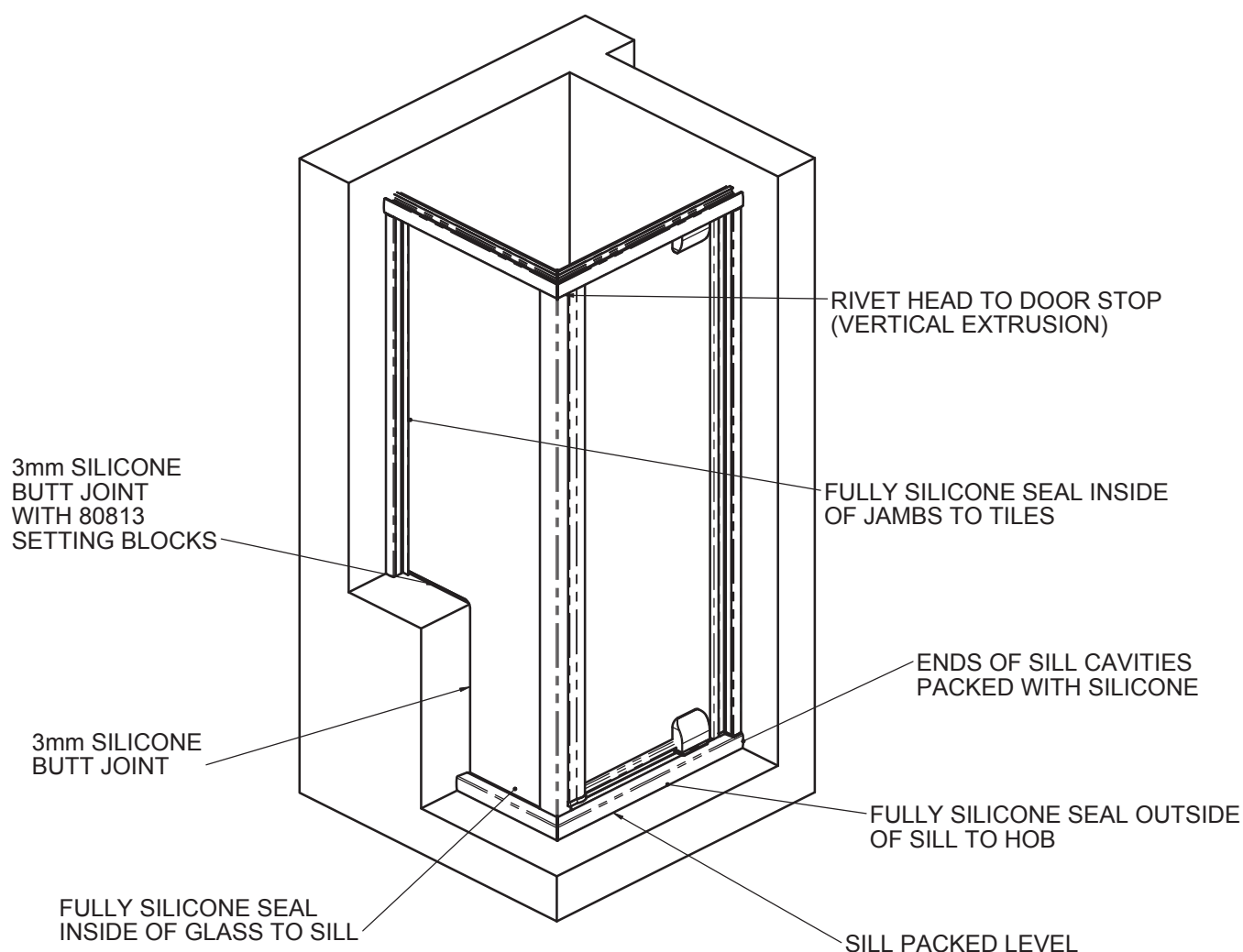
DATE: 22/01/09
ISSUE: A
SCALE: 1 : 2

 **SUNCOAST
WINDOWS**
Quality . Style . Innovation

INSTALLATION PROCEDURE

TYPICAL SILICONE SEALING OF NOOD ESSENTIAL SHOWER SCREEN

RECOMMENDED SILICONE SEALANT
DOW CORNING 680 SILICONE - SANITARY SEALANT
WHICH IS A NEUTRAL CURE SILICONE SEALANT FORMULATED
TO PREVENT MOULD AND MILDEW



PRODUCT NO: NOOD 400
DRAWING NO: NUDE-SS-02-11
DRAWN: JCF

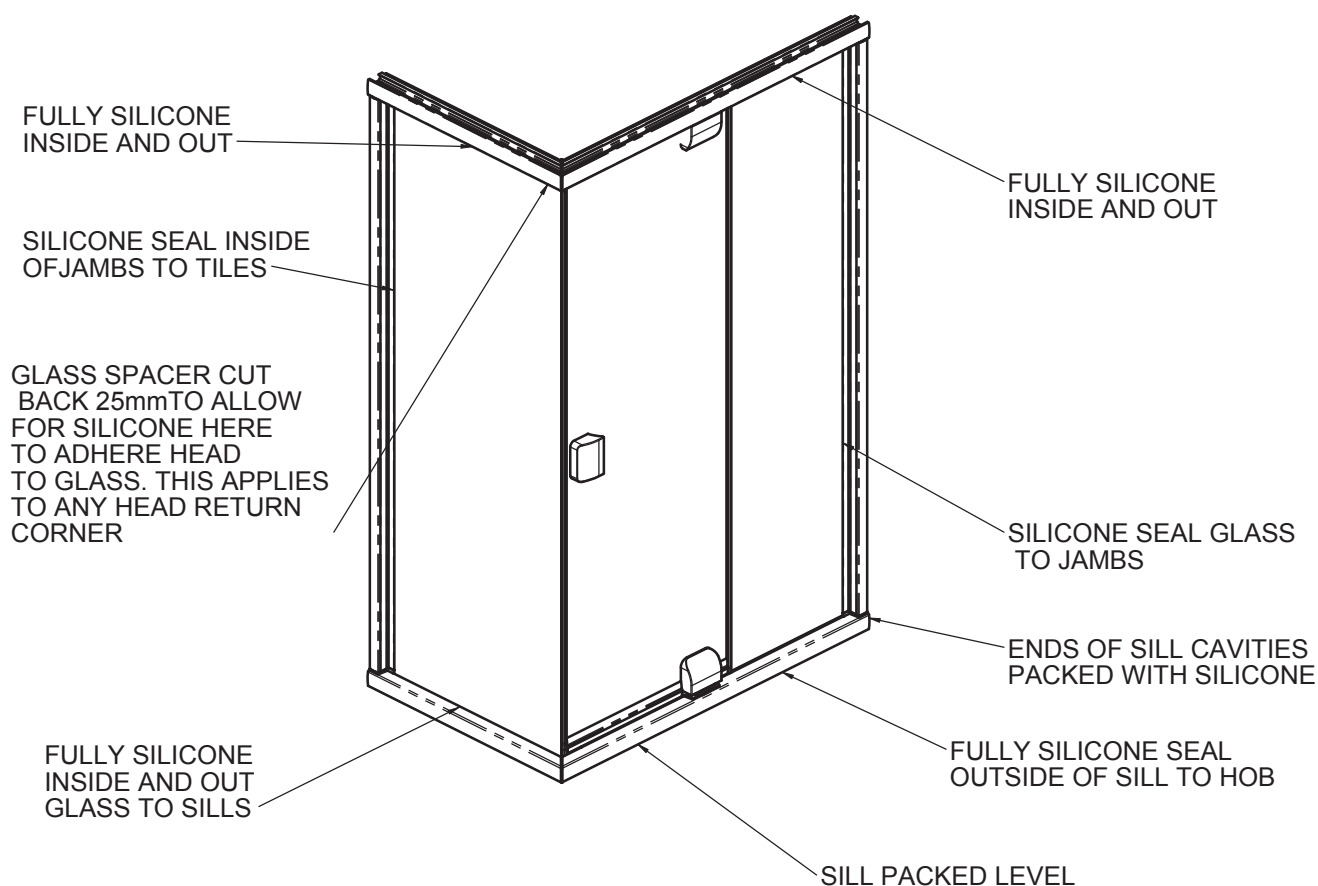
DATE: 30/03/11
ISSUE: A
SCALE: 1 : 2

 **SUNCOAST
WINDOWS**
Quality . Style . Innovation

INSTALLATION PROCEDURE

TYPICAL SILICONE SEALING OF NOOD SIGNATURE SHOWER SCREEN

RECOMMENDED SILICONE SEALANT
DOW CORNING 680 SILICONE - SANITARY SEALANT
WHICH IS A NEUTRAL CURE SILICONE SEALANT FORMULATED
TO PREVENT MOULD AND MILDEW



FOR NOOD SIGNATURE SHOWER SCREENS WITH RETURNS USE SILICONE TO GLUE HEAD TO GLASS APPROXIMATELY 25mm BLOB.

PRODUCT NO: NOOD 400
DRAWING NO: NUDE-SS-02-12
DRAWN: JCF

DATE: 02/06/11
ISSUE: A
SCALE: -

 **SUNCOAST
WINDOWS**
Quality . Style . Innovation