

# Essential Showerscreen Signature Showerscreen

## Installation Details

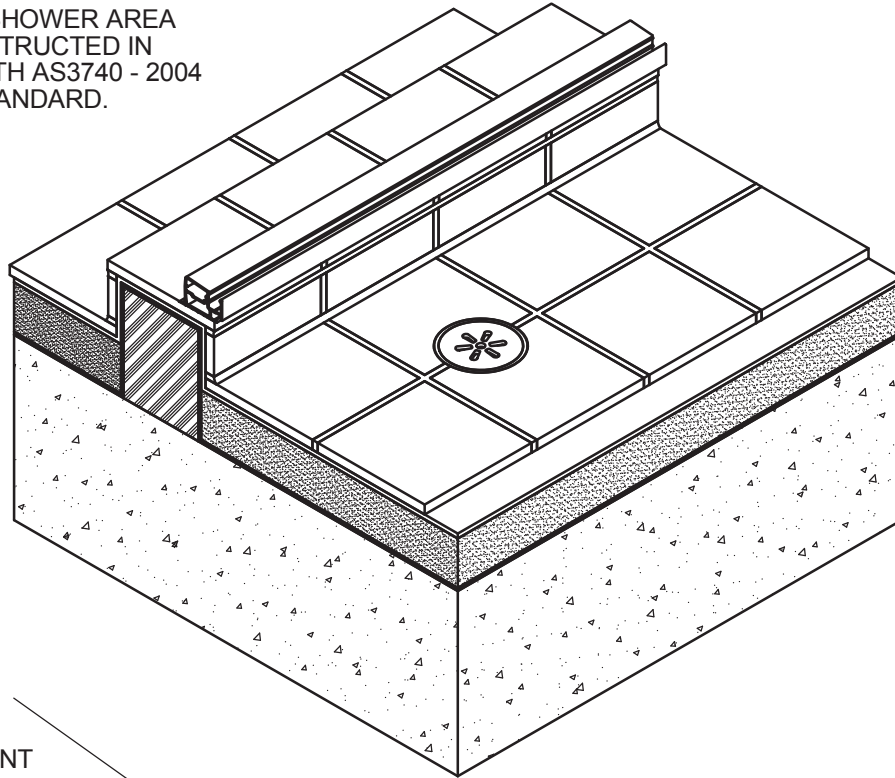


SUNCOAST  
WINDOWS

Quality . Style . Innovation

## HOB ON CONCRETE FLOOR CONSTRUCTION

NOTE:  
THE BATHROOM/SHOWER AREA  
SHOULD BE CONSTRUCTED IN  
ACCORDANCE WITH AS3740 - 2004  
WATERPROOF STANDARD.



SHOWER SILL  
BY SUNCOAST  
WINDOWS

FLEXIBLE SEALANT  
BY SUNCOAST  
WINDOWS

TIMBER MUST NOT  
BE USED FOR HOB

FLEXIBLE SEALANT  
(BY OTHERS)

ADHESIVE OR SAND/CEMENT BED  
WITH ADHESIVE OVER AS REQUIRED  
(BY OTHERS)

TILE ADHESIVE  
(BY OTHERS)

WATERPROOF  
MEMBRANE  
(BY OTHERS)

CONCRETE  
(BY OTHERS)

WATERPROOF MEMBRANE  
MIN. 50mm PAST HOB

PRODUCT NO: NOOD 400

DRAWING NO: NUDE-SS-02-01

DRAWN: JCF

DATE: 07/07/08

ISSUE: A

SCALE: 1 : 2

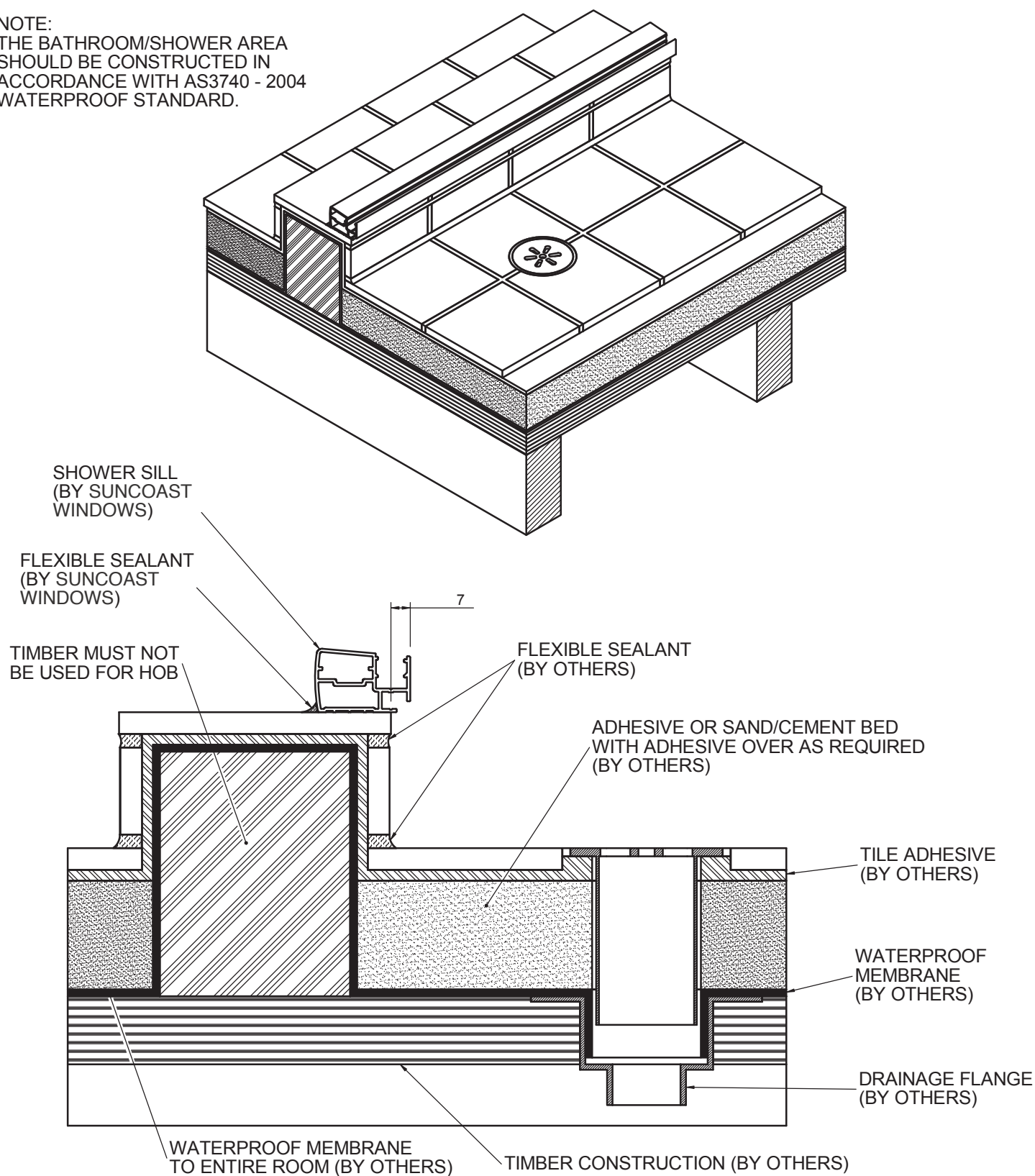


SUNCOAST  
WINDOWS

Quality . Style . Innovation

## HOB ON TIMBER FLOOR CONSTRUCTION

NOTE:  
THE BATHROOM/SHOWER AREA  
SHOULD BE CONSTRUCTED IN  
ACCORDANCE WITH AS3740 - 2004  
WATERPROOF STANDARD.



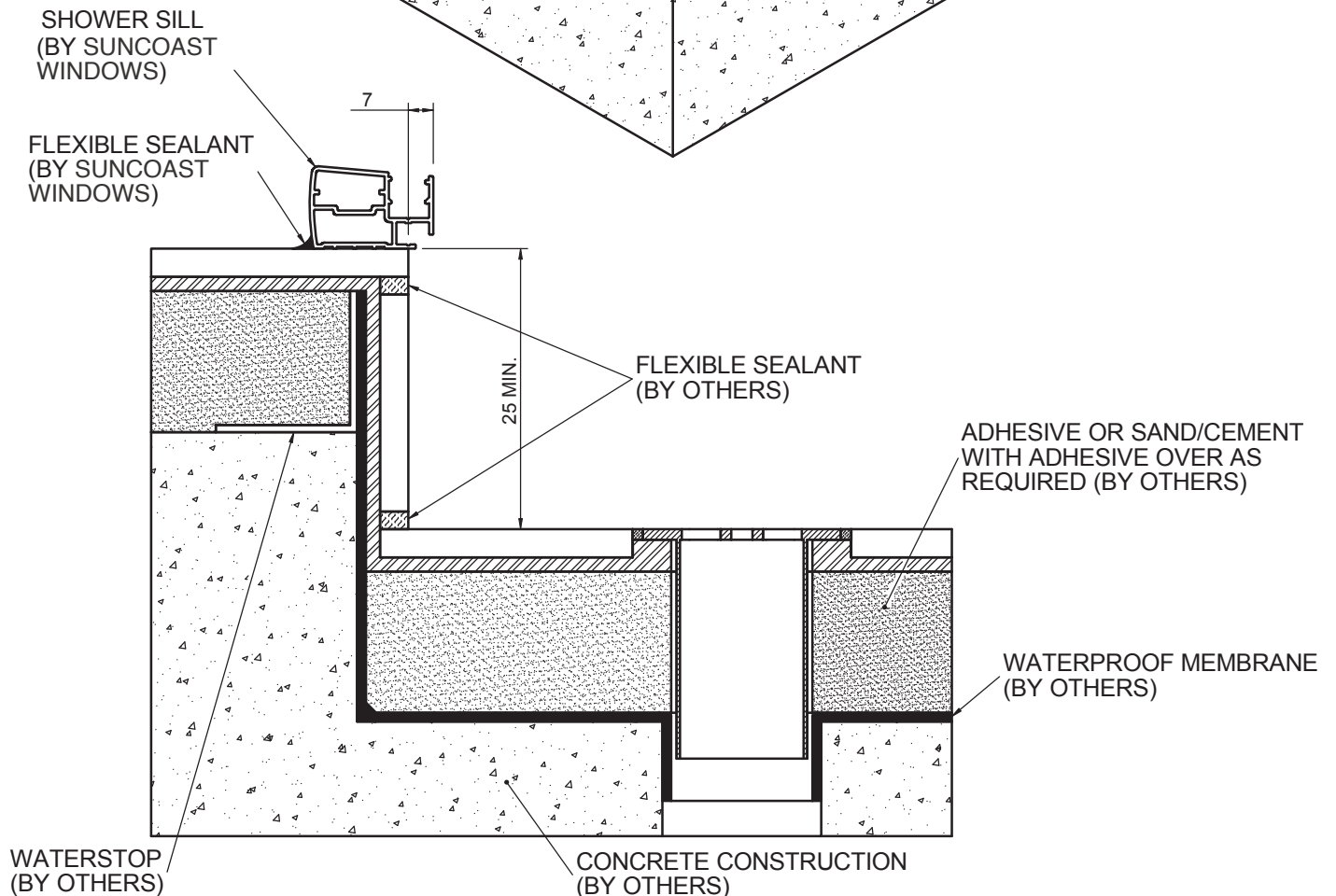
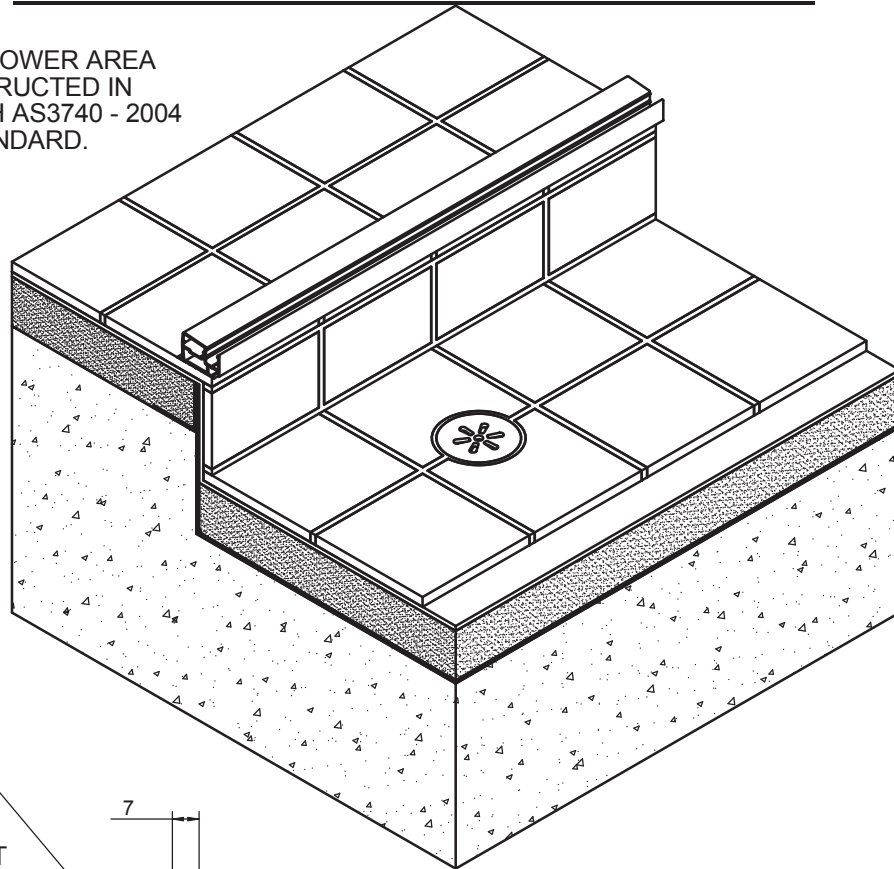
PRODUCT NO: NOOD 400  
DRAWING NO: NUDE-SS-02-02  
DRAWN: JCF

DATE: 22/07/08  
ISSUE: A  
SCALE: 1 : 2

 **SUNCOAST  
WINDOWS**  
Quality . Style . Innovation

## STEP DOWN CONCRETE FLOOR CONSTRUCTION

NOTE:  
THE BATHROOM/SHOWER AREA  
SHOULD BE CONSTRUCTED IN  
ACCORDANCE WITH AS3740 - 2004  
WATERPROOF STANDARD.



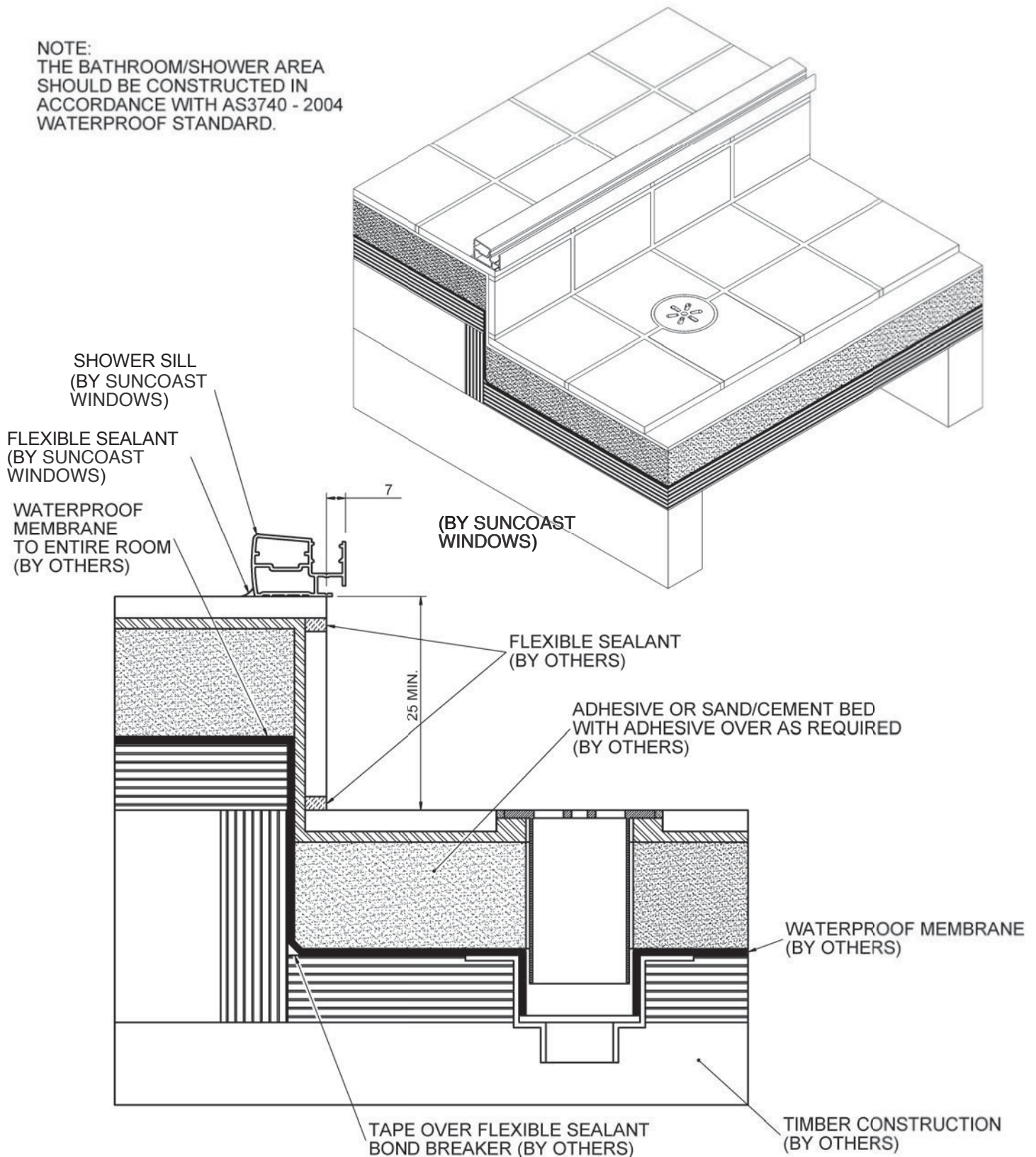
PRODUCT NO: NOOD 400  
DRAWING NO: NUDE-SS-02-03  
DRAWN: JCF

DATE: 22/07/08  
ISSUE: A  
SCALE: 1 : 2



## STEP DOWN TIMBER FLOOR CONSTRUCTION

NOTE:  
THE BATHROOM/SHOWER AREA  
SHOULD BE CONSTRUCTED IN  
ACCORDANCE WITH AS3740 - 2004  
WATERPROOF STANDARD.



PRODUCT NO: NOOD 400  
DRAWING NO: NUDE-SS-02-04  
DRAWN: JCF

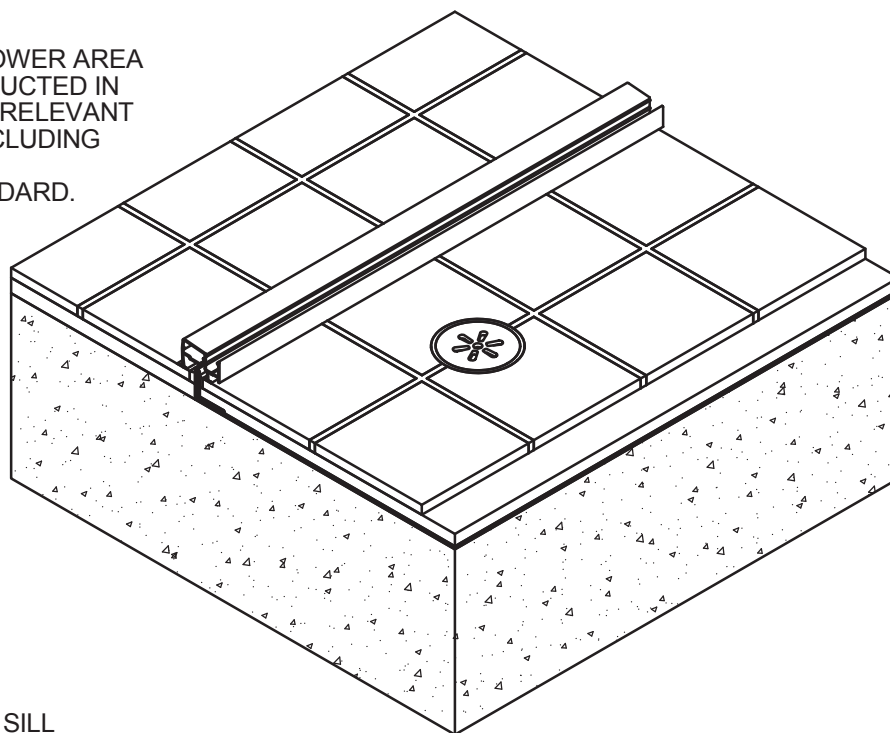
DATE: 22/07/08  
ISSUE: A  
SCALE: 1 : 2



SUNCOAST  
WINDOWS  
Quality . Style . Innovation

## ANGLE ON TIMBER CONCRETE CONSTRUCTION

NOTE:  
THE BATHROOM/SHOWER AREA  
SHOULD BE CONSTRUCTED IN  
ACCORDANCE WITH RELEVANT  
BUILDING CODES INCLUDING  
AS3740 - 2004  
WATERPROOF STANDARD.



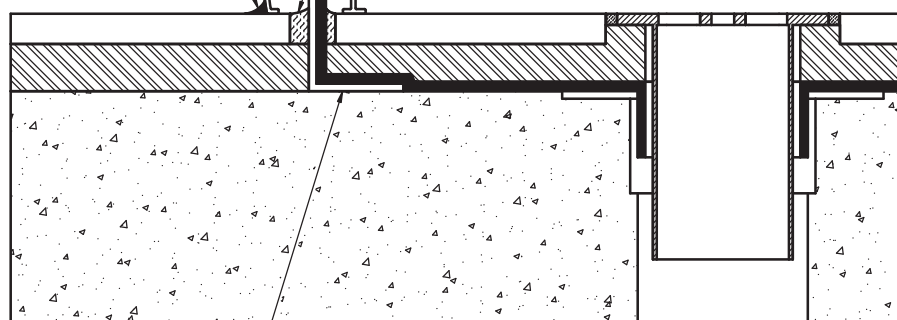
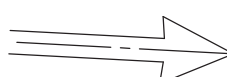
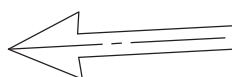
SHOWER SILL  
(BY SUNCOAST  
WINDOWS)

FLEXIBLE SEALANT  
(BY SUNCOAST  
WINDOWS)

SEAL WATERSTOP AT ENDS WHERE IT MEETS WALL.  
SEAL EXTERNAL JOINT BETWEEN TILE AND WATERSTOP.

FALL AS PER AS3740

FALL AS PER AS3740



TILE ADHESIVE  
(BY OTHERS)

WATERPROOF  
MEMBRANE  
(BY OTHERS)

WATERSTOP  
(BY OTHERS)  
NOT TO BE CUT OR DAMAGED IN  
ANY CIRCUMSTANCE.

CONCRETE CONSTRUCTION  
(BY OTHERS)

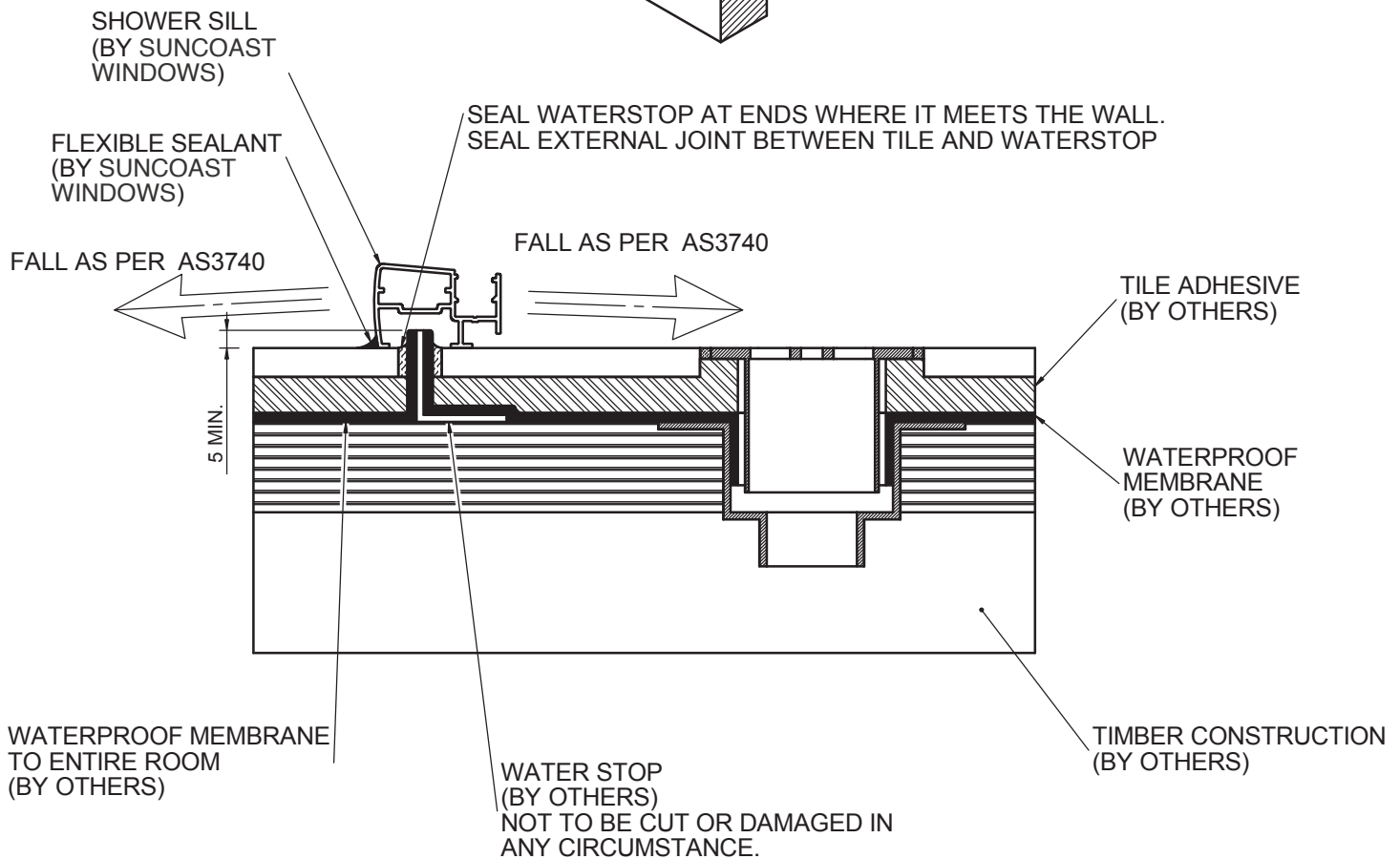
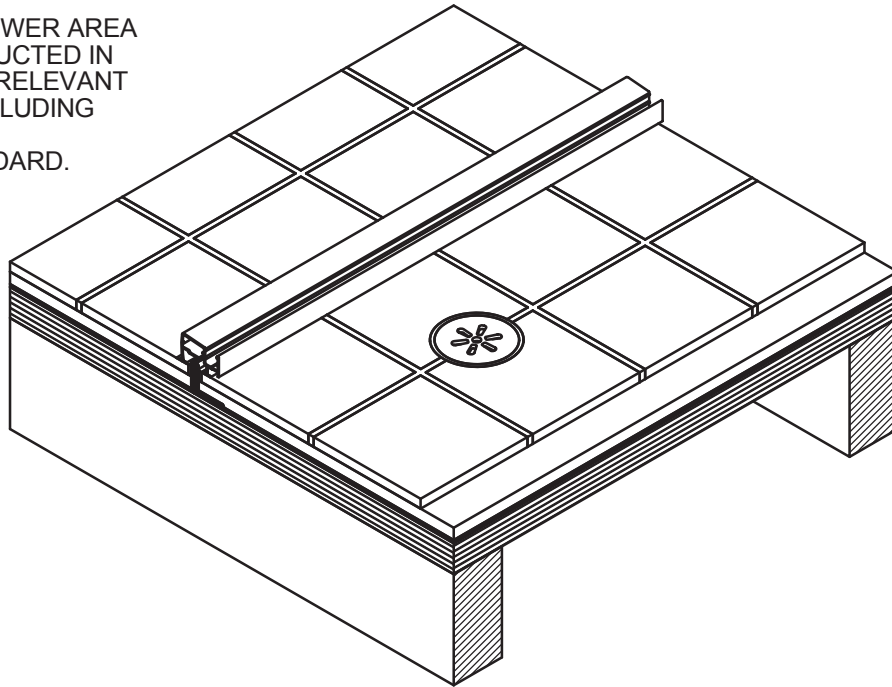
PRODUCT NO: NOOD 400  
DRAWING NO: NUDE-SS-02-05  
DRAWN: JCF

DATE: 10/04/17  
ISSUE: B  
SCALE: 1 : 2

 **SUNCOAST  
WINDOWS**  
Quality . Style . Innovation

## ANGLE ON TIMBER FLOOR CONSTRUCTION

NOTE:  
THE BATHROOM/SHOWER AREA  
SHOULD BE CONSTRUCTED IN  
ACCORDANCE WITH RELEVANT  
BUILDING CODES INCLUDING  
AS3740 - 2004  
WATERPROOF STANDARD.



PRODUCT NO: NOOD 400  
DRAWING NO: NUDE-SS-02-06  
DRAWN: JCF

DATE: 10/04/17  
ISSUE: B  
SCALE: 1 : 2

 **SUNCOAST  
WINDOWS**  
Quality . Style . Innovation

## INSTALLATION PROCEDURE

### SILL

**NOTE: SILL MUST BE LEVEL PACK IF NECESSARY**

MAY REQUIRE AN ALUMINIUM ANGLE ON HOB EDGE  
SEE COMPONENTS PAGE 05-07 FOR STD ANGLES.

#### **STEP 1**

ENSURE SILL CHANNEL  
HAS DRAINAGE HOLES  
SEE PAGE 06-02

#### **STEP 2**

LEVEL AND PACK SILL  
ENSURE ANY GAP UNDER  
PIVOT LOCATION IS PACKED

#### **STEP 3**

COMPLETELY FILL  
ENDS OF SILL AND ALL MITRE  
JOINTS WITH 680 SILICONE  
TO MAKE CAVITIES  
WATERPROOF

#### **STEP 4**

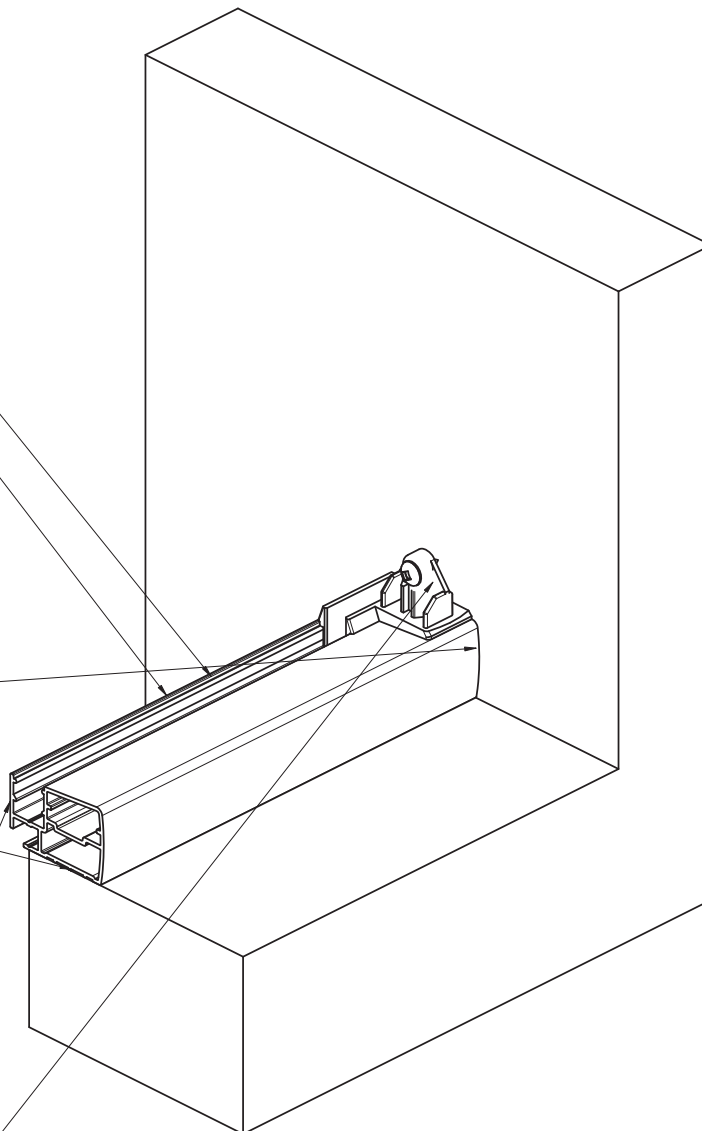
BED SILL IN SILICONE

#### **STEP 5**

SILL OVERHANGS HOB BY 7mm

#### **STEP 6**

SEAL OVER WALL CHANNEL TRIM  
BEFORE FITTING WALL CHANNEL



PRODUCT NO: NOOD 400  
DRAWING NO: NUDE-SS-02-07  
DRAWN: JCF

DATE: 10/04/17  
ISSUE: B  
SCALE: 1 : 2

 **SUNCOAST  
WINDOWS**  
Quality . Style . Innovation



## INSTALLATION PROCEDURE SNAP WALL CHANNEL

### STEP 1

WALL CHANNEL FIT  
ONTO WALL  
CHANNEL TRIM.  
CHECK FOR  
PLUMB.

### STEP 2

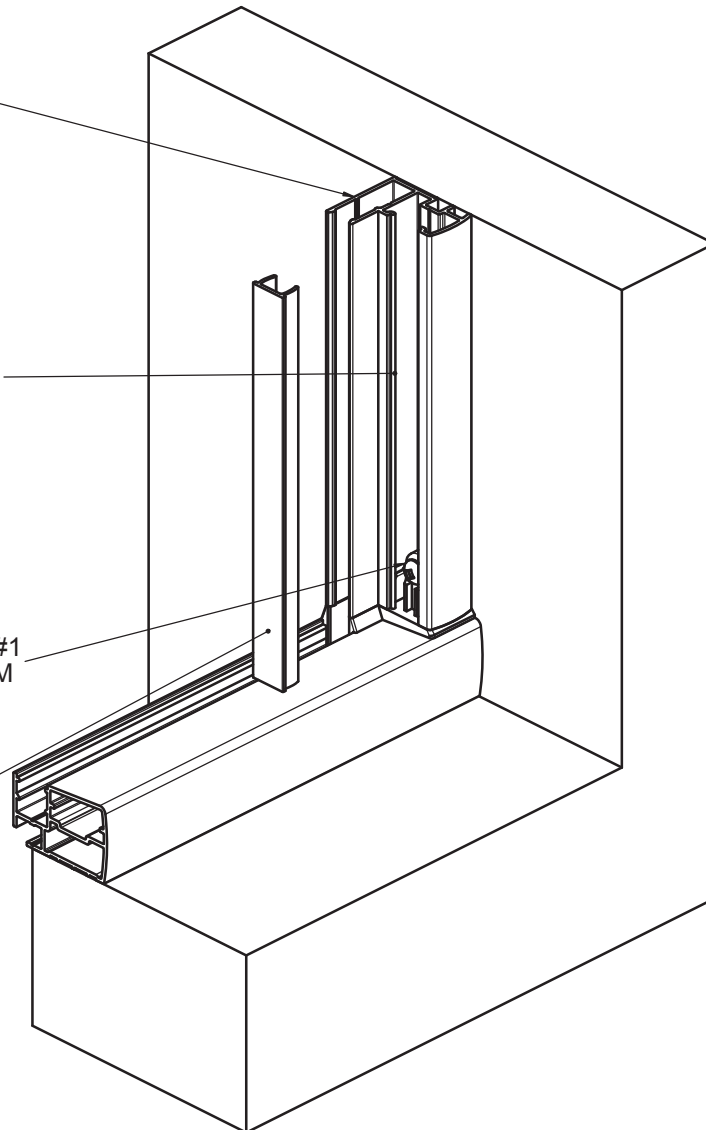
FASTEN WITH 83759  
SCREW SQ 8G X 1.18 CSK SS  
#2  
THROUGH GROUT-LINE.  
OR APROPRIATE WALL PLUG  
AND SCREW IF THROUGH TILE.  
TOP FIXING MUST BE A  
MAXIMUM OF 150 FROM TOP  
OF SHOWER.

### STEP 3

FASTEN WITH 83753  
SCREW SQ 6G X 0.375 PAN SS #1  
THROUGH WALL CHANNEL TRIM  
SILL AND HEAD

### STEP 4

SNAP IN INFILL  
AFTER HEAD FITTED  
AND FASTENED



PRODUCT NO: NOOD 400  
DRAWING NO: NUDE-SS-02-08  
DRAWN: JCF

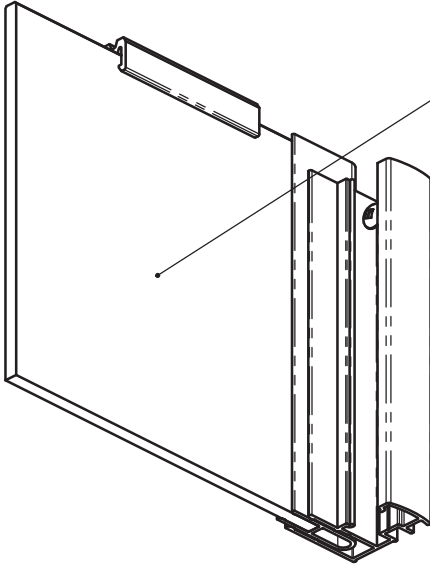
DATE: 10/04/17  
ISSUE: B  
SCALE: 1 : 2

 **SUNCOAST  
WINDOWS**  
Quality . Style . Innovation

## INSTALLATION PROCEDURE RETURNS , INFILLS & HEAD

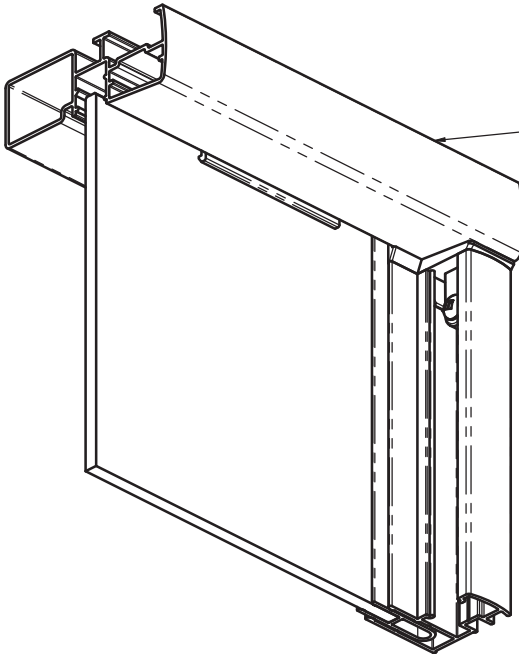
### STEP 1

INSTALL RETURN AND INFILL  
PANELS INTO SILL AND  
SNAP WALL CHANNELS



### STEP 2

INSTALL HEAD (HD HEAD SHOWN) ONTO  
RETURNS AND INFILLS  
HEAD IS RETAINED BY SCREWS INTO WALL  
CHANNEL TRIMS. MAKE SURE THAT HEAD  
IS FULLY ENGAGED ONTO GLASS SPACER



PRODUCT NO: NOOD 400  
DRAWING NO: NUDE-SS-02-09  
DRAWN: JCF

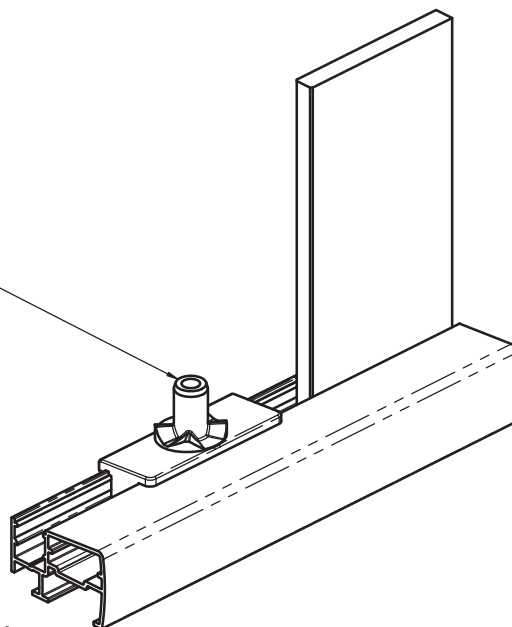
DATE: 22/01/09  
ISSUE: A  
SCALE: 1 : 2

 **SUNCOAST  
WINDOWS**  
Quality . Style . Innovation

## INSTALLATION PROCEDURE DOOR PIVOT BASE SILL AND DOOR

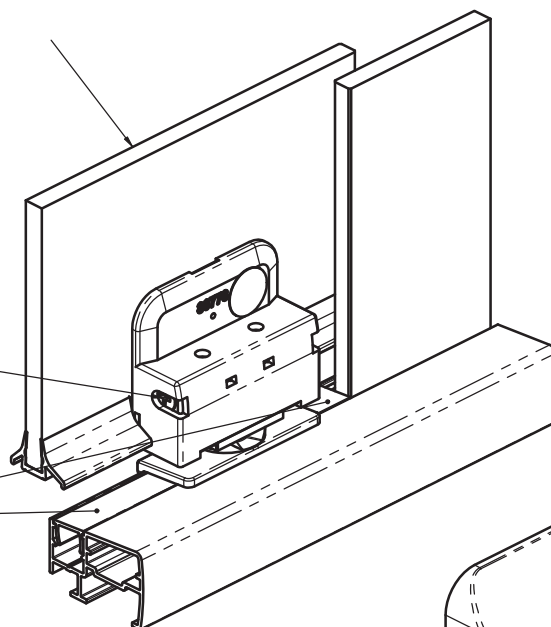
### STEP 1

FIT 80781  
PIVOT BASE SILL  
LOCATE PIN IN MIDDLE HOLE  
AND SCREW OFF (FACTORY FITTED)



### STEP 2

FIT THE DOOR PANEL ASSEMBLY  
ONTO THE PIVOT BASE SILL POSITION THE DOOR  
IN MOST CASES THE HEAD CAN BE LIFTED SLIGHTLY  
TO ALLOW TOP PIVOT BASE TO LOCATE ON PIVOT PIN.  
OTHERWISE THE PIVOT BASE HEAD  
CAN BE FITTED WITH THE DOOR PANEL  
AND FASTENED ONCE THE DOOR HAS BEEN  
POSITIONED.  
THE PIN ON THE PIVOT BASE AIDS  
LOCATION INTO THE MIDDLE HOLE  
OF THE 3 PREDRILLED HOLES IN THE HEAD  
AND LOCATE THE PIVOT BASE HEAD THEN  
FASTEN THE PIVOT BASE HEAD USING 2 SCREWS

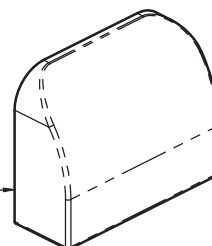


### STEP 3

ADJUST THE DOOR USING THE  
ADJUSTMENT SCREWS AT SILL AND  
HEAD.

### STEP 4

FIT BN460 (2953) POCKET INFILL AND  
80800 INFILL POCKET PLASTIC



### STEP 5

FIT PIVOT COVERS

PRODUCT NO: NOOD 400  
DRAWING NO: NUDE-SS-02-10  
DRAWN: JCF

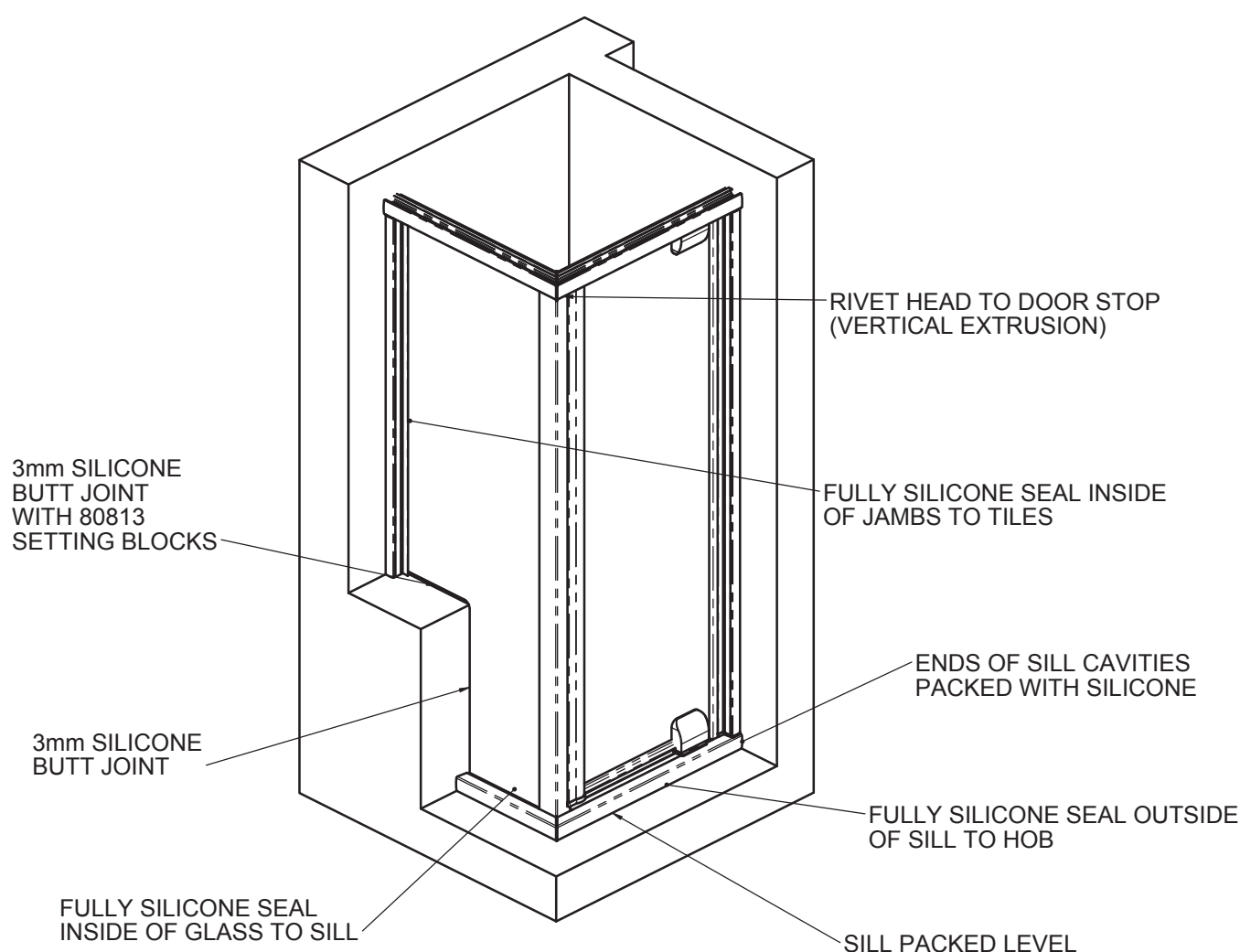
DATE: 22/01/09  
ISSUE: A  
SCALE: 1 : 2

 **SUNCOAST  
WINDOWS**  
Quality . Style . Innovation

## INSTALLATION PROCEDURE

### TYPICAL SILICONE SEALING OF NOOD ESSENTIAL SHOWER SCREEN

RECOMMENDED SILICONE SEALANT  
DOW CORNING 680 SILICONE - SANITARY SEALANT  
WHICH IS A NEUTRAL CURE SILICONE SEALANT FORMULATED  
TO PREVENT MOULD AND MILDEW



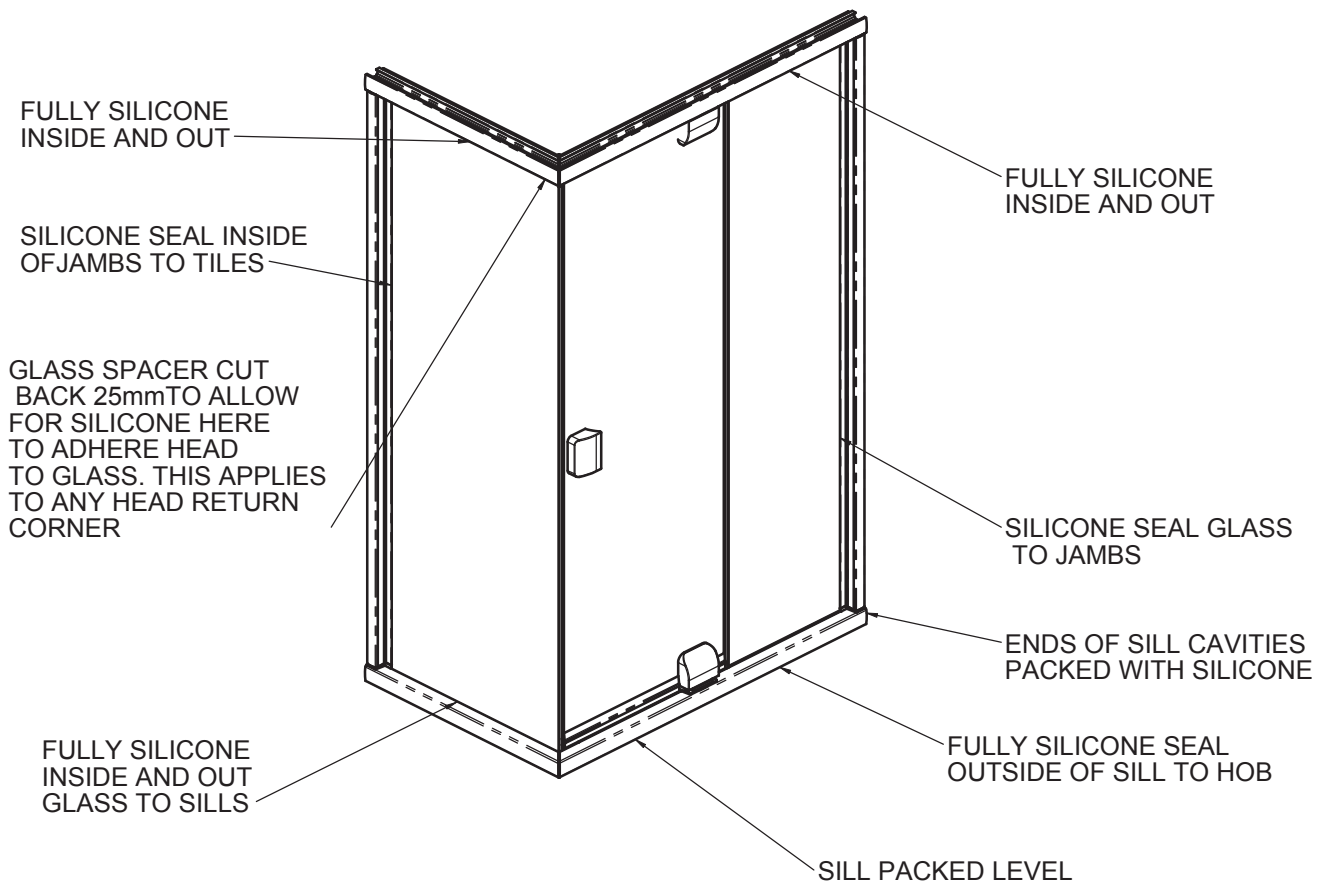
PRODUCT NO: NOOD 400  
DRAWING NO: NUDE-SS-02-11  
DRAWN: JCF

DATE: 30/03/11  
ISSUE: A  
SCALE: 1 : 2

## INSTALLATION PROCEDURE

### TYPICAL SILICONE SEALING OF NOOD SIGNATURE SHOWER SCREEN

RECOMMENDED SILICONE SEALANT  
DOW CORNING 680 SILICONE - SANITARY SEALANT  
WHICH IS A NEUTRAL CURE SILICONE SEALANT FORMULATED  
TO PREVENT MOULD AND MILDEW



FOR NOOD SIGNATURE SHOWER SCREENS WITH RETURNS USE SILICONE TO GLUE HEAD TO GLASS APPROXIMATELY 25mm BLOB.

PRODUCT NO: NOOD 400  
DRAWING NO: NUDE-SS-02-12  
DRAWN: JCF

DATE: 02/06/11  
ISSUE: A  
SCALE: -

 **SUNCOAST  
WINDOWS**  
Quality . Style . Innovation