

Commercial

Centre Pocket Frame (100mm)

Hinged Door (100mm-CP)

Pivot Door (100mm-CP)

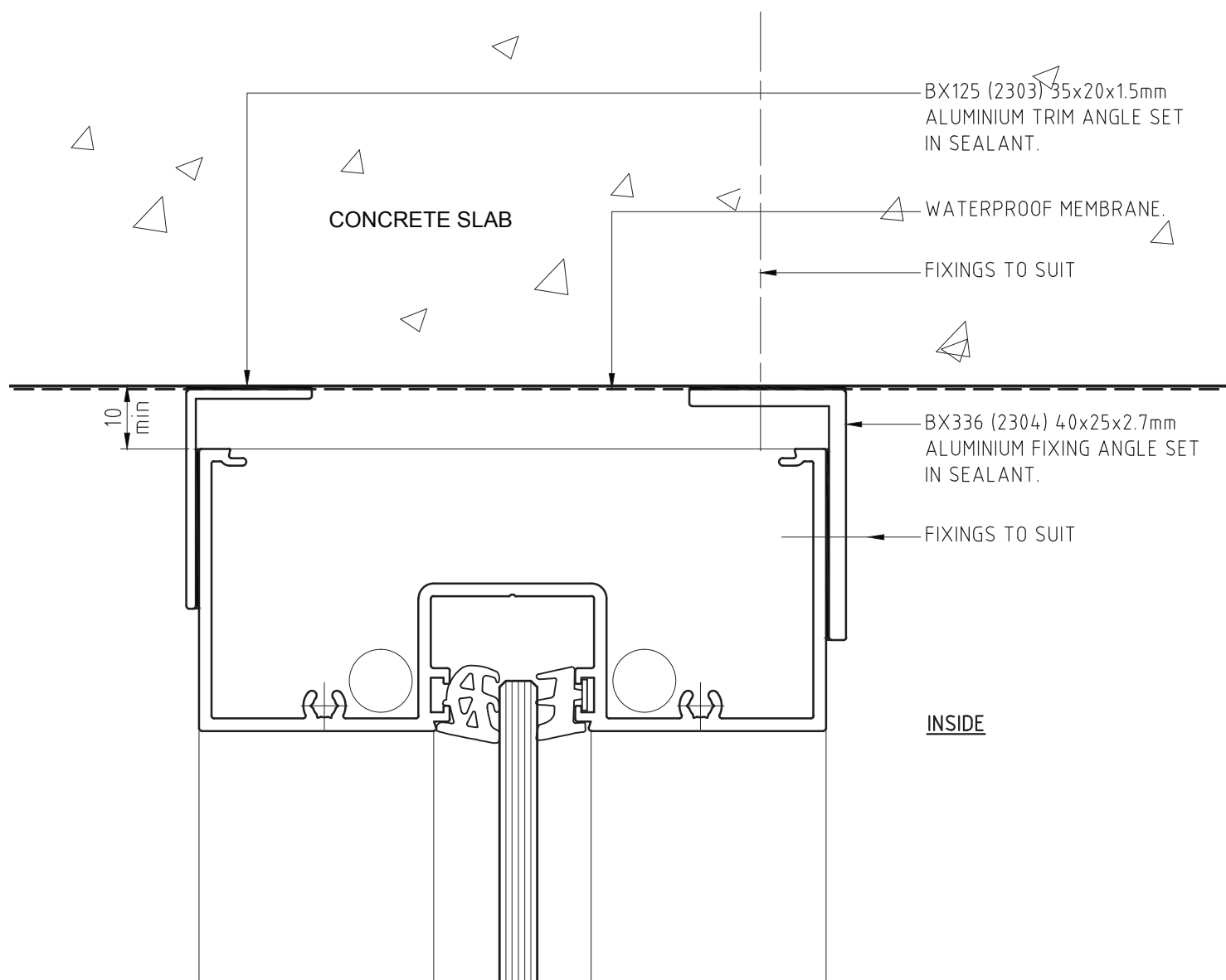
Installation Details



SUNCOAST
WINDOWS

Quality . Style . Innovation

HEAD DETAIL - CONCRETE SLAB



FIXINGS: TYPES & CENTRES TO BE PROJECT SPECIFIC. REFER TO SPECIFICATION &/OR COMPANY ENGINEER.

PRODUCT NO: COM Centre Pocket Frame (100mm) DATE: 14/02/13

DRAWING NO: EURE-05-01 ISSUE: B

DRAWN: DJH SCALE: 1:1

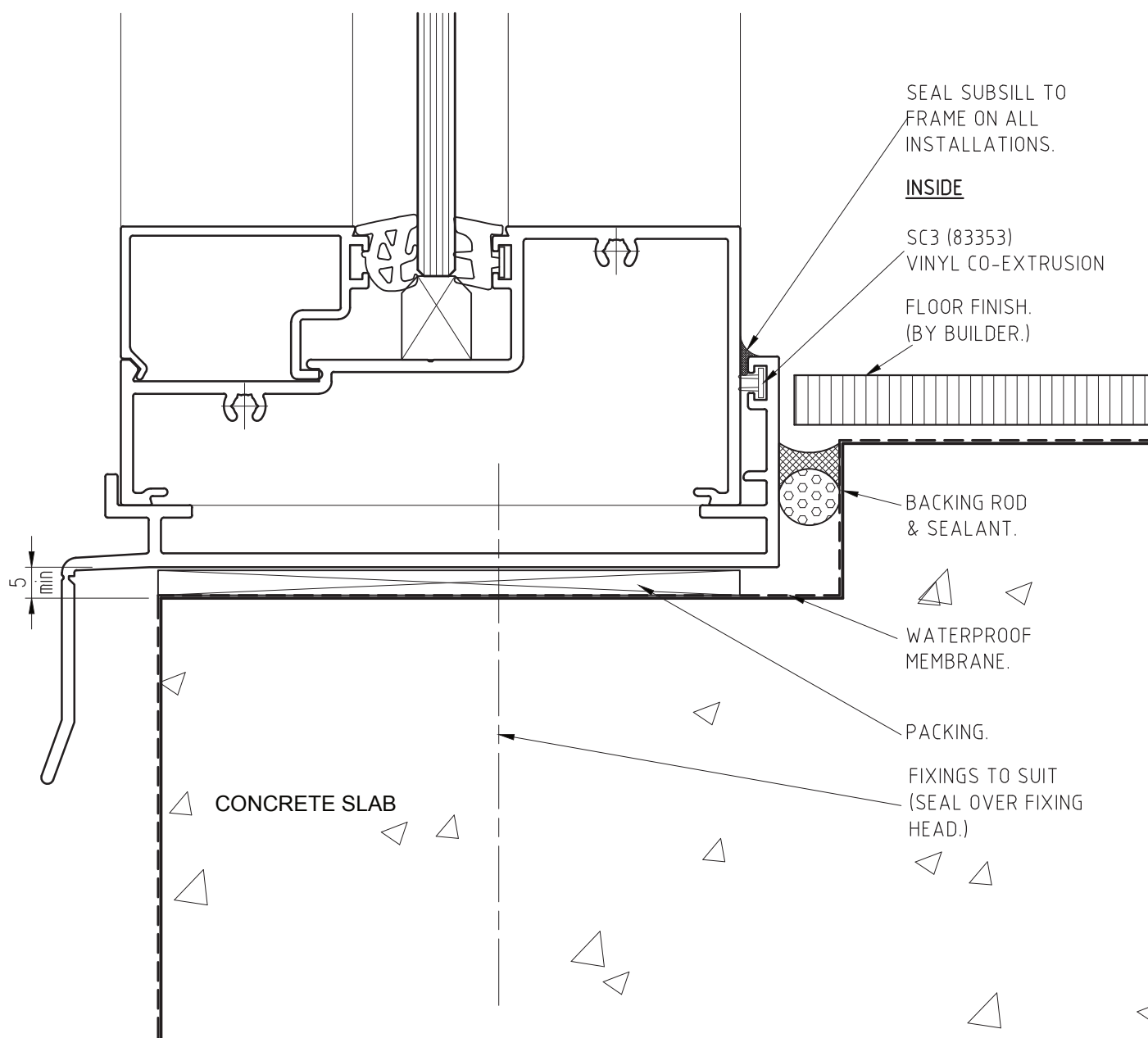
Suncoast Windows & Doors Pty Ltd ABN 78010409819 © 2013 All rights reserved



**SUNCOAST
WINDOWS**

Quality . Style . Innovation

SILL DETAIL - CONCRETE SLAB



FIXINGS: TYPES & CENTRES TO BE PROJECT SPECIFIC.
REFER TO SPECIFICATION &/OR COMPANY ENGINEER.

PRODUCT NO: COM Centre Pocket Frame (100mm) DATE: 14/02/13

DRAWING NO: EURE-05-02 ISSUE: C

DRAWN: DJH SCALE: 1:1

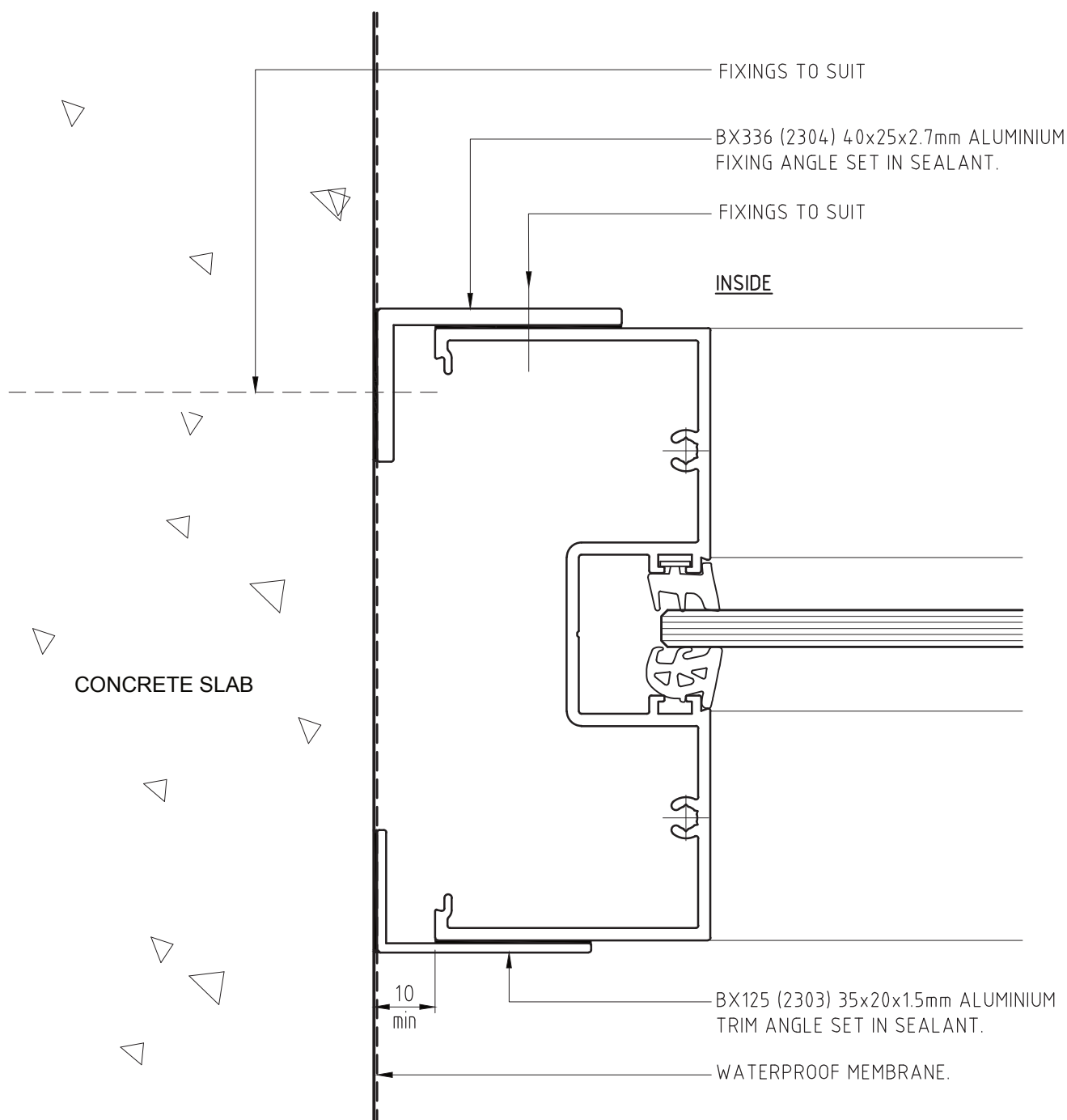
Suncoast Windows & Doors Pty Ltd ABN 78010409819 © 2013 All rights reserved



**SUNCOAST
WINDOWS**

Quality . Style . Innovation

JAMB DETAIL - CONCRETE SLAB



FIXINGS: TYPES & CENTRES TO BE PROJECT SPECIFIC. REFER TO SPECIFICATION &/OR COMPANY ENGINEER.

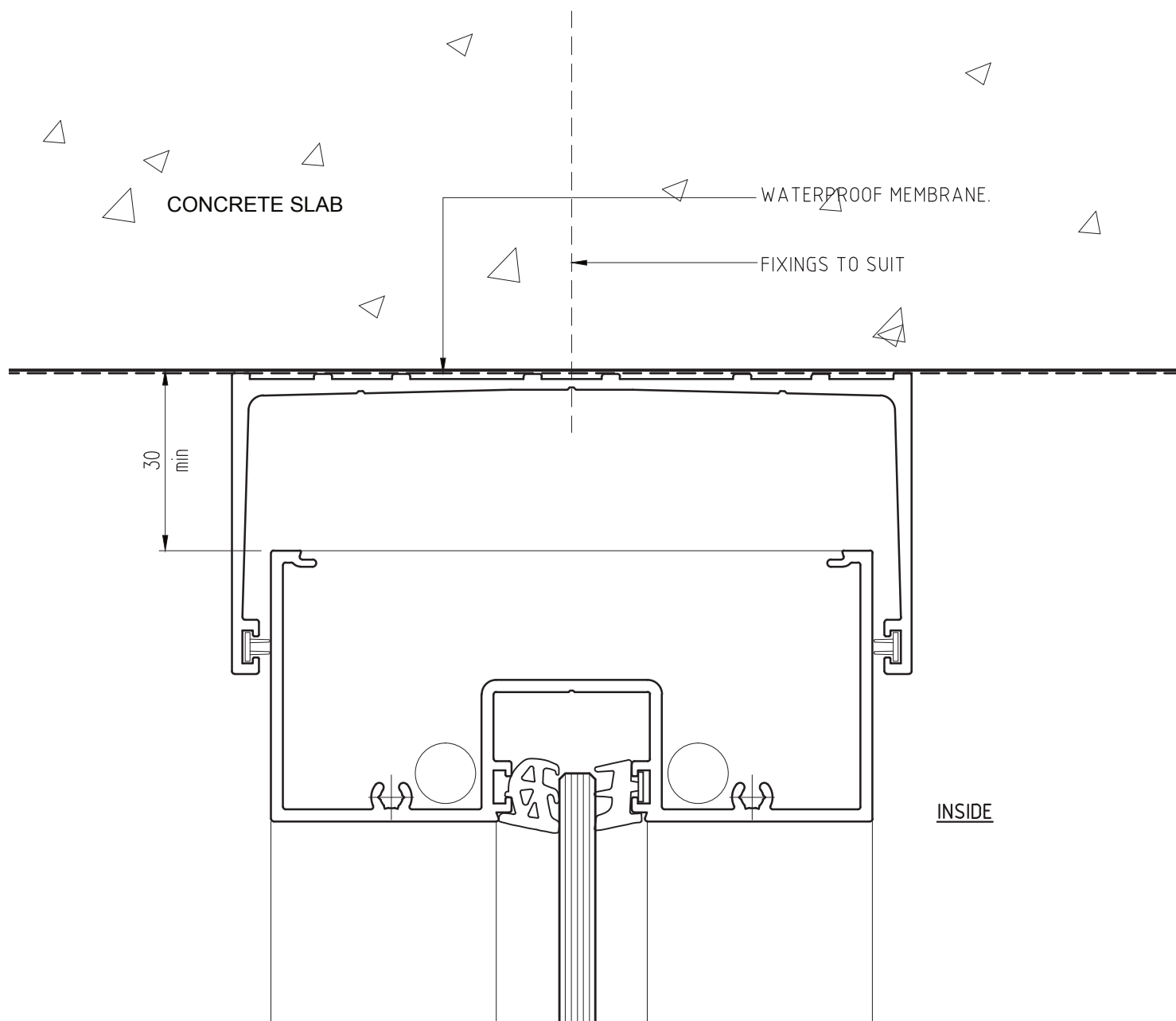
PRODUCT NO: COM Centre Pocket Frame (100mm) DATE: 14/02/13

DRAWING NO: EURE-05-03 ISSUE: B

DRAWN: DJH SCALE: 1:1

Suncoast Windows & Doors Pty Ltd ABN 78010409819 © 2013 All rights reserved

HEAD DETAIL WITH SUBHEAD - CONCRETE SLAB



FIXINGS: TYPES & CENTRES TO BE PROJECT SPECIFIC. REFER TO SPECIFICATION &/OR COMPANY ENGINEER.

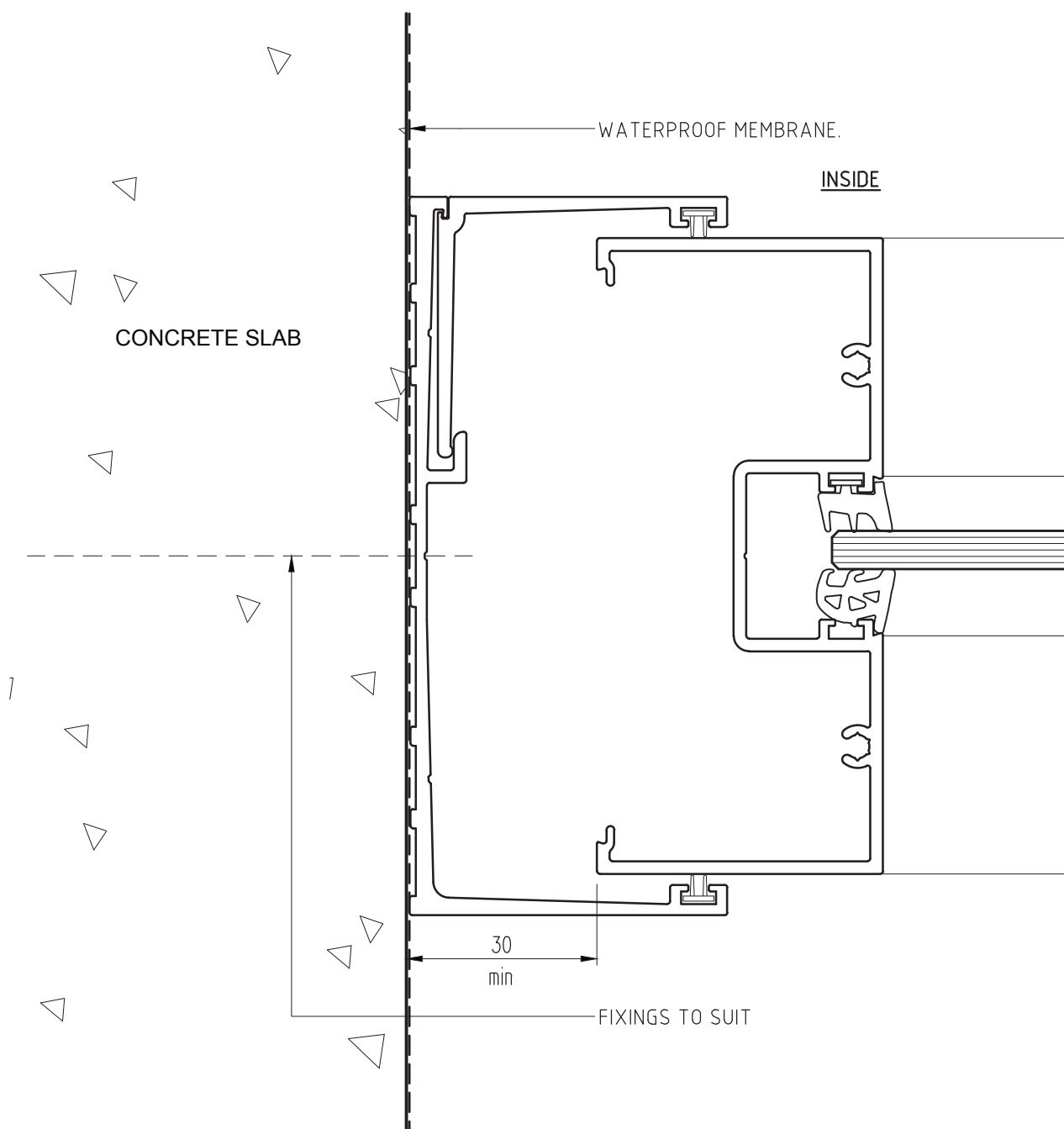
PRODUCT NO: COM Centre Pocket Frame (100mm) DATE: 14/02/13

DRAWING NO: EURE-05-04 ISSUE: B

DRAWN: DJH SCALE: 1:1

Suncoast Windows & Doors Pty Ltd ABN 78010409819 © 2013 All rights reserved

JAMB DETAIL WITH SUBJAMB - CONCRETE SLAB



FIXINGS: TYPES & CENTRES TO BE PROJECT SPECIFIC. REFER TO
SPECIFICATION &/OR COMPANY ENGINEER.

PRODUCT NO: COM Centre Pocket Frame (100mm) DATE: 14/02/13

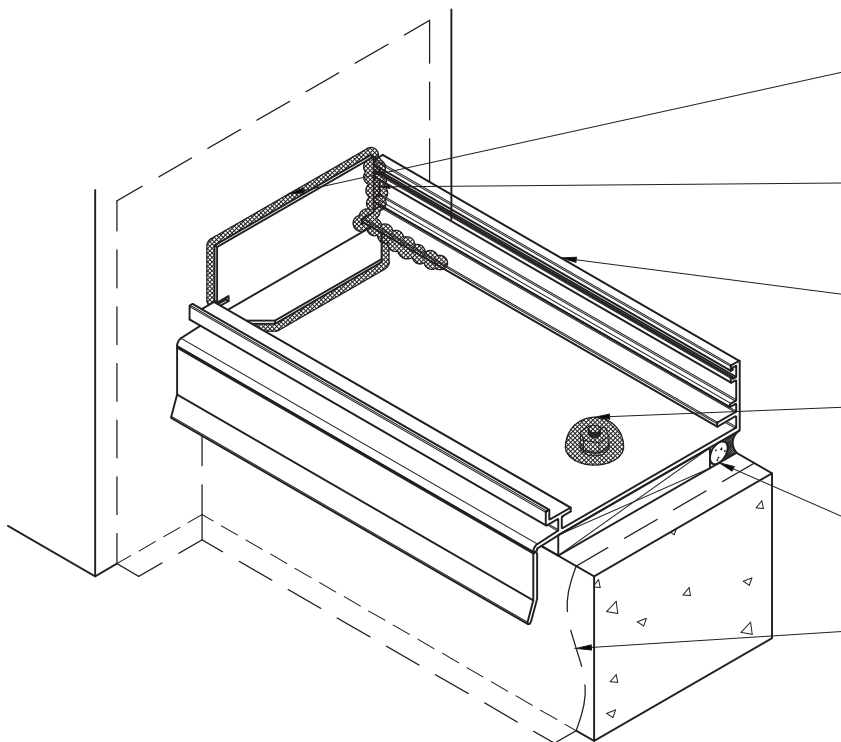
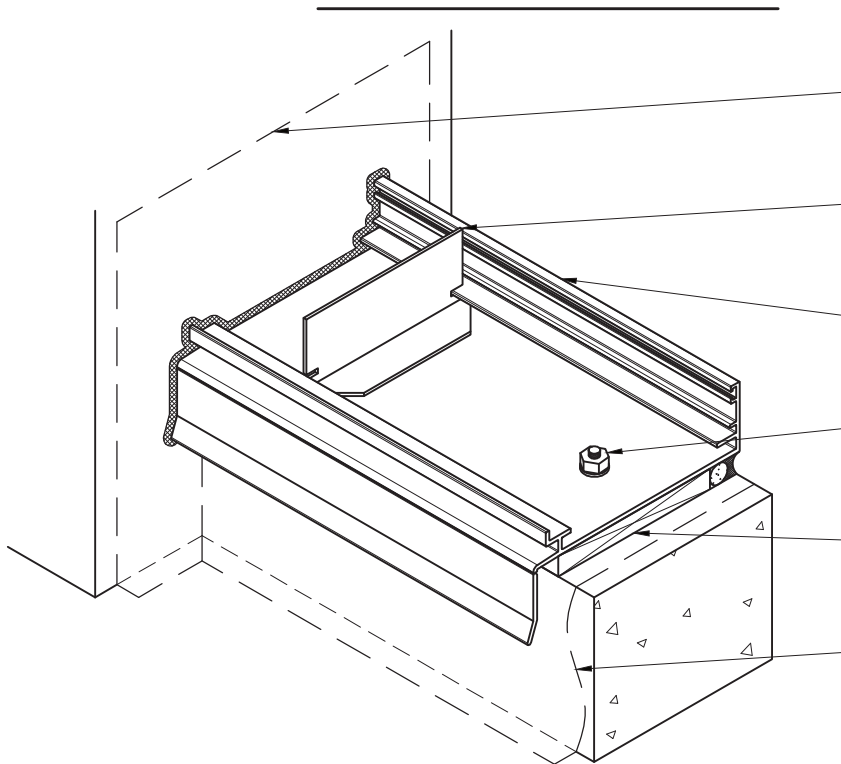
DRAWING NO: EURE-05-05 ISSUE: B

DRAWN: DJH SCALE: 1:1

Suncoast Windows & Doors Pty Ltd ABN 78010409819 © 2013 All rights reserved

Commercial Centre Pocket Frame (100mm) /
Hinged Door (100mm-CP) /
Pivot Door (100mm-CP) Installation Details

05-06



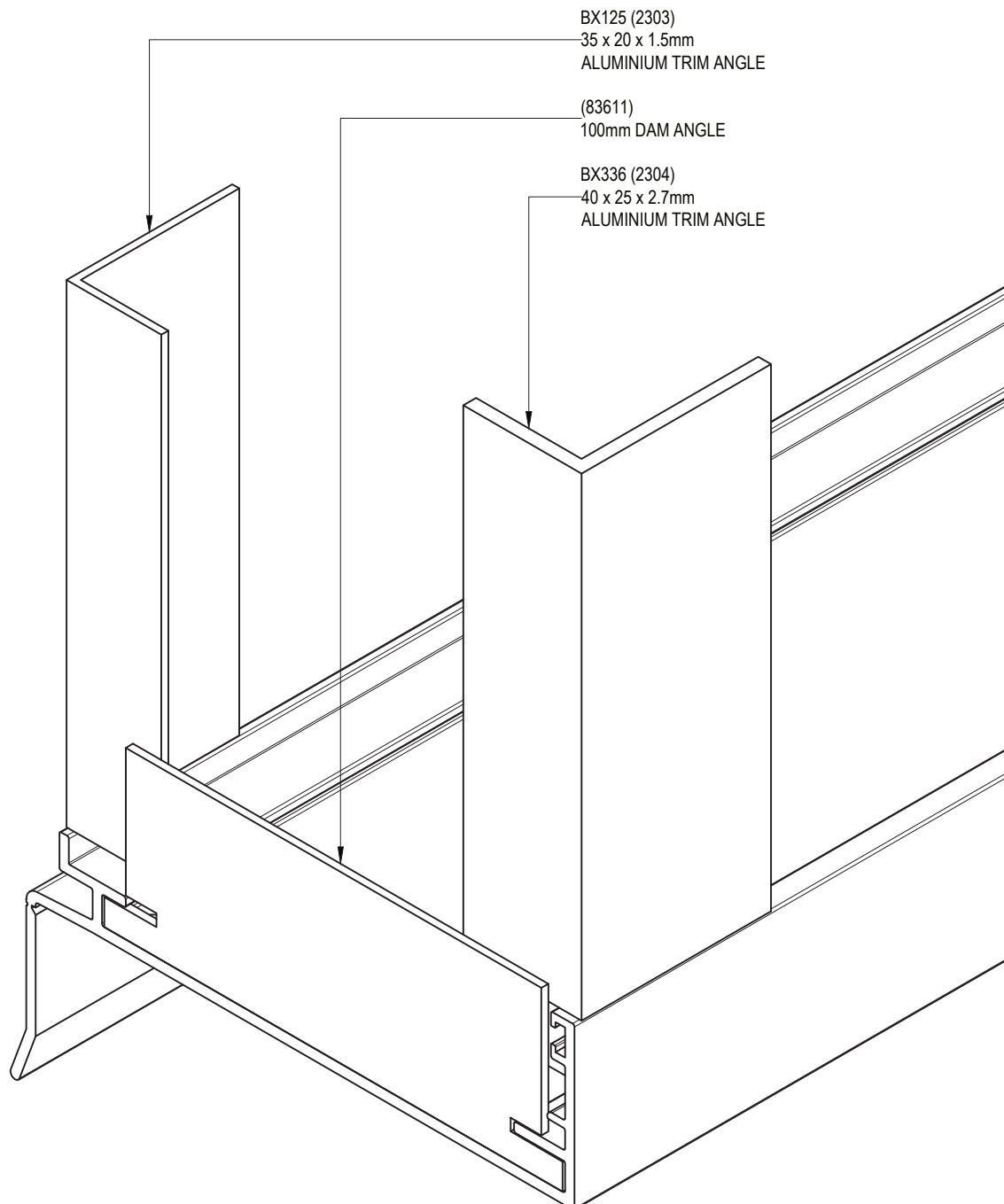
PRODUCT NO: COM Centre Pocket Frame (100mm) DATE: 14/02/13

DRAWING NO: EURE-05-06 ISSUE: C

DRAWN: DJH SCALE: 1:3

Suncoast Windows & Doors Pty Ltd ABN 78010409819 © 2013 All rights reserved

DAM ANGLE WITH FIXING AND TRIM ANGLES



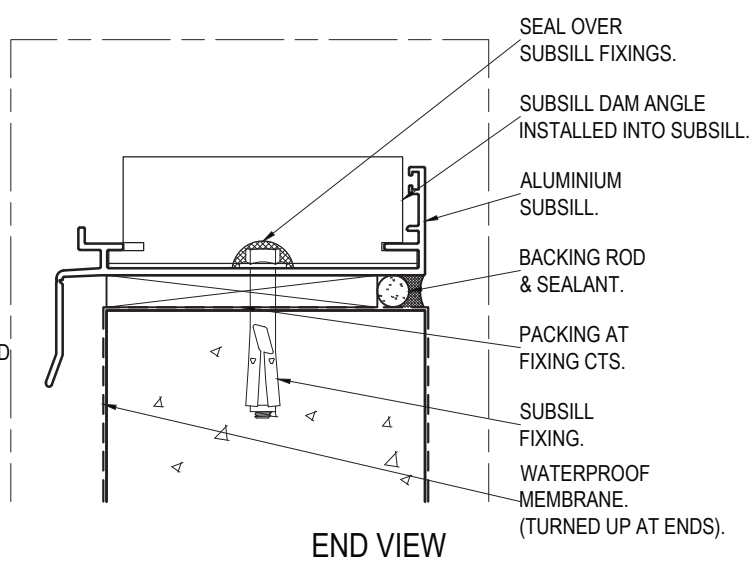
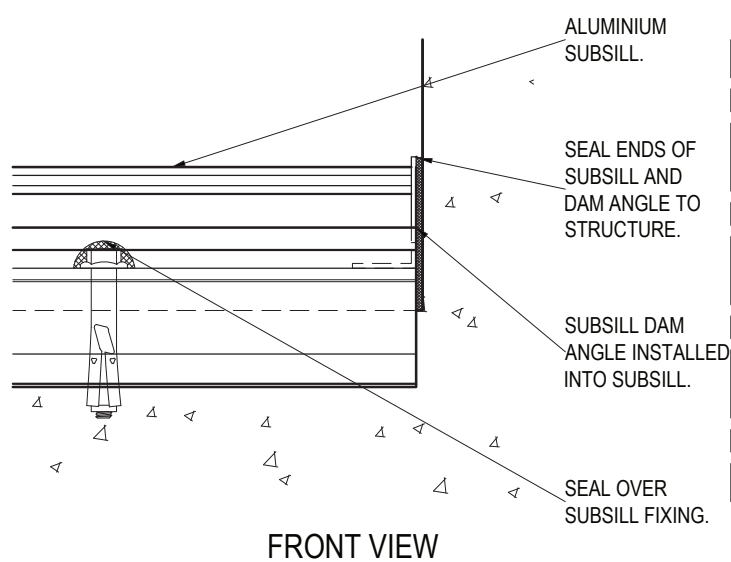
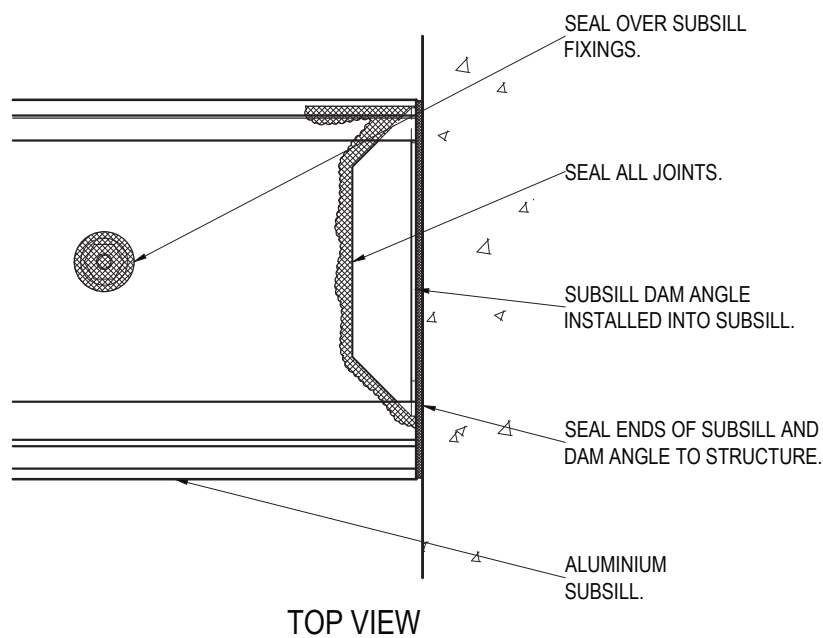
PRODUCT NO: COM Centre Pocket Frame (100mm) DATE: 14/02/13

DRAWING NO: EURE-05-07 ISSUE: C

DRAWN: DJH SCALE: 1:1

Suncoast Windows & Doors Pty Ltd ABN 78010409819 © 2013 All rights reserved

DAM ANGLE - PLAN VIEWS



PRODUCT NO: COM Centre Pocket Frame (100mm) DATE: 14/02/13

DRAWING NO: EURE-05-08

ISSUE: C

DRAWN: DJH

SCALE: NTS

Suncoast Windows & Doors Pty Ltd ABN 78010409819 © 2013 All rights reserved

82028 180° SPLICE PLATE AT SUBSILL JOIN

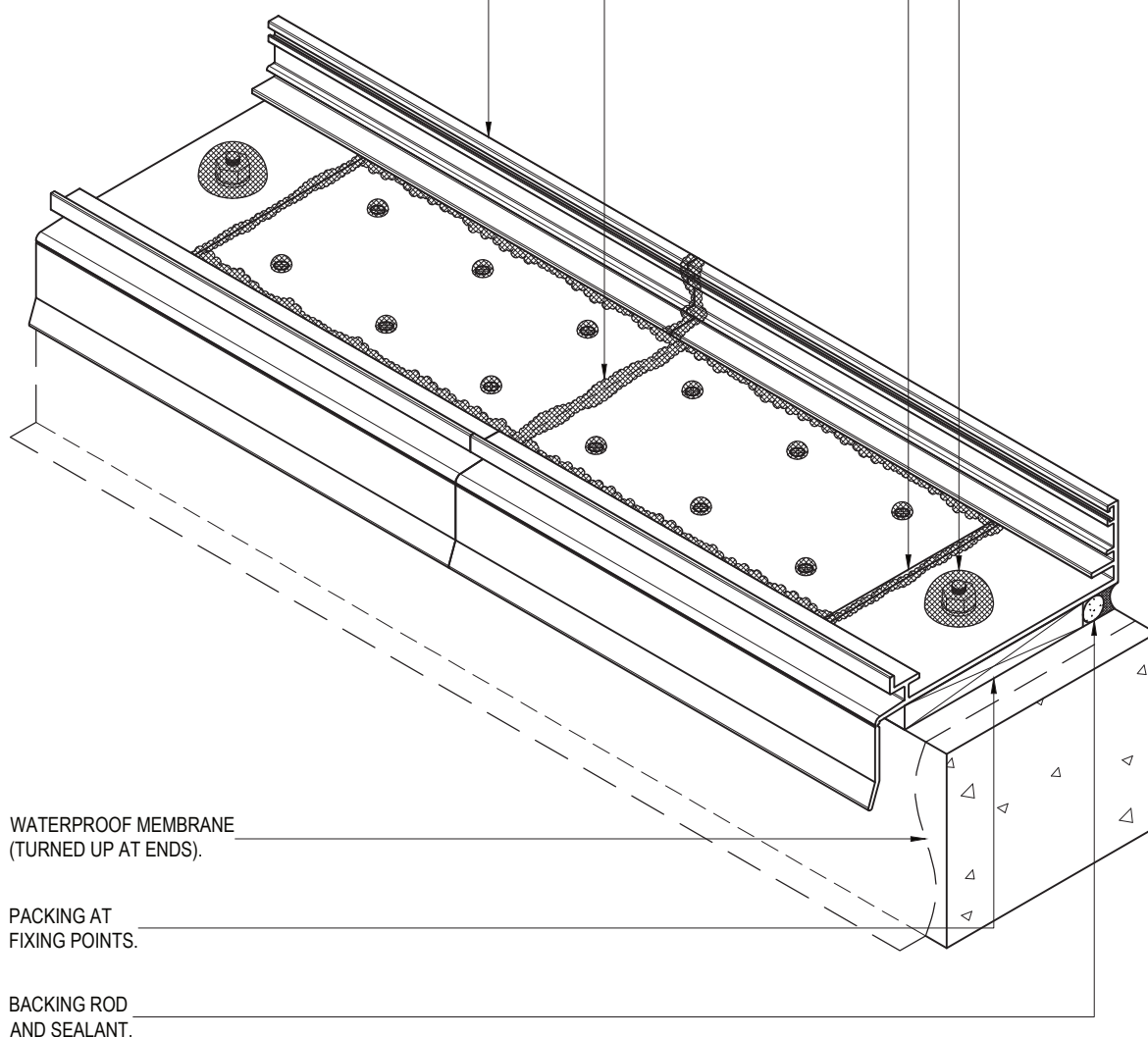
INSTALL SUBSILL INTO OPENING WITH SPLICE PLATE FITTED. PACK SUBSILL LEVEL, THEN
FIX TO STRUCTURE. POSITION CENTRE OF SPLICE PLATE ALONG JOIN IN SUBSILL, AND FIX
TO SUBSILL WITH 12x CSK SCREWS. SEAL ALL JOINTS BETWEEN PLATE AND SUBSILL, AND
ALONG JOIN IN SUBSILL. SEAL OVER FIXINGS AND UNDER SUBSILL TO STRUCTURE.

SUBSILL FIXING.
(SEAL OVER FIXINGS)

82028
96 x 300 x 3mm 180° SPLICE PLATE
FIXED WITH 12 x CSK SCREWS.

SEAL ALL JOINTS.

ALUMINIUM SUBSILL.



PRODUCT NO: _____ DATE: _____

DRAWING NO: _____ ISSUE: _____

DRAWN: _____ SCALE: _____

Suncoast Windows & Doors Pty Ltd ABN 78010409819 © 2013 All rights reserved

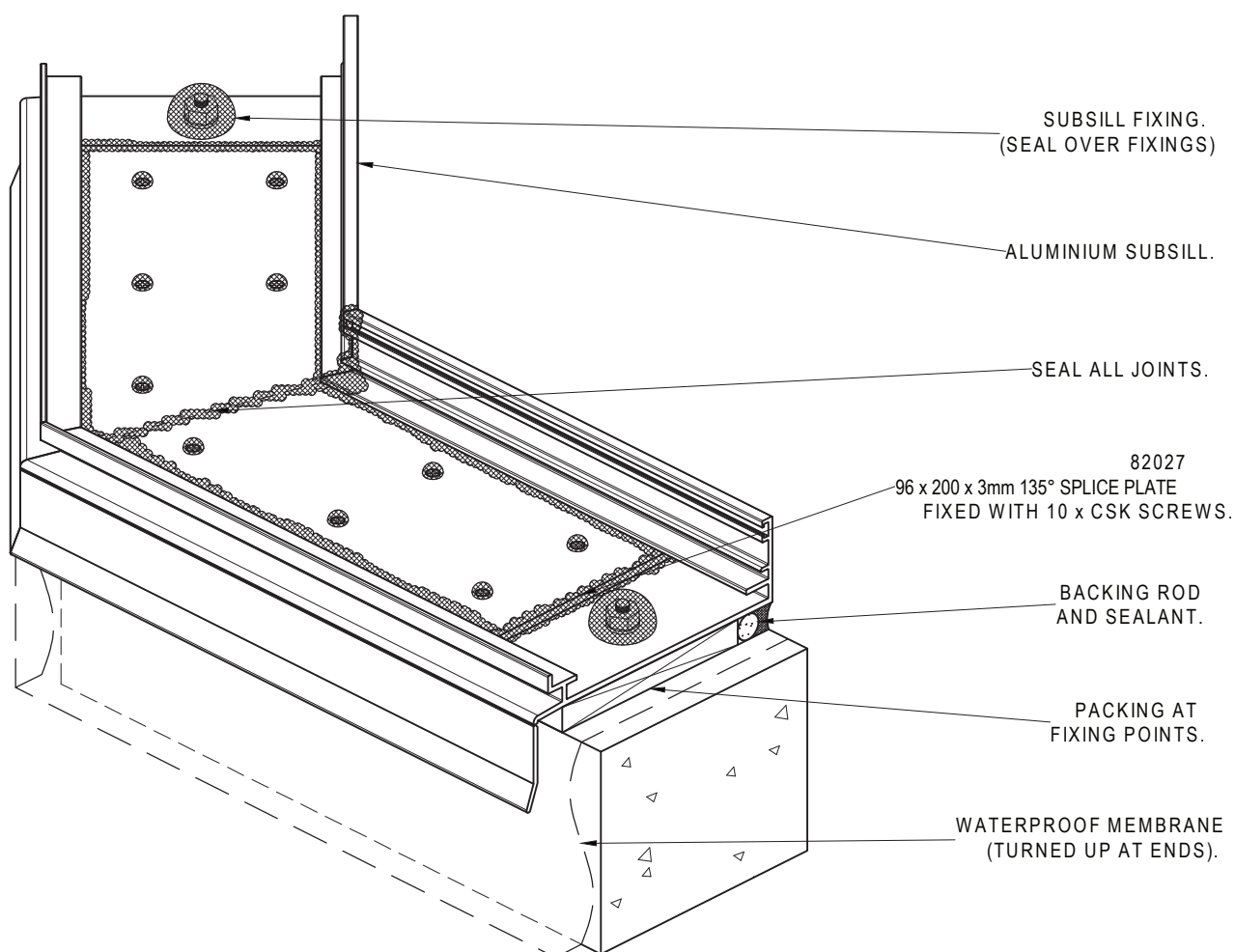


SUNCOAST
WINDOWS

Quality . Style . Innovation

82027 135° SPLICE PLATE AT SUBSILL JOIN

INSTALL SUBSILL INTO OPENING WITH SPLICE PLATE FITTED. PACK SUBSILL LEVEL, THEN FIX TO STRUCTURE. POSITION CENTRE OF SPLICE PLATE ALONG JOIN IN SUBSILL, AND FIX TO SUBSILL WITH 10x CSK SCREWS. SEAL ALL JOINTS BETWEEN PLATE AND SUBSILL, AND ALONG JOIN IN SUBSILL. SEAL OVER FIXINGS AND UNDER SUBSILL TO STRUCTURE.



PRODUCT NO: COM Centre Pocket Frame (100mm) DATE: 14/02/13

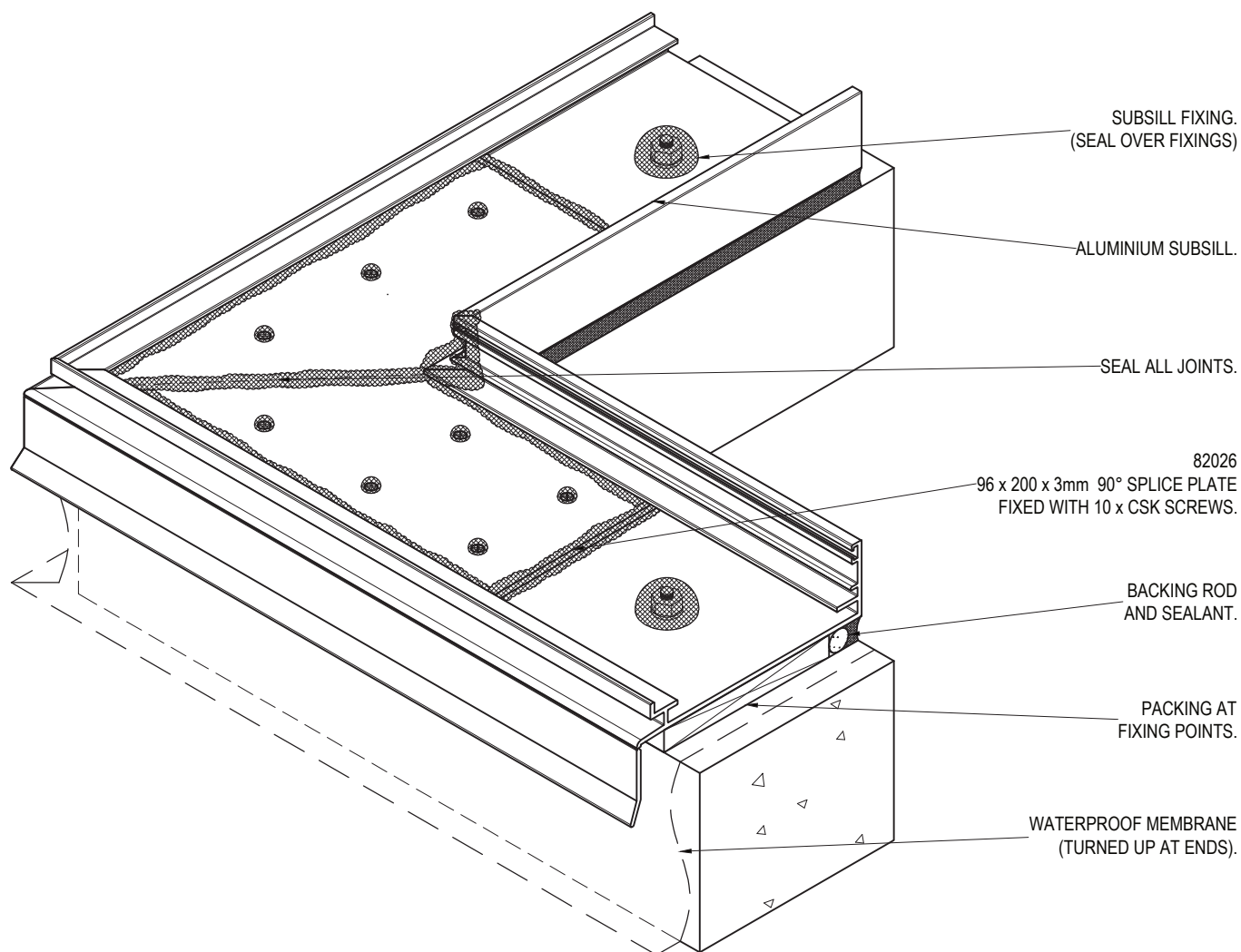
DRAWING NO: EURE-05-10 ISSUE: C

DRAWN: DJH SCALE: 1:2.5

Suncoast Windows & Doors Pty Ltd ABN 78010409819 © 2013 All rights reserved

82026 90° SPLICE PLATE AT SUBSILL JOIN

INSTALL SUBSILL INTO OPENING WITH SPLICE PLATE FITTED. PACK SUBSILL LEVEL, THEN
FIX TO STRUCTURE. POSITION CENTRE OF SPLICE PLATE ALONG JOIN IN SUBSILL, AND FIX
TO SUBSILL WITH 10x CSK SCREWS. SEAL ALL JOINTS BETWEEN PLATE AND SUBSILL, AND
ALONG JOIN IN SUBSILL. SEAL OVER FIXINGS AND UNDER SUBSILL TO STRUCTURE.



PRODUCT NO: COM Centre Pocket Frame (100mm) DATE: 14/02/13

DRAWING NO: EURE-05-11 ISSUE: C

DRAWN: DJH SCALE: 1:2.5

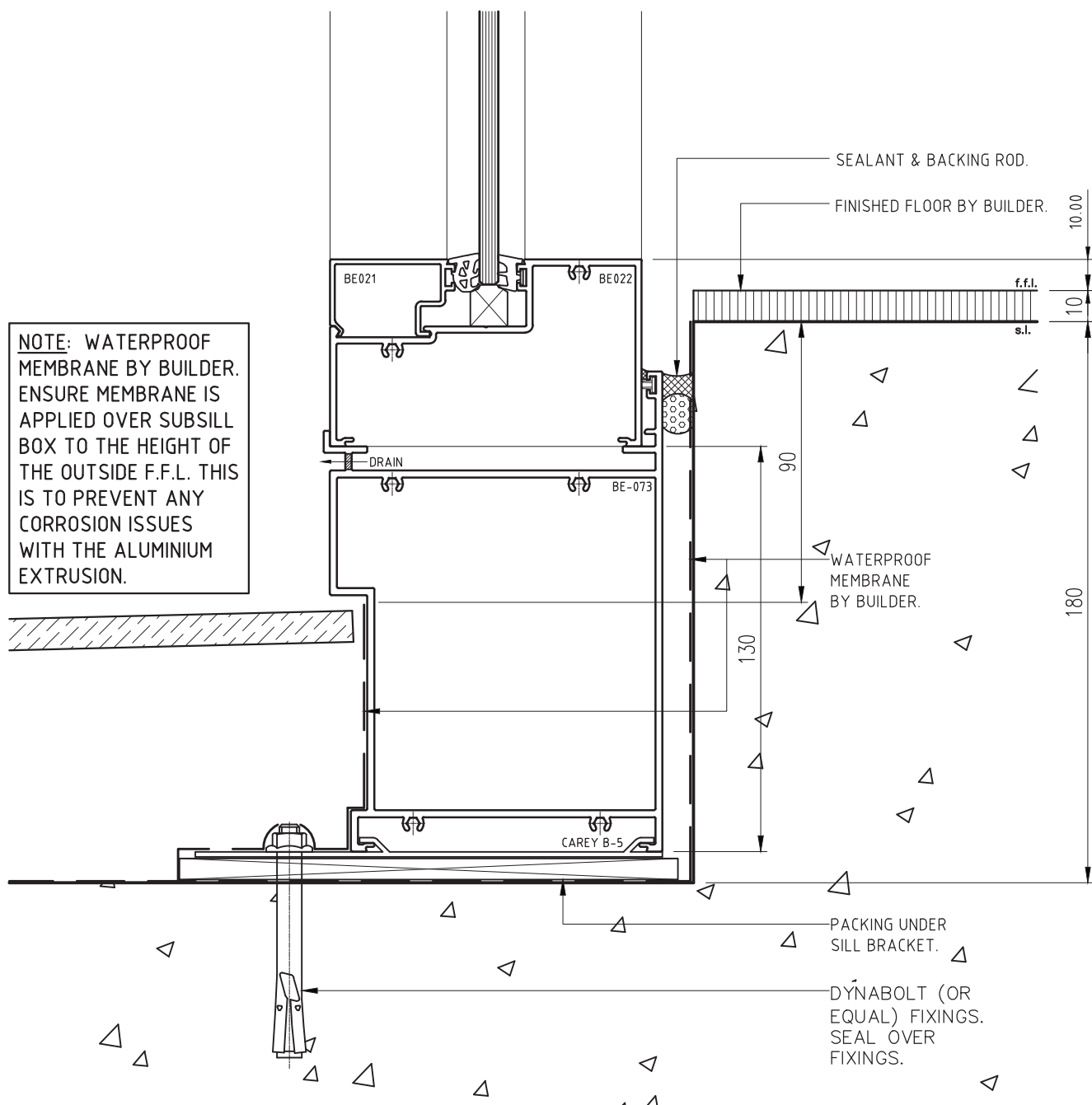
Suncoast Windows & Doors Pty Ltd ABN 78010409819 © 2013 All rights reserved



**SUNCOAST
WINDOWS**

Quality . Style . Innovation

ALTERNATIVE SILL DETAIL - USING BE073 BOX SUBSILL



PRODUCT NO: COM Centre Pocket Frame (100mm) DATE: 14/02/13

DRAWING NO: EURE-05-12 ISSUE: B

DRAWN: DJH SCALE: 1:2

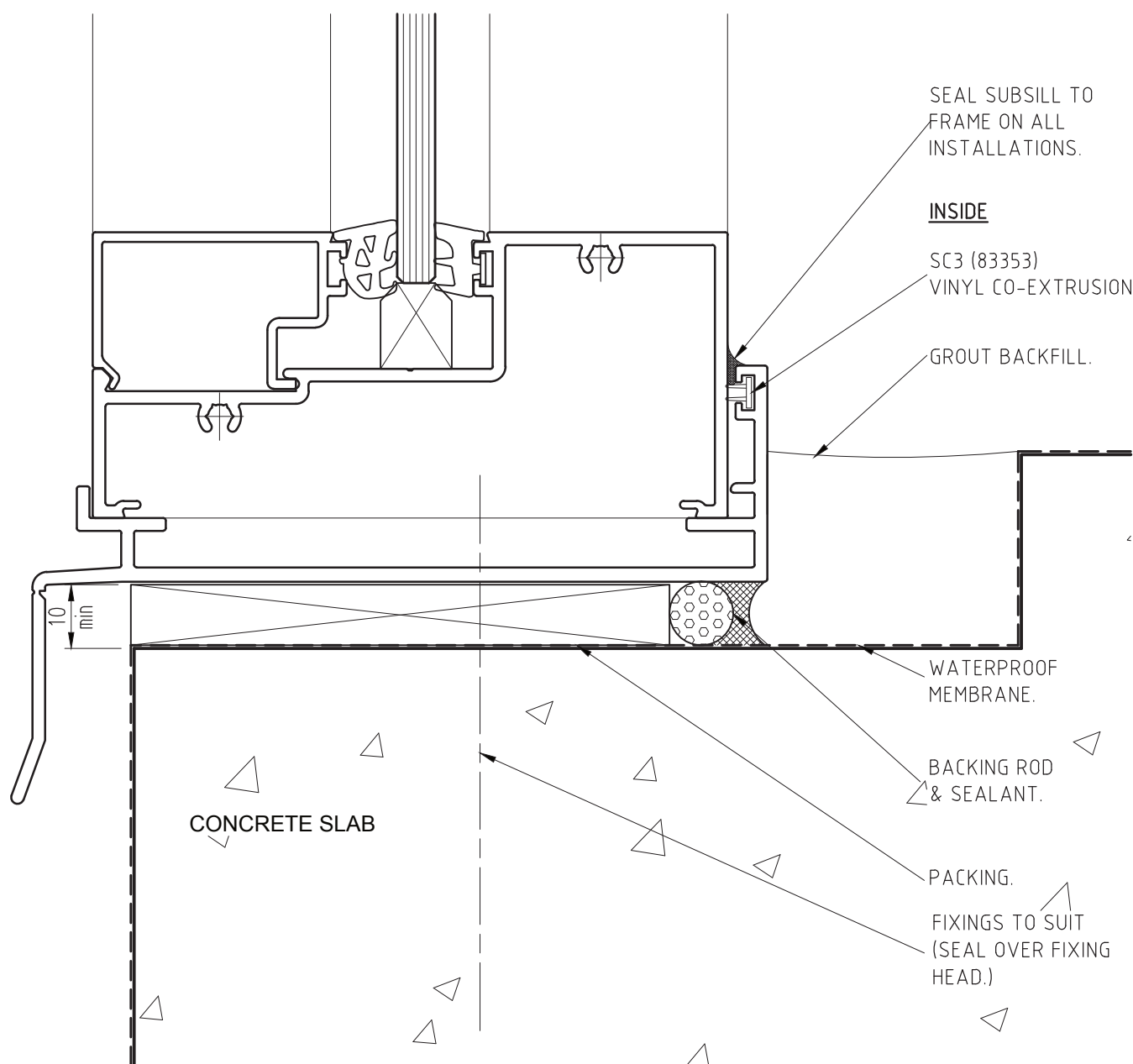
Suncoast Windows & Doors Pty Ltd ABN 78010409819 © 2013 All rights reserved



**SUNCOAST
WINDOWS**

Quality . Style . Innovation

ALTERNATE SILL DETAIL - CONCRETE SLAB
(WHEN REBATE IS SUBSTANTIALLY WIDER THAN SUBSILL)



FIXINGS: TYPES & CENTRES TO BE PROJECT SPECIFIC.
REFER TO SPECIFICATION &/OR COMPANY ENGINEER.

PRODUCT NO: COM Centre Pocket Frame (100mm) DATE: 14/02/13

DRAWING NO: EURE-05-13 ISSUE: B

DRAWN: DJH SCALE: 1:1

Suncoast Windows & Doors Pty Ltd ABN 78010409819 © 2013 All rights reserved



SUNCOAST
WINDOWS

Quality . Style . Innovation